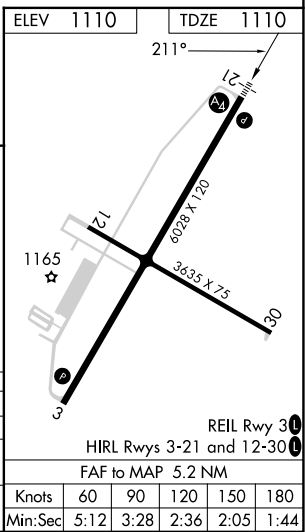
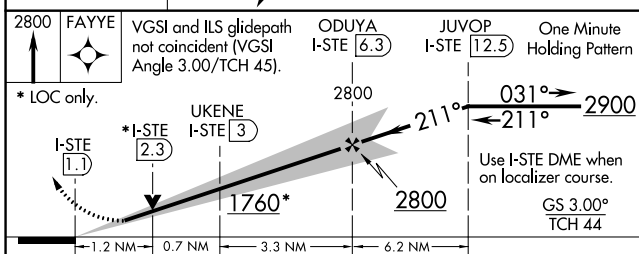
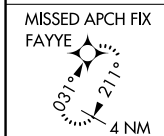
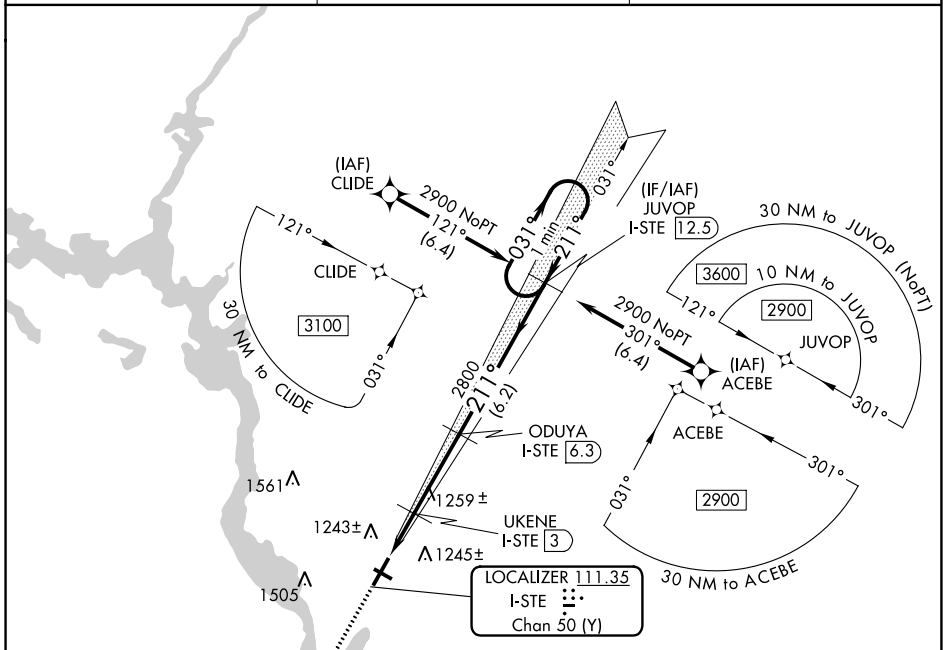


LOC/DME I-STE	APP CRS	Rwy Idg	6028
111.35	211°	TDZE	1110
Chan 50(Y)		Apt Elev	1110

ILS or LOC RWY 21

STEVENS POINT MUNI (STE)

RNP APCH - GPS.		MALS	MISSED APPROACH: Climb to 2800 direct FAYYE and hold.
<p>▼ DME required. For inop ALS, increase S-LOC 21 Cat C/D visibility to 1 1/8 SM. Inop table does not apply to S-ILS 21 all Cats.</p> <p>▲ NA</p>		A4	
AWOS-3 119.275	MINNEAPOLIS CENTER 124.4 317.7	UNICOM 122.7 (CTAF) 0	



CATEGORY	A	B	C	D
S-ILS 21	1360-3/4 250 (300-3/4)			
S-LOC 21	1520-3/4 410 (500-3/4)		1520-1 410 (500-1)	
C CIRCLING	1580-1 470 (500-1)	1600-1 490 (500-1)	1860-2 1/4 750 (800-2 1/4)	1860-2 1/2 750 (800-2 1/2)

Knots	60	90	120	150	180
Min:Sec	5:12	3:28	2:36	2:05	1:44

EC-3, 25 JAN 2024 to 22 FEB 2024

EC-3, 25 JAN 2024 to 22 FEB 2024