

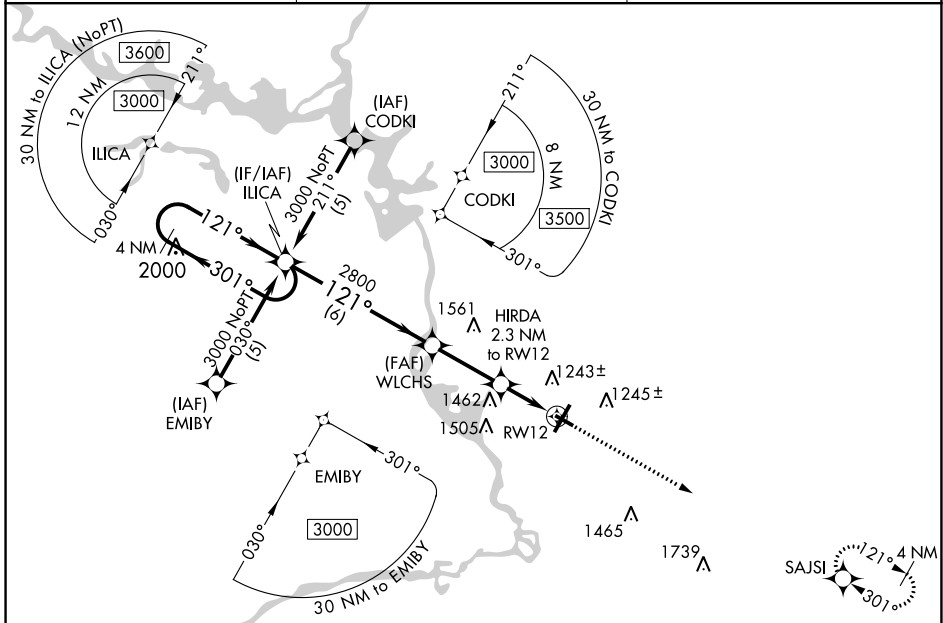
APP CRS	Rwy Idg	<b>3635</b>
<b>121°</b>	TDZE	<b>1108</b>
	Apt Elev	<b>1110</b>

# RNAV (GPS) RWY 12

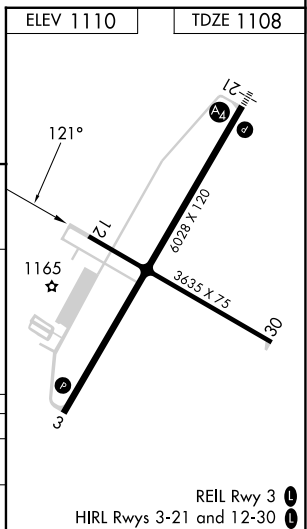
STEVENS POINT MUNI (STE)

RNP APCH - GPS.		MISSED APPROACH: Climb to 3000 direct SAJSI and hold.
<p><b>⚠</b> Rwy 12 helicopter visibility reduction below <math>\frac{3}{4}</math> SM NA. When local altimeter not received, use Mosinee altimeter setting and increase all MDA 60 feet, increase LNAV Cat C and D visibility <math>\frac{1}{8}</math> SM. VDP NA when using Mosinee altimeter setting.</p>		

AWOS-3 <b>119.275</b>	MINNEAPOLIS CENTER <b>124.4 317.7</b>	UNICOM <b>122.7 (CTAF) 0</b>
--------------------------	--	---------------------------------



4 NM Holding Pattern		ILLICA		WLCHS		HIRDA 2.3 NM to RWY 12		3000	SAJSI
3000		301°		121°		3.05° TCH 40		1.9 NM to RWY 12	
6 NM		2.8 NM		0.4		1.9		RWY 12	
CATEGORY	A	B	C	D					
LNAV MDA	1760-1	652 (700-1)	1760- $\frac{1}{8}$	652 (700- $\frac{1}{8}$ )					
CIRCLING	1760-1	650 (700-1)	1860- $\frac{1}{4}$ 750 (800- $\frac{1}{4}$ )	1860- $\frac{1}{2}$ 750 (800- $\frac{1}{2}$ )					



EC-3, 25 JAN 2024 to 22 FEB 2024

EC-3, 25 JAN 2024 to 22 FEB 2024