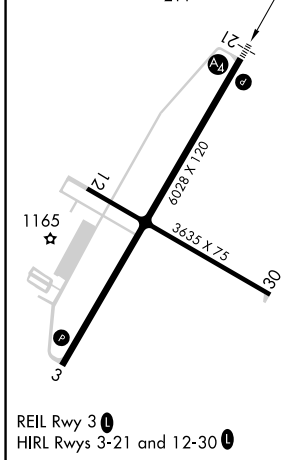
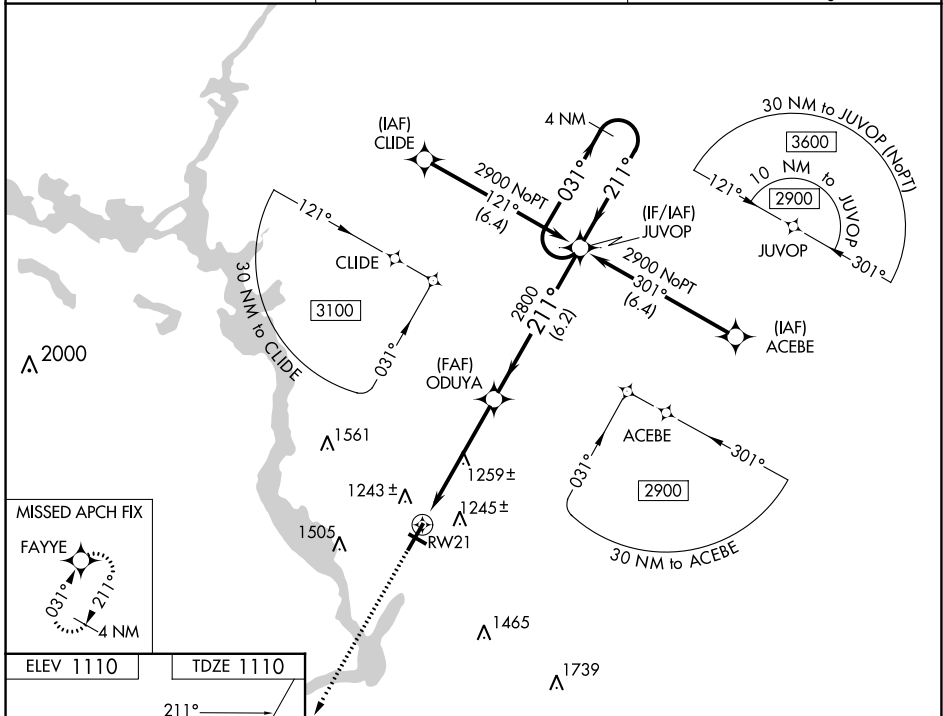


WAAS CH <b>86511</b> <b>W21A</b>	APP CRS <b>211°</b>	Rwy Idg TDZE Apt Elev	<b>6028</b> <b>1110</b> <b>1110</b>
--	------------------------	-----------------------------	---

# RNAV (GPS) RWY 21

STEVENS POINT MUNI (STE)

RNP APCH - GPS.		MALS	MISSED APPROACH: Climb to 2800 direct FAYYE and hold.
AWOS-3 <b>119.275</b>		MINNEAPOLIS CENTER <b>124.4 317.7</b>	UNICOM <b>122.7 (CTAF)</b>



2800 FAYYE VGSI and RNAV glidepath not coincident (VGSI Angle 3.00/TCH 45). 4 NM Holding Pattern

\*LNAV only

1.2 NM to RWY 21

ODUYA 2800

JUVOP 2900

GP 3.00° TCH 44

CATEGORY	A	B	C	D
LPV DA		1360- <sup>3</sup> / <sub>4</sub>	250 (300- <sup>3</sup> / <sub>4</sub> )	
LNAV/VNAV DA		1457- <sup>3</sup> / <sub>4</sub>	347 (400- <sup>3</sup> / <sub>4</sub> )	
LNAV MDA	1520- <sup>3</sup> / <sub>4</sub>	410 (500- <sup>3</sup> / <sub>4</sub> )	1520-1	410 (500-1)
<b>C</b> CIRCLING	1580-1 470 (500-1)	1600-1 490 (500-1)	1860-2 <sup>1</sup> / <sub>4</sub> 750 (800-2 <sup>1</sup> / <sub>4</sub> )	1860-2 <sup>1</sup> / <sub>2</sub> 750 (800-2 <sup>1</sup> / <sub>2</sub> )

EC-3, 25 JAN 2024 to 22 FEB 2024

EC-3, 25 JAN 2024 to 22 FEB 2024