


| | | | |
|---------------------------------|------------------------|-----------------------------|---|
| WAAS CH 40329 W30A | APP CRS 300° | Rwy Idg TDZE Apt Elev | 5199 656 656 |
|---------------------------------|------------------------|-----------------------------|---|

RNAV (GPS) RWY 30

WINONA MUNI-MAX CONRAD FIELD (ON A)

⚠ For uncompensated Baro-VNAV systems, LNAV/VNAV NA below -16°C (4°F) or above 54°C (130°F). DME/DME RNP-0.3 NA. When local altimeter setting not received, use La Crosse altimeter setting and increase all LPV DA to 1064 feet and visibility 1/8 mile all Cats, all LNAV/VNAV DA to 1193 and visibility 1/8 mile all Cats, and all MDA 60 feet, increase LNAV Cat C/D and Circling Cat B visibility 1/4 mile. For inop ALS, increase LPV all Cats visibility to 1 1/8 mile. For inop ALS when using La Crosse altimeter setting, increase LPV all Cats visibility to 1 3/8 mile, and LNAV Cats C/D visibility to 2 mile. Baro-VNAV and VDP NA when using La Crosse altimeter setting.

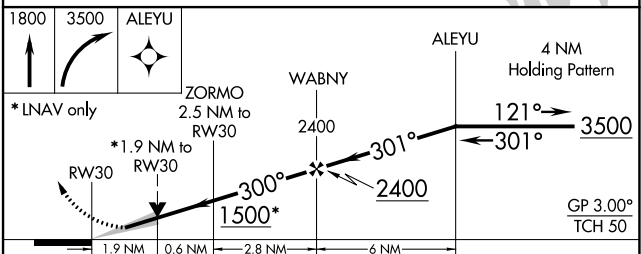
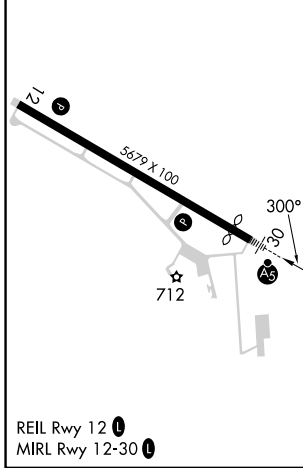
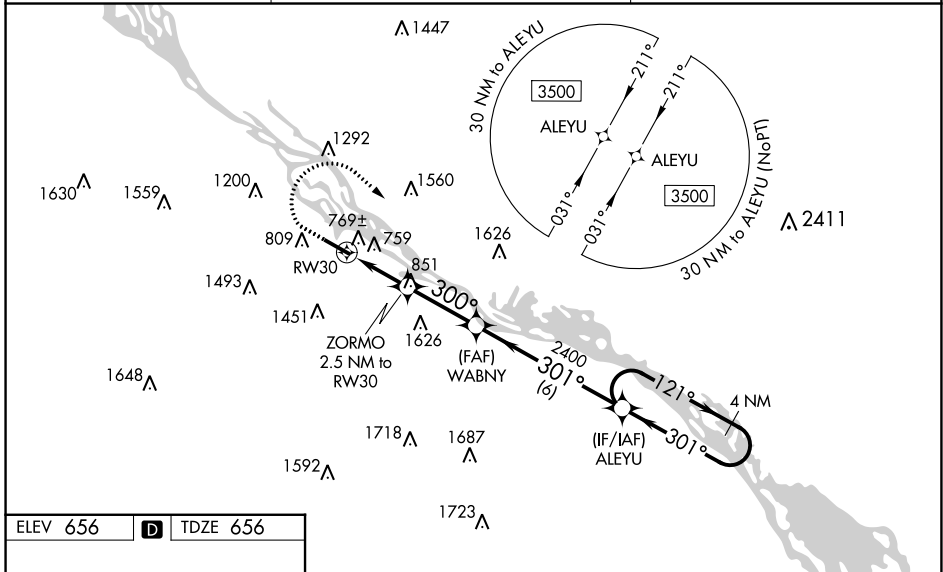
MALSR


MISSED APPROACH:
 Climb to 1800 then climbing right turn to 3500 direct ALEYU and hold.

AWOS-3
118.075

MINNEAPOLIS CENTER
128.6 363.0

UNICOM
122.8 (CTAF) 0



| CATEGORY | A | B | C | D |
|-------------------|----------------------------|----------------------------|-------------------------|-------------------------|
| LPV DA | | 1011-3/4 | 355 (400-3/4) | |
| LNAV/VNAV DA | | 1140-1/8 | 484 (500-1/8) | |
| LNAV MDA | 1280-1/2 | 624 (700-1/2) | 1280-1/8 | 624 (700-1/8) |
| C CIRCLING | 1560-1/4 904 (1000-1/4) | 1600-1/4 944 (1000-1/4) | 1780-3 1124 (1200-3) | 1980-3 1324 (1400-3) |

NC-1, 25 JAN 2024 to 22 FEB 2024

NC-1, 25 JAN 2024 to 22 FEB 2024