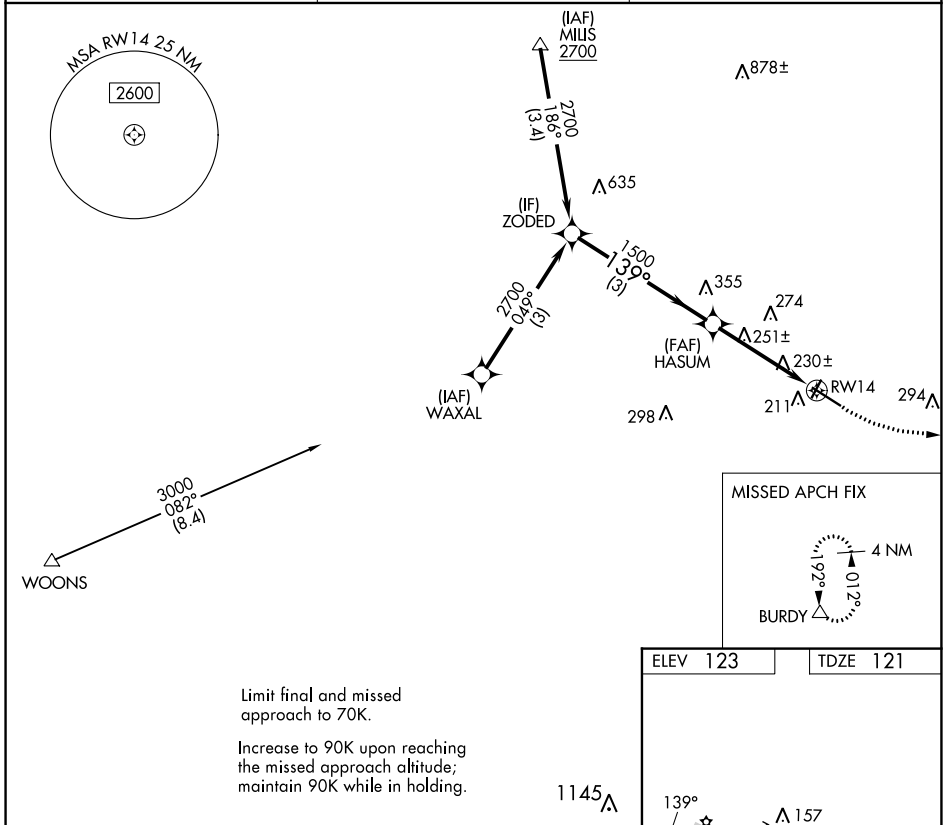


WAAS CH 50444 W14B	APP CRS 139°	Rwy Idg TDZE 121 Apt Elev 123	2991
--	------------------------	---	-------------

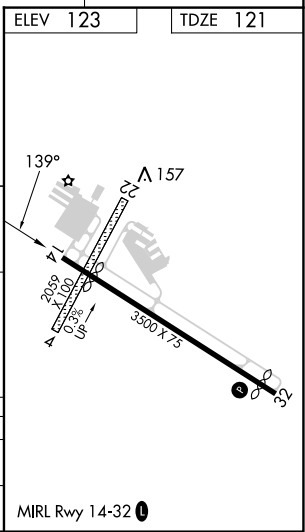
COPTER RNAV (GPS) Y RWY 14

MANSFIELD MUNI (1B9)

RNP APCH - GPS.		MISSED APPROACH: Climbing left turn to 2000 direct BURDY and hold.
Procedure NA at night. Use Taunton altimeter setting.		
TAN ASOS 132.675	BOSTON APP CON 124.1	UNICOM 123.0 (CTAF)



ZODED		2000	BURDY
2700	139°	HASUM	1500
		5.70°	TCH 40
	3 NM		2.2 NM
2700	COPTER		
LP	MDA	520-1	399 (400-1)
LNAV	MDA	580-1	459 (500-1)



NE-1, 25 JAN 2024 to 22 FEB 2024

NE-1, 25 JAN 2024 to 22 FEB 2024