

WAAS CH <b>99441</b> <b>W22A</b>	APP CRS <b>223°</b>	Rwy Idg TDZE Apt Elev	<b>7003</b> <b>2302</b> <b>2302</b>
--	------------------------	-----------------------------	---

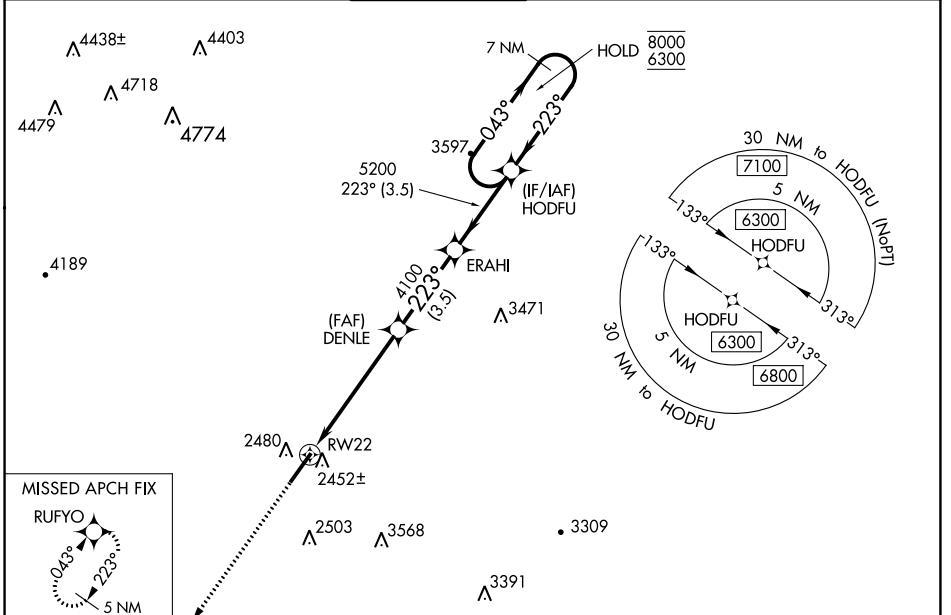
# RNAV (GPS) RWY 22

GREENBRIER VALLEY (LWB)

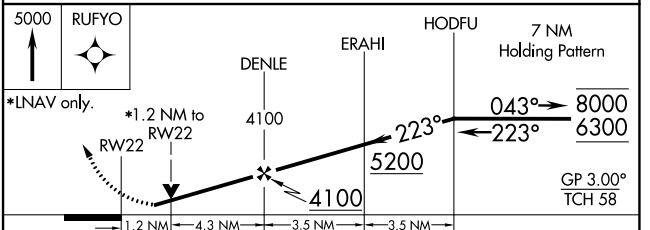
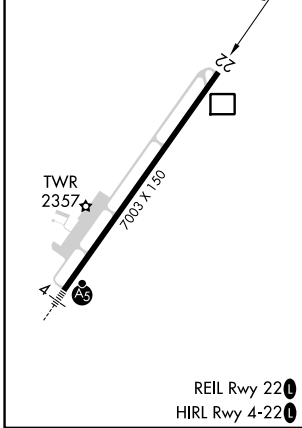
RNP APCH. MISSED APPROACH: Climb to 5000 direct RUFYO and hold.

Rwy 22 helicopter visibility reduction below 3/4 SM NA. For uncompensated Baro-VNAV systems, LNAV/VNAV NA below -19°C or above 52°C.

ATIS* <b>121.4</b>	WASHINGTON CENTER <b>134.4 353.9</b>	LEWISBURG TOWER* <b>118.9 (CTAF) 0</b>	GND CON <b>121.9</b>	CLNC DEL <b>125.725</b> (When twr closed)	UNICOM <b>122.95</b>
-----------------------	---	---	-------------------------	---	-------------------------



ELEV 2302		TDZE 2302
-----------	--	-----------



CATEGORY	A	B	C	D
LPV DA		2614-7/8	312 (400-7/8)	
LNAV/VNAV DA		2723-1/4	421 (500-1/4)	
LNAV MDA	2720-1	418 (500-1)	2720-1/8	418 (500-1/8)
CIRCLING	2840-1 538 (600-1)	3040-1 738 (800-1)	3280-3 978 (1000-3)	3580-3 1278 (1300-3)

NE-4, 25 JAN 2024 to 22 FEB 2024

NE-4, 25 JAN 2024 to 22 FEB 2024