

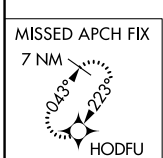
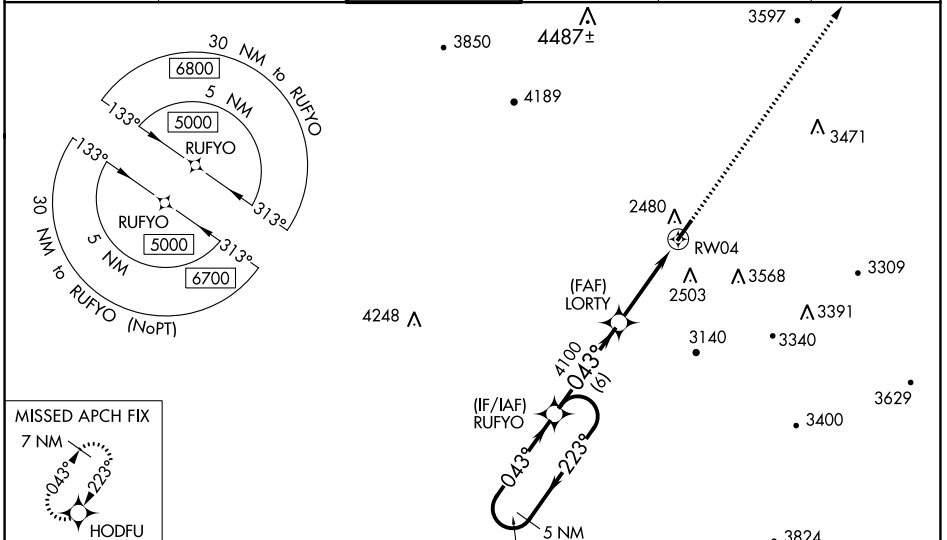
WAAS CH <b>42613</b> <b>W04A</b>	APP CRS <b>043°</b>	Rwy Idg TDZE Apt Elev	<b>7003</b> <b>2288</b> <b>2302</b>
--	------------------------	-----------------------------	---

# RNAV (GPS) RWY 4

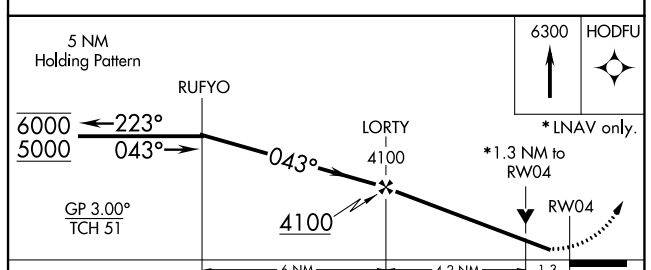
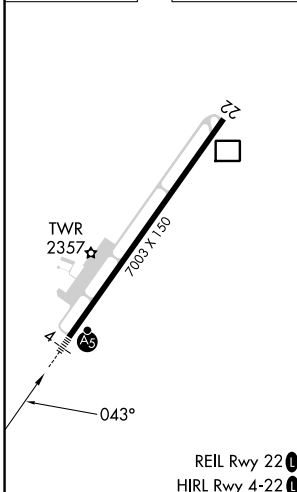
GREENBRIER VALLEY (LWB)

RNP APCH.		MALSR	MISSED APPROACH: Climb to 6300 direct HODFU and hold, continue climb-in-hold to 6300.
	Rwy 4 helicopter visibility reduction below 3/4 NA. For uncompensated Baro-VNAV systems, LNAV/VNAV NA below -19°C or above 54°C. For inop ALS, increase LNAV Cats A/B visibilities to 1 SM, Cats C/D to 1/2 SM, and increase LPV all Cats visibilities to 7/8 SM.		

ATIS* <b>121.4</b>	WASHINGTON CENTER <b>134.4 353.9</b>	LEWISBURG TOWER* <b>118.9 (CTAF) 0</b>	GND CON <b>121.9</b>	CLNC DEL <b>125.725</b> (When twr closed)	UNICOM <b>122.95</b>
-----------------------	---	---	-------------------------	---	-------------------------



ELEV 2302	<b>D</b>	TDZE 2288
-----------	----------	-----------



CATEGORY	A	B	C	D
LPV DA		2559-3/4	271 (300-3/4)	
LNAV/VNAV DA		2738-7/8	450 (500-7/8)	
LNAV MDA	2760-3/4	472 (500-3/4)	2760-1	472 (500-1)
<input checked="" type="checkbox"/> CIRCLING	2840-1 538 (600-1)	3040-1 738 (800-1)	3280-3 978 (1000-3)	3680-3 1378 (1400-3)

NE-4, 25 JAN 2024 to 22 FEB 2024

NE-4, 25 JAN 2024 to 22 FEB 2024