

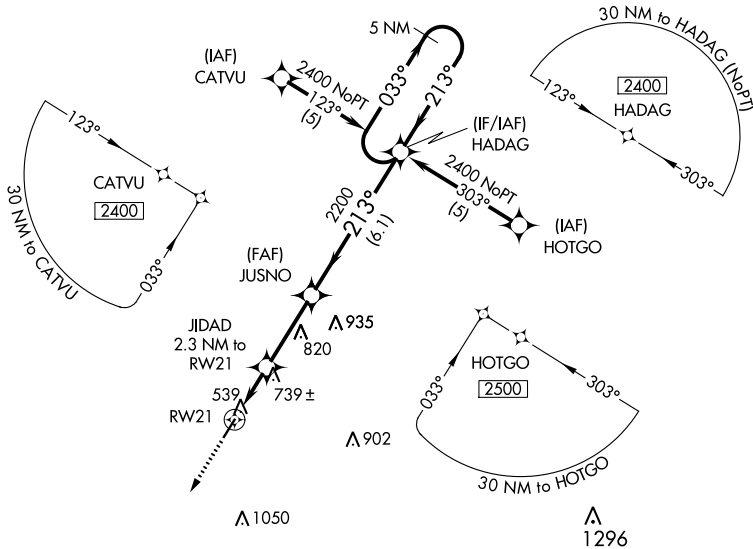
APP CRS	Rwy Idg 4400
213°	TDZE 467
	Apt Elev 467

RNAV (GPS) RWY 21

RIPLEY (25M)

RNP APCH.		MISSED APPROACH: Climb to 2500 direct CEDAS and hold.
▼	Use Corinth altimeter setting; when not received, use Tupelo altimeter setting and increase all MDA 40 feet, and increase LNAV Cat C visibility 1/4 mile.	
▲ NA	Procedure NA at night. Rwy 21 helicopter visibility reduction below 1 SM NA.	

CRX AWOS-3PT 118.675	MEMPHIS CENTER 135.9 260.6	UNICOM 122.8 (CTAF) 0
--------------------------------	--------------------------------------	---------------------------------



SC-4, 25 JAN 2024 to 22 FEB 2024

SC-4, 25 JAN 2024 to 22 FEB 2024

ELEV 467		TDZE 467	
CEDAS		213° to RWY 21	
2500	↑	5 NM Holding Pattern	
VGSIs and descent angles not coincident. (VGSIs Angle 3.50/TCH 16)		HADAG 033° → 2400 ← 213°	
JIDAD 2.3 NM to RWY 21 TCH 40 ≤ 3.04°		JUSNO 2200 6.1 NM	
RWY 21		4400 X 75	
2.3 NM		2.9 NM	
CATEGORY	A	B	C
LNAV MDA	1060-1	593 (600-1)	1060-1½ 593 (600-1½)
			D
			NA

MIRL Rwy 3-21 0