

RIPLEY, MISSISSIPPI

AL-6339 (FAA)

21252

VORTAC HLI 112.4 Chan 71	APP CRS 094°	Rwy Idg TDZE Apt Elev 467	N/A N/A 467
--	------------------------	---	--

VOR/DME-A RIPLEY (25M)

▼ Use Corinth altimeter setting; when not received, use Tupelo altimeter setting and increase all MDAs 40 feet, and visibility Cat C ¼ SM.
▲ NA Procedure NA at night. Helicopter visibility reduction below 1 SM NA.

MISSED APPROACH: Climbing left turn to 3000 via heading 251° and HLI VORTAC R-094 to HLI VORTAC R-094 and hold.

CRX AWOS-3PT 118.675	MEMPHIS CENTER 135.9 260.6	UNICOM 122.8 (CTAF) 0
--------------------------------	--------------------------------------	---------------------------------

Procedure NA for arrivals on HLI VORTAC
airway radials 045 CW 112.

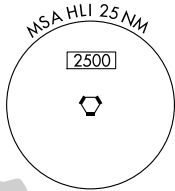
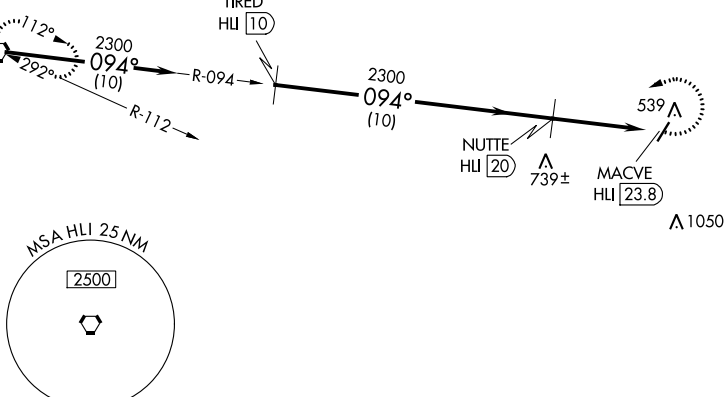
IAF
HOLLY SPRINGS
112.4 HLI
Chan 71

(IF)
TIRED
HLI 10

▲ 935

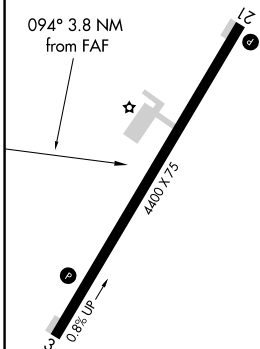
▲ 902

▲ 1050



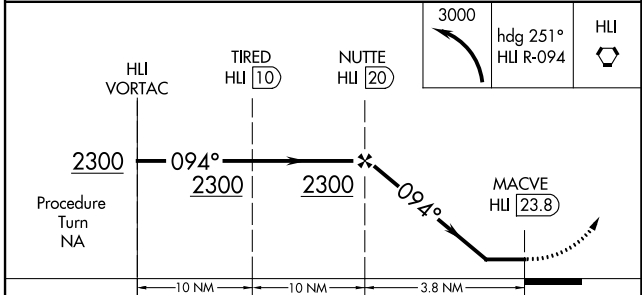
ELEV 467

094° 3.8 NM
from FAF



1126
▲

3000	hdg 251° HLI R-094	HLI
------	-----------------------	-----



CATEGORY	A	B	C	D
CIRCLING	1060-1 593 (600-1)	1100-1¼ 633 (700-1¼)	1120-1¾ 653 (700-1¾)	1420-3 953 (1000-3)

RIPLEY, MISSISSIPPI
Amdt 2B 09SEP21

34°43'N-89°01'W

RIPLEY (25M) VOR/DME-A

SC-4, 25 JAN 2024 to 22 FEB 2024

SC-4, 25 JAN 2024 to 22 FEB 2024