

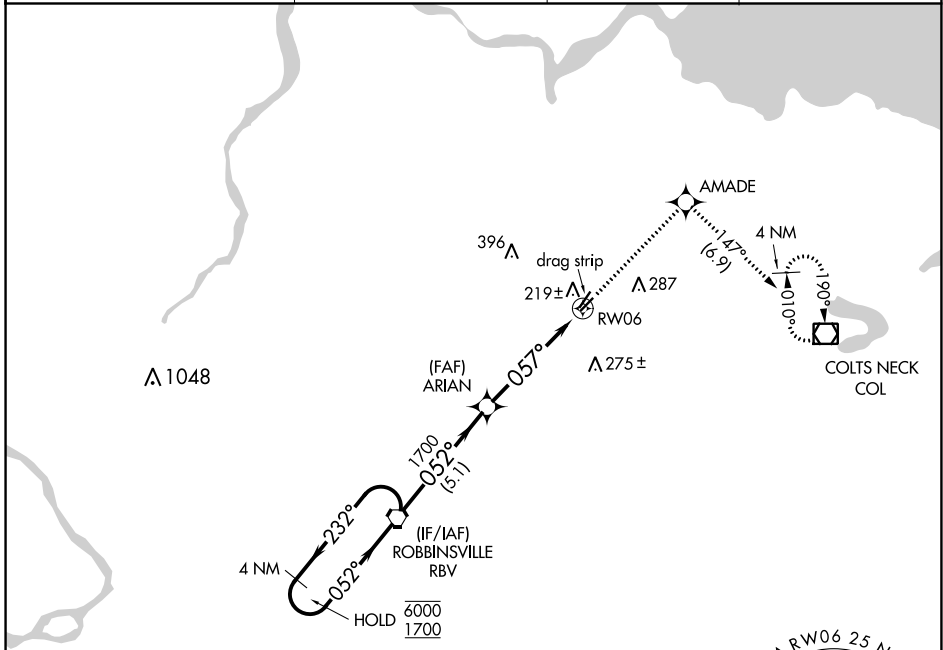
APP CRS	Rwy Idg	2994
057°	TDZE	87
	Apt Elev	87

RNAV (GPS) RWY 6

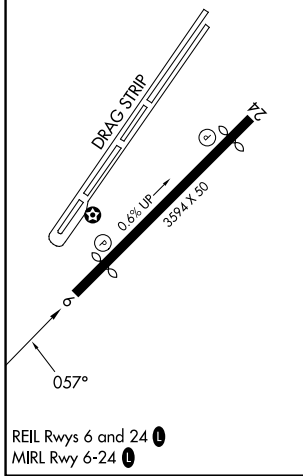
OLD BRIDGE (3N6)

RNP APCH.	Procedure NA at night. Rwy 6 helicopter visibility reduction below 1 SM NA. Use Belmar/Farmingdale altimeter setting; when not received, use Wrightstown altimeter setting and increase all MDA 20 feet.	MISSED APPROACH: Climb to 2000 direct AMADE and on track 147° to COL VOR/DME and hold.
Procedure NA at night. Use Belmar/Farmingdale altimeter setting; when not received, use Wrightstown altimeter setting and increase all MDA 20 feet.		

BLM AWOS-3PT 121.625	MC GUIRE APP CON 126.475 363.8	GCO 121.725	UNICOM 123.075 (CTAF)
--------------------------------	--	-----------------------	---------------------------------



ELEV 87	TDZE 87
---------	---------



REIL Rwy 6 and 24
MIRL Rwy 6-24



Visual Segment - Obstacles.			
2000	AMADE	tr 147°	COL
4 NM Holding Pattern	RBV VORTAC	ARIAN	RW06
6000 ← 232°	1700 → 052°	1700	057°
5.1 NM		4.9 NM	
CATEGORY	A	B	C D
LNAV MDA	660-1	573 (600-1)	NA

NE-2, 25 JAN 2024 to 22 FEB 2024

NE-2, 25 JAN 2024 to 22 FEB 2024