

APP CRS	Rwy ldg	<b>3200</b>
<b>255°</b>	TDZE	<b>464</b>
	Apt Elev	<b>464</b>

# RNAV (GPS) RWY 26

ORANGE COUNTY (OMH)

RNP APCH - GPS.

**▼** When local altimeter setting not received, use Charlottesville altimeter setting and increase all MDA 80 feet. Rwy 26 helicopter visibility reduction below 1 SM NA. Procedure NA at night.

**MISSED APPROACH:**  
Climb to 3100 direct ZAVRO and hold.

<b>AWOS-3</b> <b>118.075</b>	<b>POTOMAC APP CON</b> <b>132.85 323.125</b>	<b>UNICOM</b> <b>122.8 (CTAF) 0</b>
---------------------------------	---	--

Procedure NA for arrivals on CSN VORTAC airway radials 148 CW 239.

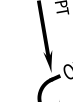
CASANOVA  
CSN



(IAF) DAGME



4 NM



1457A

882 RW26

WOGVO

3 NM to RW26

(FAF) IDUNE

863A

A 833

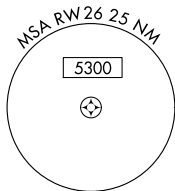
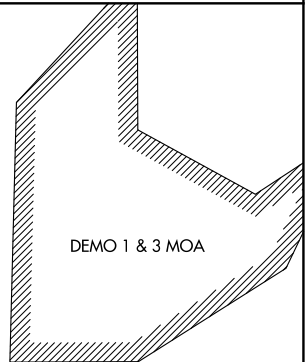


(IAF) FIMAR

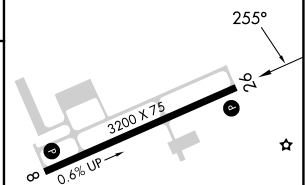
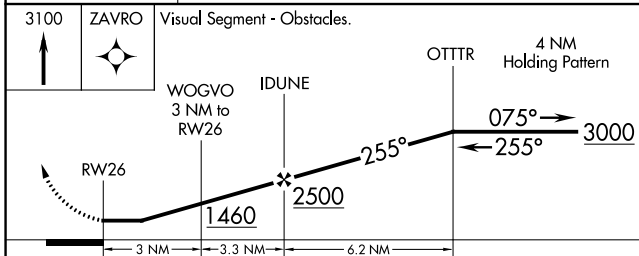
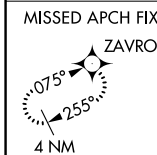


BROOKE BRV

Procedure NA for arrivals on BRV VORTAC airway radials 214 CW 309.



ELEV 464	TDZE 464
----------	----------



CATEGORY	A	B	C	D
LNAV MDA	980-1	516 (600-1)		NA
<b>CIRCLING</b>	1300-1¼	836 (900-1¼)		NA

MIRL Rwy 8-26 0  
REIL Rwy 8 and 26 0

NE-3, 25 JAN 2024 to 22 FEB 2024

NE-3, 25 JAN 2024 to 22 FEB 2024