

VORTAC GVE <b>115.6</b> Chan <b>103</b>	APP CRS <b>026°</b>	Rwy Idg TDZE Apt Elev	<b>N/A</b> <b>N/A</b> <b>464</b>
---	------------------------	-----------------------------	--

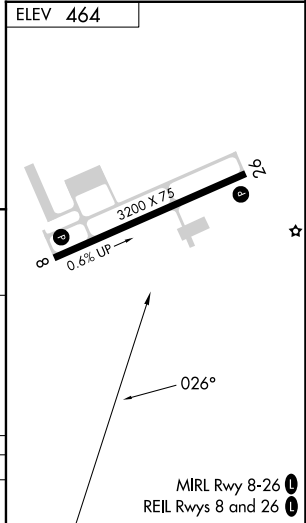
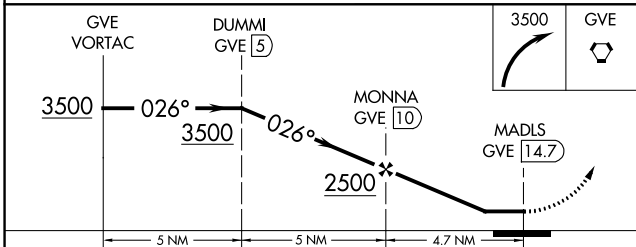
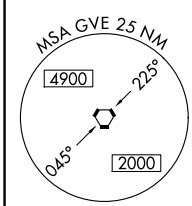
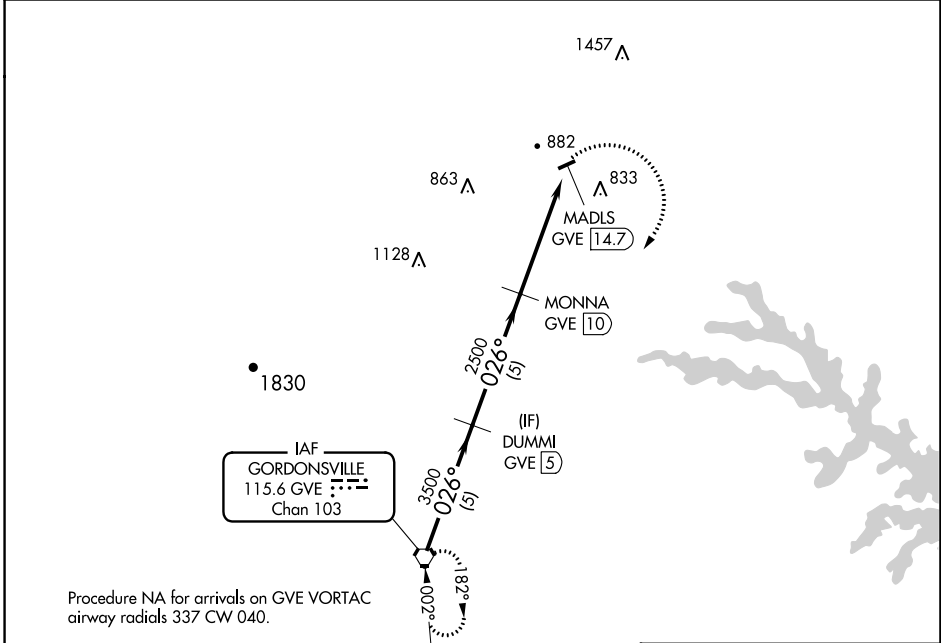
# VOR/DME-A

ORANGE COUNTY (OMH)

**⚠** Circling to Rwy 26 NA at night. When local altimeter setting not received, use Charlottesville altimeter setting and increase all MDA 80 feet.  
**⚠** Helicopter visibility reduction below 1 SM NA.

MISSED APPROACH: Climbing right turn to 3500 direct GVE VORTAC and hold.

AWOS-3 <b>118.075</b>	POTOMAC APP CON <b>132.85 323.125</b>	UNICOM <b>122.8</b> (CTAF) <b>①</b>
--------------------------	--	--



CATEGORY	A	B	C	D
<b>Ⓢ</b> CIRCLING	2000-1¼ 1536 (1600-1¼)	2000-1½ 1536 (1600-1½)		NA

NE-3, 25 JAN 2024 to 22 FEB 2024

NE-3, 25 JAN 2024 to 22 FEB 2024