

WAAS CH 97526 W09A	APP CRS 098°	Rwy Idg TDZE Apt Elev	3402 659 660
--	------------------------	-----------------------------	---

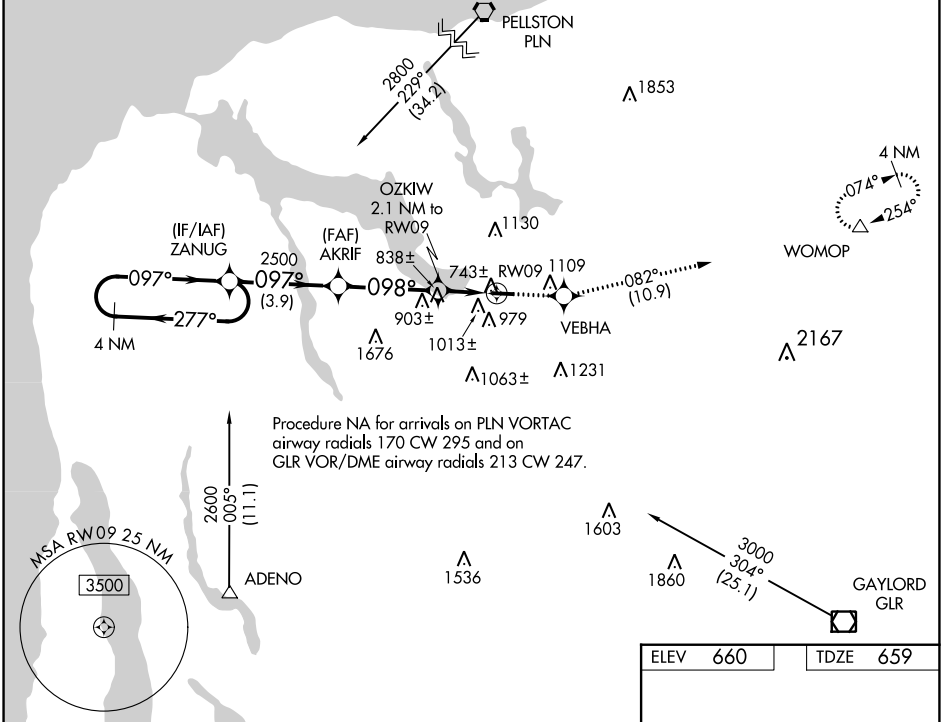
RNAV (GPS) RWY 9

BOYNE CITY MUNI (N98)

⚠ Use Charlevoix altimeter setting; when not received, use Harbor Springs altimeter setting.
⚠ NA Procedure NA at night. DME/DME RNP-0.3 NA. Helicopter visibility reduction below 1 SM NA.

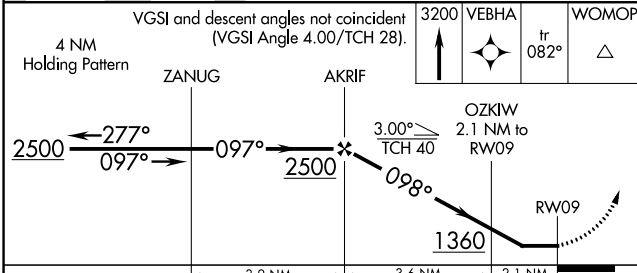
MISSED APPROACH: Climb to 3200 direct VEBHA and on track 082° to WOMOP and hold.

CVX AWOS-3P 120.0	MINNEAPOLIS CENTER 134.6 354.05	UNICOM 122.8 (CTAF)	122.9 0
-----------------------------	---	-------------------------------	-----------------------



EC-1, 25 JAN 2024 to 22 FEB 2024

EC-1, 25 JAN 2024 to 22 FEB 2024



ELEV	660	TDZE	659
------	-----	------	-----

REIL Rwy 27 **0**
MIRL Rwy 9-27 **0**

CATEGORY	A	B	C	D
LP MDA	1060-1	401 (400-1)		NA
INAV MDA	1260-1	601 (600-1)		NA
CIRCLING	1480-1¼ 820 (900-1¼)	1500-1¼ 840 (900-1¼)		NA