

BOISE, IDAHO

HI-ILS Z or LOC Z RWY 10R

LOC I-BOI 111.1	APCH CRS 102°	Rwy Idg TDZE Arpt Elev 9763 2836 2872
---------------------------	-------------------------	---

AL-57 [USAF]

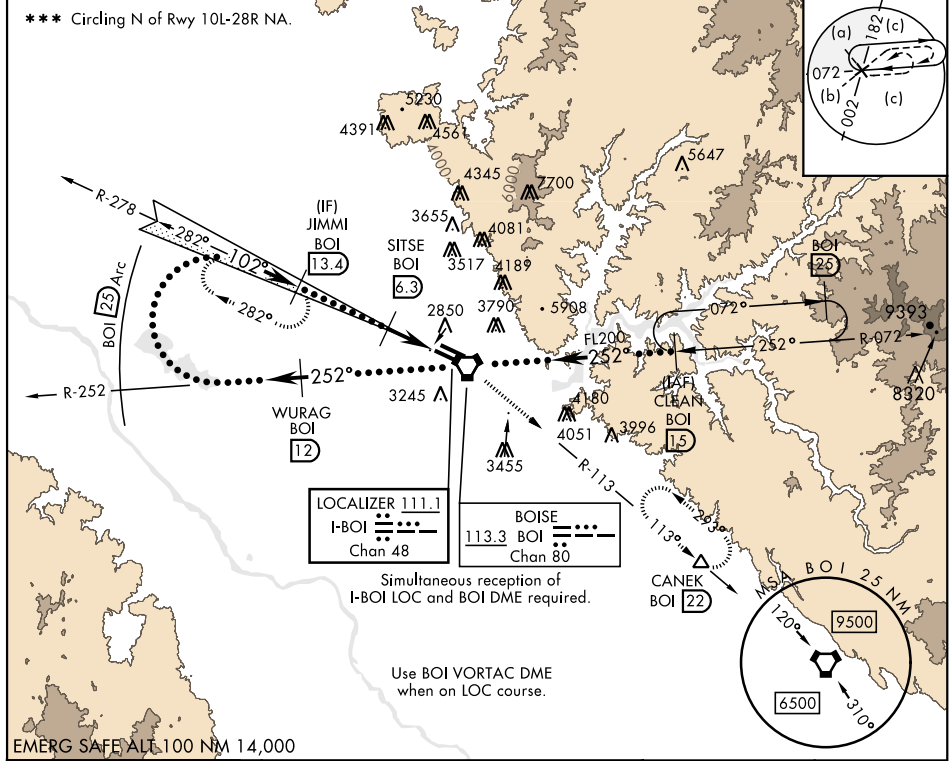
BOISE AIR TERMINAL (GOWEN FLD) (KBOI)

DME required.

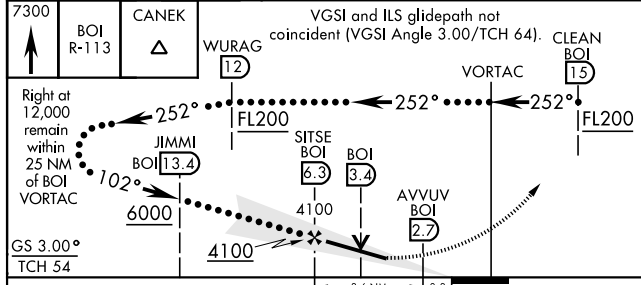


MISSED APPROACH: Climb to 7300 on BOI VORTAC R-113 to CANEK/BOI 22 DME and hold.

ATIS 123.9 290.4	BIG SKY APP CON 119.6 269.4	BOISE TOWER 118.1 257.8	GND CON 121.7 348.6	CLNC DEL 125.9 323.2	ASOS
----------------------------	---------------------------------------	-----------------------------------	-------------------------------	--------------------------------	------

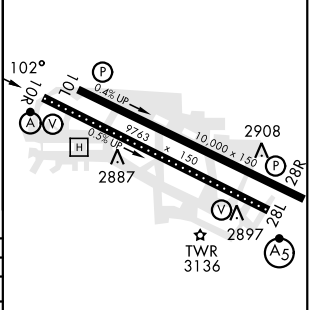


EMERG SAFE ALT 100 NM 14,000



ELEV 2872	TDZE 2836
-----------	-----------

CATEGORY	C	D	E
S-ILS 10R **	3036/18	200	(200-½)
S-LOC 10R **	3200/35	364	(400-¾)
***	3640-2¼ 768 (800-2¼)	3820-3 948 (1000-3)	3880-3 1008 (1100-3)



TDZL/CL Rwy 10R-28L
HIRL Rwy 10L-28R, 10R-28L
REIL Rwy 10L

BOISE, IDAHO

43°34'N-116°13'W

BOISE AIR TERMINAL (GOWEN FLD) (KBOI)

Amdt 5A 29DEC22

HI-ILS Z or LOC Z RWY 10R

NW-1, 22 FEB 2024 to 21 MAR 2024

NW-1, 22 FEB 2024 to 21 MAR 2024