

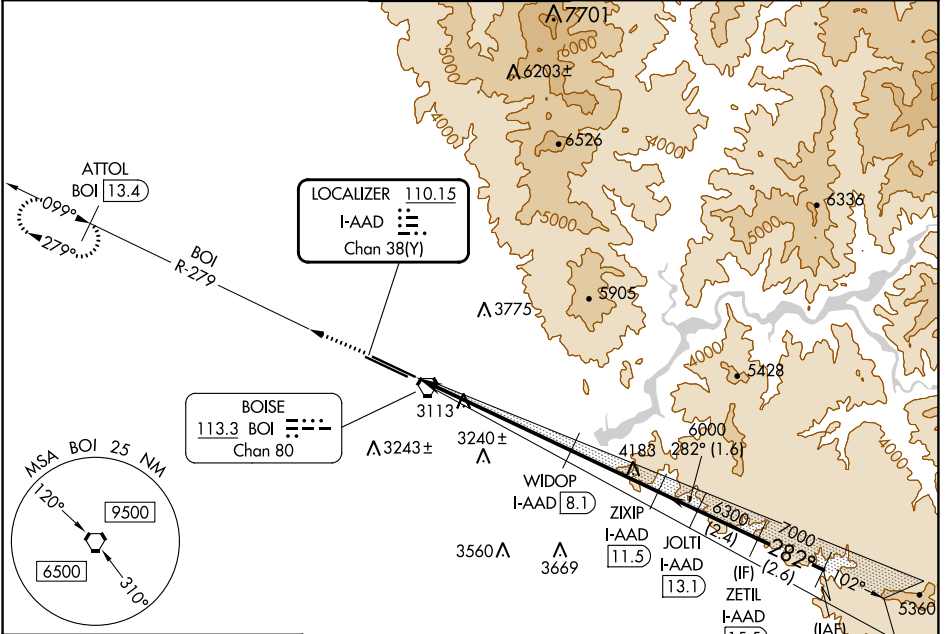
LOC/DME I-AAD <b>110.15</b> Chan 38(Y)	APP CRS <b>282°</b>	Rwy ldg <b>10000</b> TDZE <b>2871</b> Apt Elev <b>2871</b>
--	------------------------	--

# ILS or LOC RWY 28R

BOISE AIR TRML/GOWEN FLD (BOI)

<b>⚠</b> Circling NA north of Rwy 10L-28R. DME required.	MISSED APPROACH: Climb to 6000 on BOI VORTAC R-279 to ATTOL/BOI 13.4 DME and hold.
---	--

D-ATIS <b>123.9 290.4</b>	BIG SKY APP CON <b>119.6 269.4</b>	BOISE TOWER <b>118.1 257.8</b>	GND CON <b>121.7 348.6</b>	CLNC DEL <b>125.9 323.2</b>
------------------------------	---------------------------------------	-----------------------------------	-------------------------------	--------------------------------

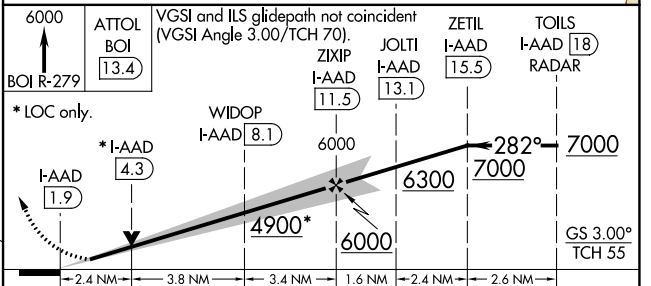
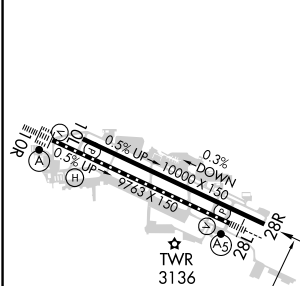


NW-1, 22 FEB 2024 to 21 MAR 2024

NW-1, 22 FEB 2024 to 21 MAR 2024

ELEV 2871	<b>D</b> TDZE 2871
-----------	--------------------

## RADAR and DME REQUIRED



BOISE R-279	ATTOL BOI 13.4	VGSI and ILS glidepath not coincident (VGSI Angle 3.00/TCH 70).	JOLTI I-AAD 13.1	ZETIL I-AAD 15.5	TOILS I-AAD 18
* LOC only.					
I-AAD 1.9	* I-AAD 4.3	WIDOP I-AAD 8.1	JOLTI I-AAD 13.1	ZETIL I-AAD 15.5	TOILS I-AAD 18
2.4 NM	3.8 NM	3.4 NM	1.6 NM	2.4 NM	2.6 NM
CATEGORY	A	B	C	D	
S-ILS 28R	3121-3/4 250 (300-3/4)				
S-LOC 28R	3700-1 829 (900-1)	3700-1 1/4 829 (900-1 1/4)	3700-2 1/2	829 (900-2 1/2)	
<b>C</b> CIRCLING	3700-1 1/4	829 (900-1 1/4)	3740-2 1/2	3820-3 949 (1000-3)	

REIL Rwy 10L  
TDZ/CL Rws 10R and 28L  
HIRL Rws 10L-28R and 10R-28L