

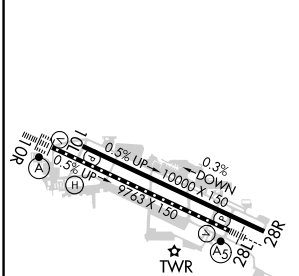
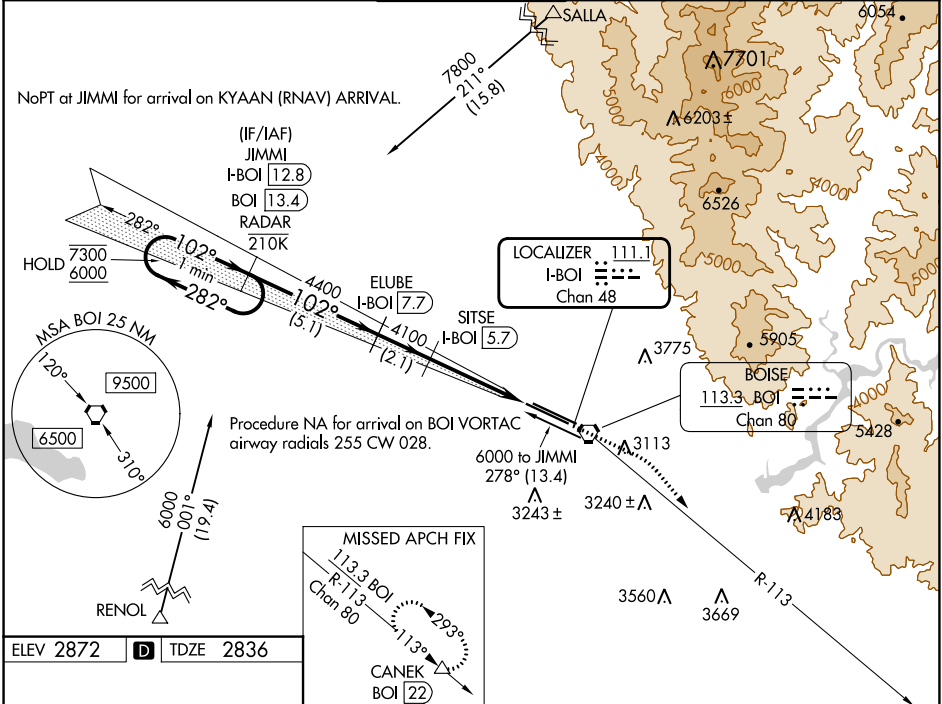
LOC/DME I-BOI	APP CRS	Rwy Idg	9763
111.1	102°	TDZE	2836
Chan 48		Apt Elev	2872

ILS Y RWY 10R (CAT II & III)

BOISE AIR TRML/GOWEN FLD (BOI)

DME required. RNAV 1 - GPS. From SALLA and RENOL.		ALSF-2	MISSED APPROACH: Climb to 3300 then climbing right turn to 7300 on BOI VORTAC R-113 to CANEK/BOI VORTAC 22 DME and hold.	
<p>▼ CAT II: RVR 1000 authorized with specific OPSPEC, MSPEC, or LOA approval and use of autoland or HUD to touchdown.</p>				

D-ATIS	BIG SKY APP CON	BOISE TOWER	GND CON	CLNC DEL
123.9 290.4	119.6 269.4	118.1 257.8	121.7 348.6	125.9 323.2



VGSI and ILS glidepath not coincident (VGSI Angle 3.00/TCH 64).	3300	7300	CANEK
	↑	↷	△
			BOI R-113

CATEGORY	A	B	C	D
S-ILS 10R	CAT II RA 124/12 100 DA 2936			
S-ILS 10R	CAT III RVR 03			

CATEGORY II & III ILS - SPECIAL AIRCREW & AIRCRAFT CERTIFICATION REQUIRED

NW-1, 22 FEB 2024 to 21 MAR 2024

NW-1, 22 FEB 2024 to 21 MAR 2024