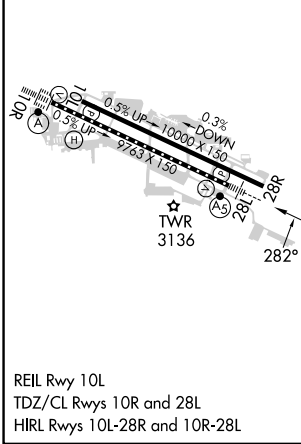
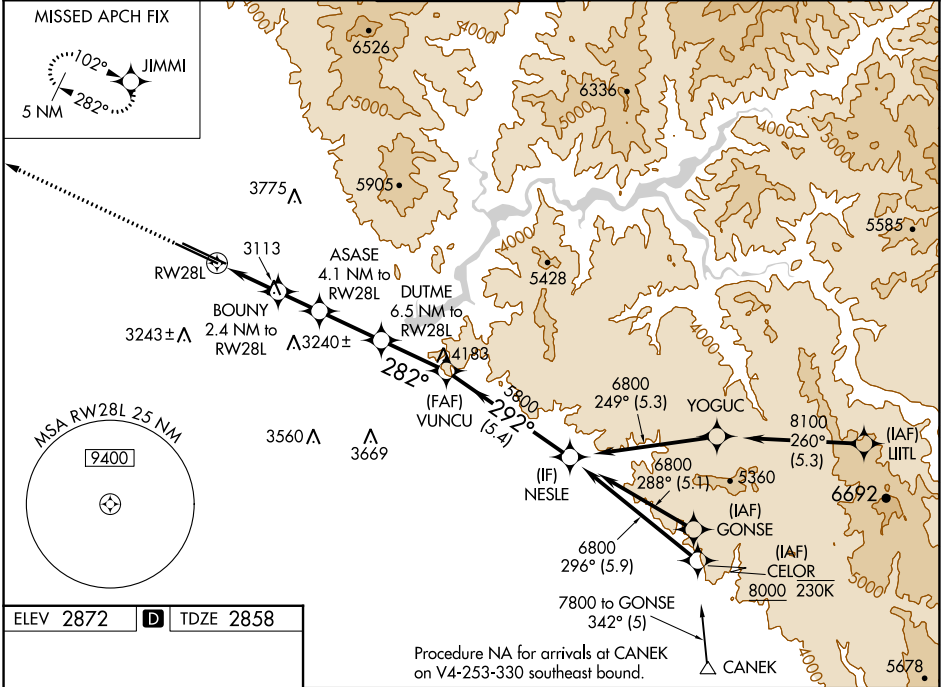


WAAS CH 7702 W28A	APP CRS 282°	Rwy Idg TDZE Apt Elev	9763 2858 2872
---------------------------------------	------------------------	-----------------------------	---

RNAV (GPS) Y RWY 28L

BOISE AIR TRML/GOWEN FLD (BOI)

RNP APCH - GPS.		MALSR 	MISSED APPROACH: Climb to 6000 direct JIMMI and hold, continue climb-in-hold to 6000.	
 Circling NA north of Rwy 10L-28R. For uncompensated Baro-VNAV systems, LNAV/VNAV NA below -1.4°C or above 54°C. For inop ALS, increase LPV all Cats visibility to RVR 4500, and LNAV/VNAV all Cats visibility to RVR 6000.				
D-ATIS 123.9 290.4	BIG SKY APP CON 119.6 269.4	BOISE TOWER 118.1 257.8	GND CON 121.7 348.6	CLNC DEL 125.9 323.2



Procedure NA for arrivals at CANEK on V4-253-330 southeast bound.

	JIMMI	VUNCU	NESLE
6000	6000	5800	6800
4200	4200	4980	4980
3680	3680	3680	3680
GP 3.00° TCH 50			
CATEGORY	A	B	C
LPV DA		3160/24	302 (300-½)
LNAV/VNAV DA		3267/40	409 (400-¾)
LNAV MDA	3380/24	522 (600-½)	3380/55 522 (600-1)
CIRCLING	3440-1	568 (600-1)	3640-2¼ 768 (800-2¼) 3820-3 948 (1000-3)

NW-1, 22 FEB 2024 to 21 MAR 2024

NW-1, 22 FEB 2024 to 21 MAR 2024