

BOISE, IDAHO

AL-57 (FAA)

23278

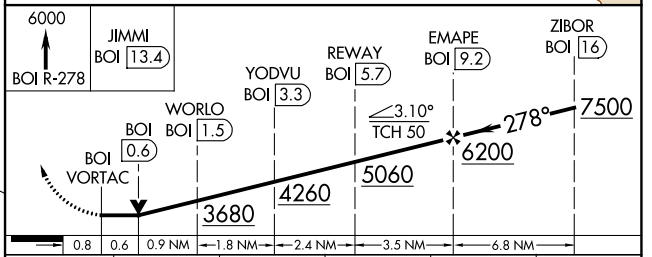
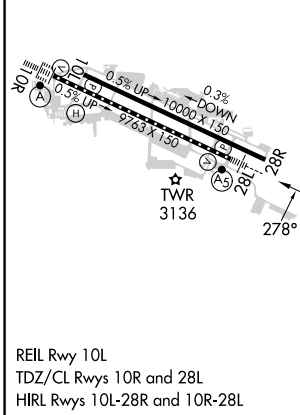
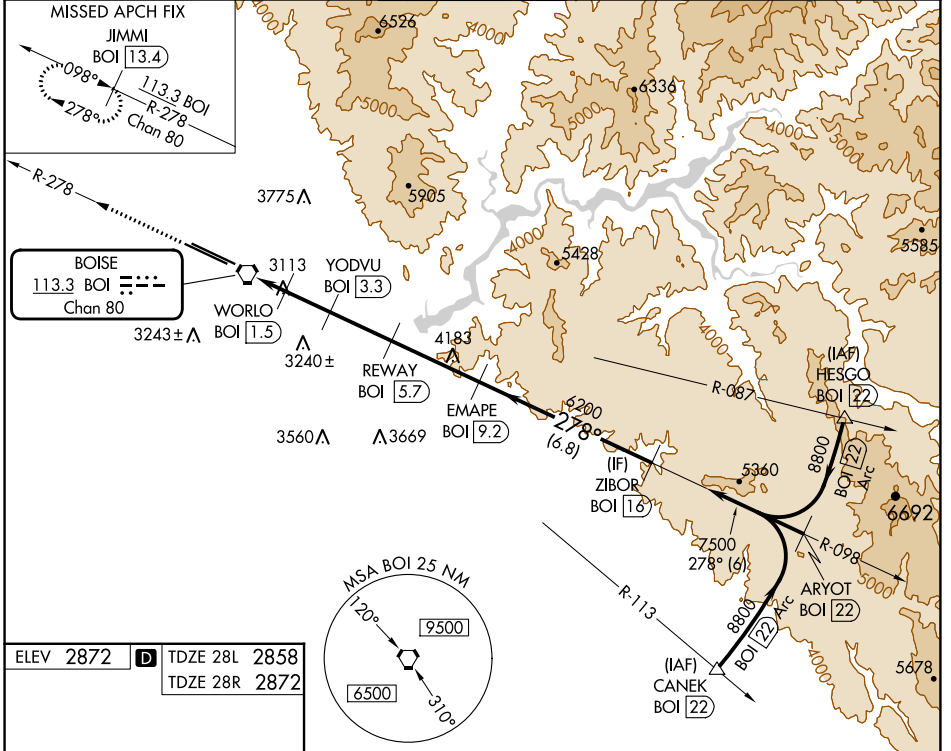
VORTAC BOI <b>113.3</b> Chan 80	APP CRS <b>278°</b>	Rwy Idg	28L	28R
		TDZE	<b>9763</b>	<b>10000</b>
		Apt Elev	<b>2858</b>	<b>2872</b>

# VOR Y or TACAN Y RWY 28L

BOISE AIR TRML/GOWEN FLD (BOI)

DME required.	MALSR Rwy 28L	MISSED APPROACH: Climb to 6000 on BOI VORTAC R-278 to JIMMI/13.4 DME and hold.
<p>Circling NA north of Rwy 10L-28R. For inop ALS, increase S-28L Cat E visibility to 1½ SM.</p>		

D-ATIS <b>123.9 290.4</b>	BIG SKY APP CON <b>119.6 269.4</b>	BOISE TOWER <b>118.1 257.8</b>	GND CON <b>121.7 348.6</b>	CLNC DEL <b>125.9 323.2</b>
------------------------------	---------------------------------------	-----------------------------------	-------------------------------	--------------------------------



CATEGORY	A	B	C	D	E
S-28L	3380/24	522 (600-½)	3380/55 522 (600-1)		
SIDESTEP 28R	3380-1⅓	508 (600-1⅓)	3380-1⅞ 508 (600-1⅞)	3380-2½	508 (600-2½)
<b>C</b> CIRCLING	3440-1	568 (600-1)	3640-2¼ 768 (800-2¼)	3820-3	3880-3 1008 (1100-3)

BOISE, IDAHO  
Amdt 3 14JUL22

43°34'N-116°13'W

# VOR Y or TACAN Y RWY 28L

NW-1, 22 FEB 2024 to 21 MAR 2024

NW-1, 22 FEB 2024 to 21 MAR 2024