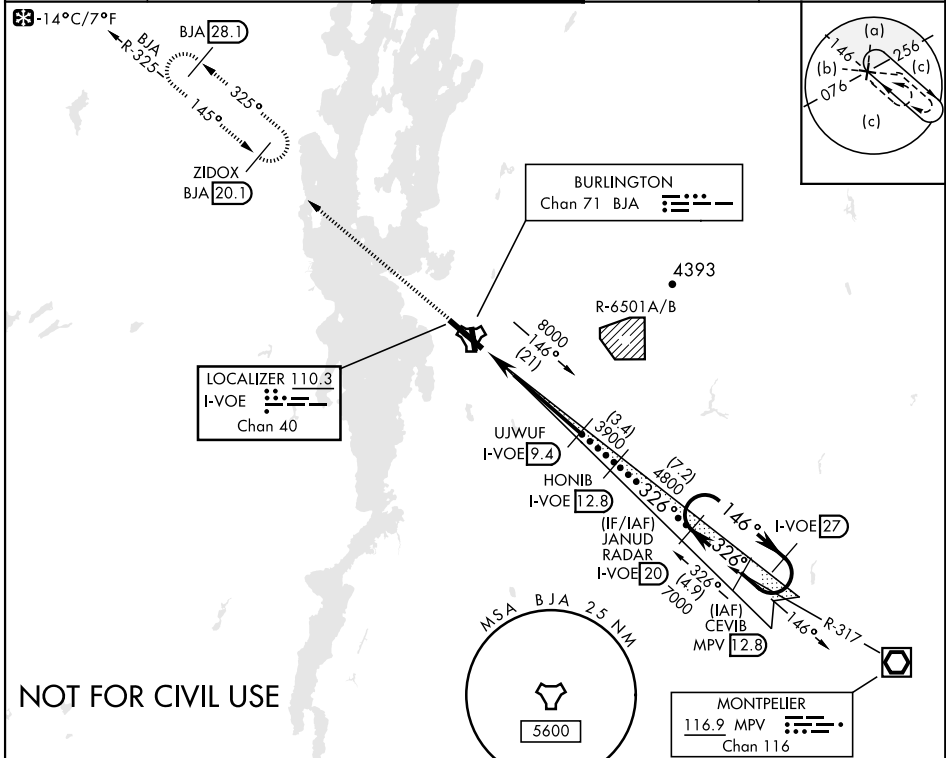


# HI-LOC RWY 33

LOC/DME I-VOE <b>110.3</b> Chan <b>40</b>	APCH CRS <b>326°</b>	Rwy ldg TDZE <b>334</b> Arprt Elev <b>335</b>	AL-70 [USAF]	PATRICK LEAHY BURLINGTON INTL (KBTV)
---	-------------------------	---	--------------	--------------------------------------

DME required	MALSF A4	MISSED APPROACH: Climb to 7000 on BJA TACAN R-325 to ZIDOX/BJA 20.1 DME and hold, continue climb-in-hold to 7000.
--------------	-------------	---

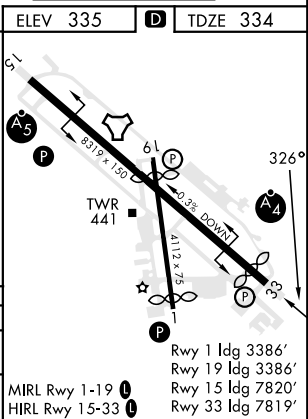
ATIS <b>123.8 269.9</b>	APP CON <b>121.1 278.8</b>	TOWER ★ <b>118.3 (CTAF) 0257.8</b>	GND CON <b>126.3 348.6</b>	CLNC DEL <b>119.15</b>
----------------------------	-------------------------------	---------------------------------------	-------------------------------	---------------------------



NOT FOR CIVIL USE

EMERG SAFE ALT 100 NM 8500

7000 BJA R-325	ZIDOX BJA 20.1	VGSI and descent angles not coincident (VGSI angle 3.20/TCH 53)	HONIB I-VOE 12.8	JANUD RADAR I-VOE 20	I-VOE 27
I-VOE 0.2	I-VOE 0.8	I-VOE 2.2	I-VOE 4.5	I-VOE 9.4	I-VOE 12.8
1240	1620	2100	3900	4800	7000
2.3 NM	1 NM	1.3 NM	4.9 NM		
CATEGORY	C		D		E
S-LOC 33 *	760/50		426 (500-1)		
CIRCLING	1200-2½ 865 (900-2½)		1380-3 1045 (1100-3)		1420-3 1085 (1100-3)
					MIRL Rwy 1-19 HIRL Rwy 15-33



# HI-LOC RWY 33

NE-1, 22 FEB 2024 to 21 MAR 2024

NE-1, 22 FEB 2024 to 21 MAR 2024