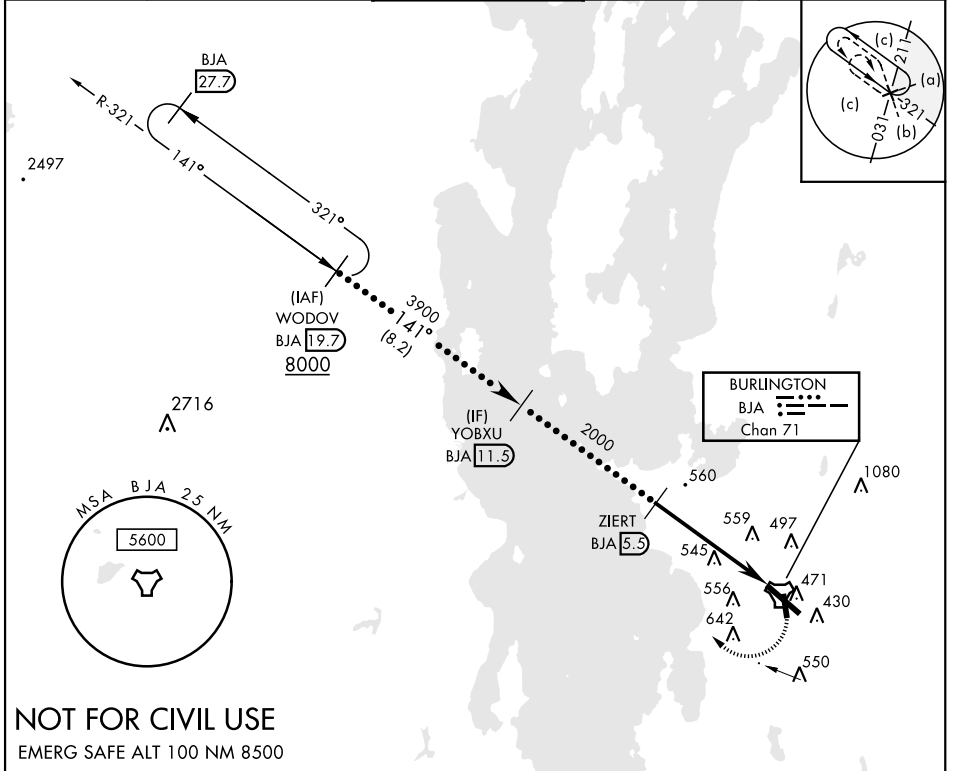


# HI-TACAN RWY 15

TACAN BJA Chan <b>71</b>	APCH CRS <b>141°</b>	Rwy ldg TDZE <b>7820</b> 326 Arpt Elev <b>335</b>	AL-70 [USAF]	PATRICK LEAHY BURLINGTON INTL (KBTV)
<p><b>V</b> * When ALS inop, increase CAT CDE vis to 1 3/8 mile.</p> <p><b>A</b></p>			MALSRL <b>A5</b>	MISSED APPROACH: Climbing right turn to 8000 on BJA R-321 to WODOV / BJA 19.7 DME and hold, continue climb-in-hold to 8000.

ATIS <b>123.8 269.9</b>	APP CON <b>121.1 278.8</b>	TOWER ★ <b>118.3 (CTAF) 0257.8</b>	GND CON <b>126.3 348.6</b>	CLNC DEL <b>119.15</b>
----------------------------	-------------------------------	---------------------------------------	-------------------------------	---------------------------



**NOT FOR CIVIL USE**  
EMERG SAFE ALT 100 NM 8500

WODOV <b>19.7</b>	YOBXU <b>11.5</b>	ZIERT <b>5.5</b>	TACAN <b>1.9</b>	ZIBVO <b>0.5</b>	ELEV 335	TDZE 326
<p>8000</p> <p>3900</p> <p>2000</p> <p>3.05° TCH 51</p> <p>3.6 NM 1.5 NM</p>					<p>Rwy 1 ldg 3386'</p> <p>Rwy 19 ldg 3386'</p> <p>Rwy 15 ldg 7820'</p> <p>Rwy 33 ldg 7819'</p> <p>TWR 441</p> <p>MIRL Rwy 1-19</p> <p>HIRL Rwy 15-33</p>	
CATEGORY	C	D	E			
S-15*	820/50		494 (500-1)			
CIRCLING	1220-2 3/4 885 (900-2 3/4)	1380-3 1045 (1100-3)	1500-3 1165 (1200-3)			

# HI-TACAN RWY 15

NE-1, 22 FEB 2024 to 21 MAR 2024

NE-1, 22 FEB 2024 to 21 MAR 2024