

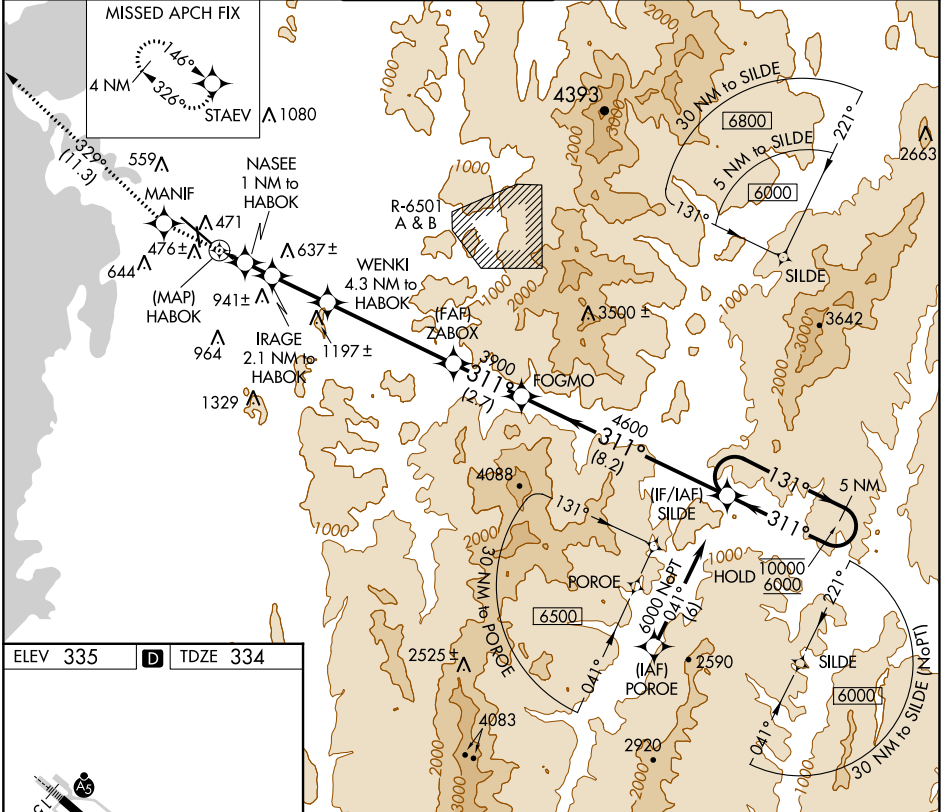
APP CRS	Rwy Idg	<b>7819</b>
<b>311°</b>	TDZE	<b>334</b>
	Apt Elev	<b>335</b>

# RNAV (GPS) Y RWY 33

PATRICK LEAHY BURLINGTON INTL (BTV)

RNP APCH.	<p>⚠ Circling Rwy 1 NA at night.          Rwy 33 helicopter visibility reduction below 3/4 SM NA.          For inop ALS, increase LNAV Cat C visibility to RVR 6000.</p>	MALSF	<p>MISSED APPROACH: Climb to 3000 direct MANIF and on track 329° to STAEV and hold.</p>
-----------	--	-------	---

ATIS	BURLINGTON APP CON *	BURLINGTON TOWER *	GND CON	CLNC DEL	UNICOM
<b>123.8 269.9</b>	<b>121.1 278.8</b>	<b>118.3 (CTAF) 0 257.8</b>	<b>126.3 348.6</b>	<b>119.15</b>	<b>122.95</b>



ELEV 335 **D** TDZE 334

3000	MANIF	tr 329°	STAEV	WENKI 4.3 NM to HABOK	ZABOX	FOGMO	SILDE	5 NM Holding Pattern
				IRAGE 2.1 NM to HABOK				
	HABOK			NASEE 2.1 NM to HABOK				
				3.47° TCH 55	940	1320	2120	3900
								131° 10000
								← 311° 6000
								VGSI and descent angles not coincident (VGSI Angle 3.20/TCH 53).
	0.5	1 NM	1.1 NM	2.2 NM	5 NM	2.7 NM	8.2 NM	
CATEGORY	A	B	C	D	E			
LNAV MDA	740/40	406 (500-3/4)	740/50	406 (500-1)	740/60	406 (500-1 1/4)		
CIRCLING	840-1	860-1	1200-2 1/2	1380-3	1500-3			
	505 (600-1)	525 (600-1)	865 (900-1 1/2)	1045 (1100-3)	1165 (1200-3)			

NE-1, 22 FEB 2024 to 21 MAR 2024

NE-1, 22 FEB 2024 to 21 MAR 2024