

GOLDSBORO, NORTH CAROLINA

HI-ILS or LOC Z RWY 8

LOC I-GSB 109.3	APCH CRS 081°	Rwy Idg 11,760 TDZE 73 Arprt Elev 109
---------------------------	-------------------------	--

[USAF]

SEYMOUR JOHNSON AFB (KGSB)

RADAR or DME required.

ALSF-1

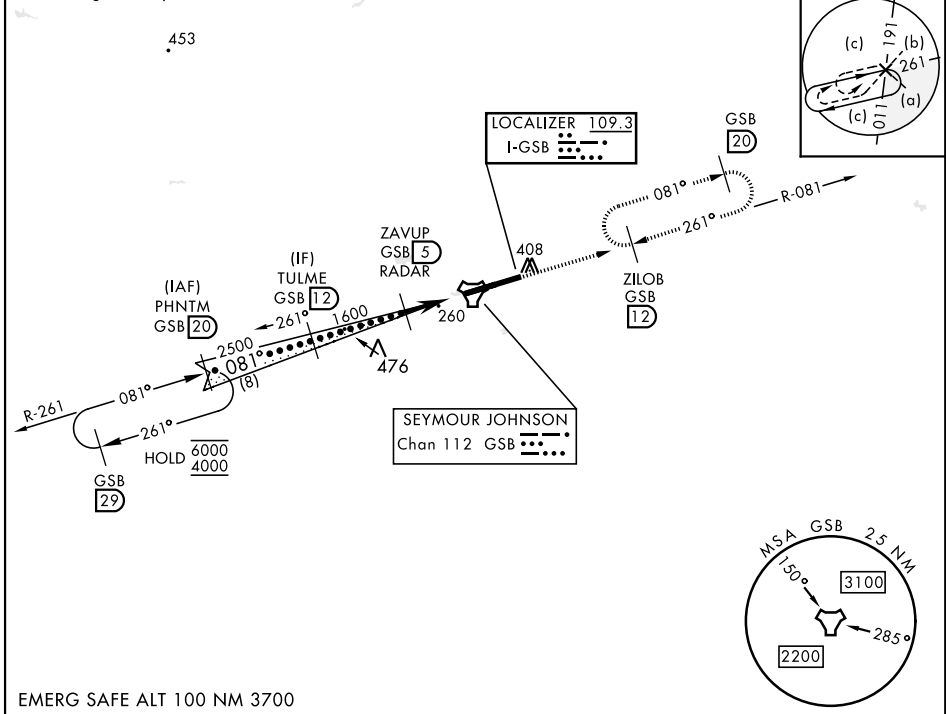
MISSED APPROACH: Climb to 2300 via GSB R-081 to ZILOB and hold.

▲ * When ALS inop, increase RVR to 40 and vis to 3/4 mile.
 ** When ALS inop, increase vis to 1 3/8 miles.



ATIS ★ 317.625	APP CON 123.7 290.9 (258°- 110°) 119.7 273.6 (111°- 257°)	TOWER ★ 126.25 370.875	GND CON 132.45 275.8	CLNC DEL 128.025 270.8
--------------------------	---	----------------------------------	--------------------------------	----------------------------------

*** Circling N of Rwy 8-26 not authorized.



SE-2, 22 FEB 2024 to 21 MAR 2024

SE-2, 22 FEB 2024 to 21 MAR 2024

EMERG SAFE ALT 100 NM 3700

VGSi and ILS glidepath not coincident (VGSi Angle 3.00/TCH 55).			2300 GSB R-081	ZILOB R-081 12	ELEV 109	TDZE 73			
CATEGORY	C	D	E	HIRL Rwy 8-26					
S-ILS 8*	273/24	200	(200-1/2)	FAF to MAP 4.1 NM					
S-LOC 8**	520/45	447	(500-3/4)	Knots	120	140	160	180	200
CIRCLING ***	680-1 1/2	740-2	740-2 1/4	Min:Sec	2:03	1:45	1:32	1:22	1:14
	571 (600-1/2)	631 (700-2)	631 (700-2 1/4)						

GOLDSBORO, NORTH CAROLINA

35° 20' N-77° 58' W

SEYMOUR JOHNSON AFB (KGSB)

Amtd 8 03NOV22

HI-ILS or LOC Z RWY 8