

GOLDSBORO, NORTH CAROLINA

# ILS or LOC Y RWY 26

LOC I-DDX <b>109.9</b>	APCH CRS <b>261°</b>	Rwy ldg 11,760 TDZE <b>109</b> Arprt Elev <b>109</b>
---------------------------	-------------------------	---

[USAF]

SEYMOUR JOHNSON AFB (KGSB)

RADAR or DME required



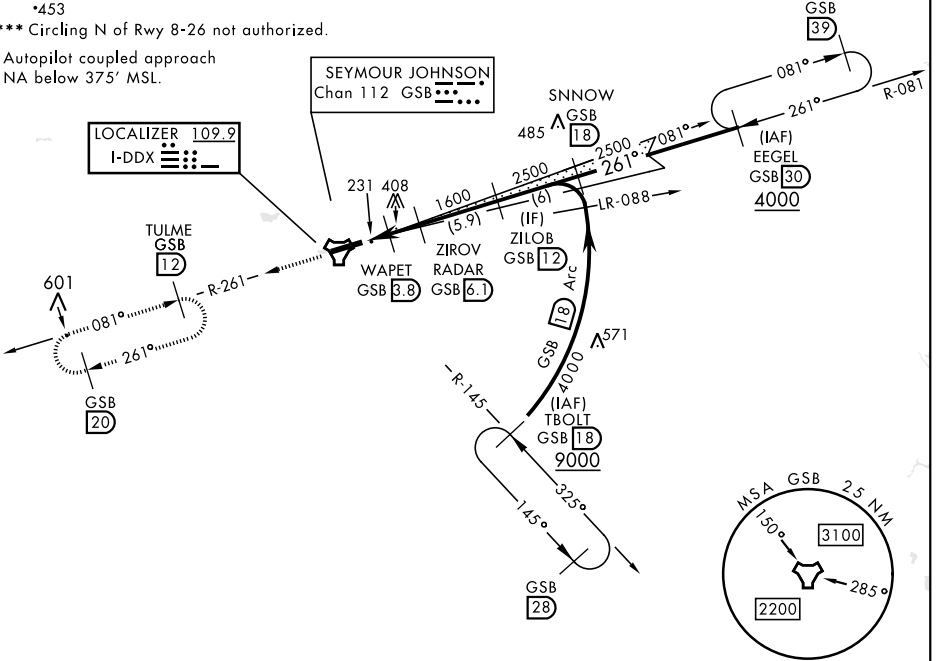
MISSED APPROACH: Climb to 2200 via GSB TACAN R-261 to TULME and hold.

▼ \* When ALS inop, increase RVR to 40 and vis to 3/4 mile.  
 \*\* When ALS inop, increase CAT AB RVR to 55 and vis to 1 mile, CAT CDE RVR to 60 and vis to 1 1/2 miles.

ATIS ★ <b>317.625</b>	APP CON <b>123.7 290.9</b> (258°-110°) <b>119.7 273.6</b> (111°-257°)	TOWER ★ <b>126.25 370.875</b>	GND CON <b>132.45 275.8</b>	CLNC DEL <b>128.025 270.8</b>
--------------------------	---	----------------------------------	--------------------------------	----------------------------------

\*453  
 \*\*\* Circling N of Rwy 8-26 not authorized.

Autopilot coupled approach  
NA below 375' MSL.



SE-2, 22 FEB 2024 to 21 MAR 2024

SE-2, 22 FEB 2024 to 21 MAR 2024

EMERG SAFE ALT 100 NM 3700

ELEV 109	TDZE 109	2200 GSB R-261	TULME R-261 12																							
HIRL Rwy 8-26		<table border="1"> <thead> <tr> <th>CATEGORY</th> <th>A</th> <th>B</th> <th>C</th> <th>D</th> <th>E</th> </tr> </thead> <tbody> <tr> <td>S-ILS 26*</td> <td colspan="5">309/24</td> </tr> <tr> <td>S-LOC 26**</td> <td>500/24</td> <td>391 (400-1/2)</td> <td>200</td> <td colspan="2">391 (400-3/4)</td> </tr> </tbody> </table>							CATEGORY	A	B	C	D	E	S-ILS 26*	309/24					S-LOC 26**	500/24	391 (400-1/2)	200	391 (400-3/4)	
CATEGORY	A	B	C	D	E																					
S-ILS 26*	309/24																									
S-LOC 26**	500/24	391 (400-1/2)	200	391 (400-3/4)																						
FAF to MAP 4 NM		<table border="1"> <thead> <tr> <th>Knots</th> <th>60</th> <th>90</th> <th>120</th> <th>150</th> <th>180</th> </tr> </thead> <tbody> <tr> <td>Min:Sec</td> <td>4:00</td> <td>2:40</td> <td>2:00</td> <td>1:36</td> <td>1:20</td> </tr> </tbody> </table>							Knots	60	90	120	150	180	Min:Sec	4:00	2:40	2:00	1:36	1:20						
Knots	60	90	120	150	180																					
Min:Sec	4:00	2:40	2:00	1:36	1:20																					
<input checked="" type="checkbox"/> CIRCLING ***		580-1 471 (500-1)	600-1 491 (500-1)	680-1 1/2 571 (600-1 1/2)	740-2 631 (700-2)	740-2 1/4 631 (700-2 1/4)																				

GOLDSBORO, NORTH CAROLINA

35°20'N-77°58'W

SEYMOUR JOHNSON AFB (KGSB)

Amdt 9 03NOV22

# ILS or LOC Y RWY 26