

GOLDSBORO, NORTH CAROLINA

ILS or LOC Y RWY 8

LOC I-GSB 109.3	APCH CRS 081°	Rwy Idg 11,760
		TDZE 73
		Arpt Elev 109

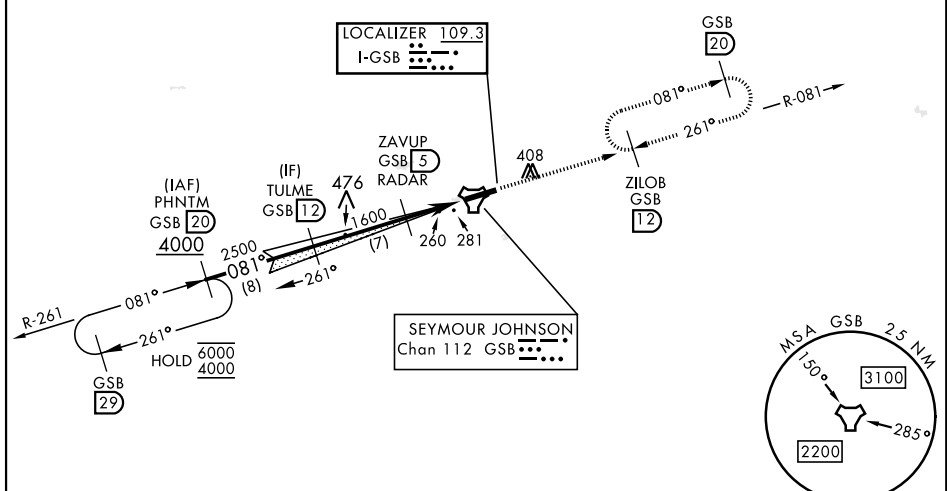
[USAF]

SEYMOUR JOHNSON AFB (KGSB)

RADAR or DME required.	ALSF-1 	MISSED APPROACH: Climb to 2300 via GSB R-081 to ZILOB and hold.
▼ * When ALS inop, increase RVR to 40 and vis to 3/4 mile.		

ATIS ★ 317.625	APP CON 123.7 290.9 (258°-110°) 119.7 273.6 (111°-257°)	TOWER ★ 126.25 370.875	GND CON 132.45 275.8	CLNC DEL 128.025 270.8
--------------------------	---	----------------------------------	--------------------------------	----------------------------------

** When ALS inop, increase CAT AB RVR to 55 and vis to 1 mile, CAT CDE vis to 1 3/8 miles.
 *** Circling N of Rwy 8-26 not authorized.



SE-2, 22 FEB 2024 to 21 MAR 2024

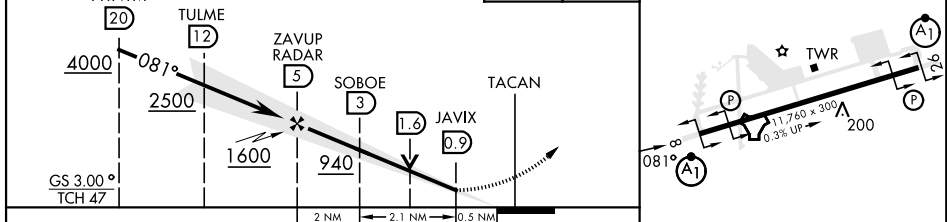
SE-2, 22 FEB 2024 to 21 MAR 2024

ELEV	109	TDZE	73
------	-----	------	----

EMERG SAFE ALT 100 NM 3700

VGSI and ILS glidepath not coincident (VGSI Angle 3.00/TCH 55).

2300	ZILOB
GSB	R-081
	12



CATEGORY	A	B	C	D	E
S-ILS 8*	273/24		200	(200-1/2)	
S-LOC 8**	520/24	447 (500-1/2)	520/45	447	(500-7/8)

	***	580-1	600-1	680-1 1/2	740-2	740-2 1/4
		471 (500-1)	491 (500-1)	571 (600-1 1/2)	631 (700-2)	631 (700-2 1/4)
	HIRL Rwy 8-26	FAF to MAP 4.1 NM				
	Knots	60	90	120	150	180
	Min:Sec	4:06	2:44	2:03	1:38	1:22

GOLDSBORO, NORTH CAROLINA 35°20'N-77°58'W SEYMOUR JOHNSON AFB (KGSB)

Amdt 8 03NOV22

ILS or LOC Y RWY 8