

WAAS CH 82539 W27A	APP CRS 272°	Rwy Idg TDZE Apt Elev	5001 629 631
--	------------------------	-----------------------------	---

AL-183 (FAA)

RNAV (GPS) RWY 27
GREENWOOD COUNTY (G.R.D)

For uncompensated Baro-VNAV systems, LNAV/VNAV NA below -10°C (14°F) or above 54°C (130°F). Baro-VNAV and VDP NA when using Laurens altimeter setting.
 DME/DME RNP-0.3 NA. Circling Rwy 5, 23 NA at night. Rwy 27 helicopter visibility reduction below 3/4 SM NA. When local altimeter setting not received, use Laurens altimeter setting: increase LPV DA to 932 feet and all visibilities 1/8 SM; increase LNAV/VNAV DA to 936 feet and all visibilities 1/8 SM; increase all MDA 60 feet and LNAV visibility Cats C and D 1/8 SM and Circling visibility Cats C and D 1/4 SM. For inop ALS, increase LNAV/VNAV all Cats visibility to 1/8 SM and LNAV all Cats visibility to 1 SM. For inop ALS when using Laurens altimeter setting, increase LPV and LNAV/VNAV all Cats and LNAV Cats A and B visibility to 1 SM and LNAV Cats C and D visibility to 1 1/8 SM.

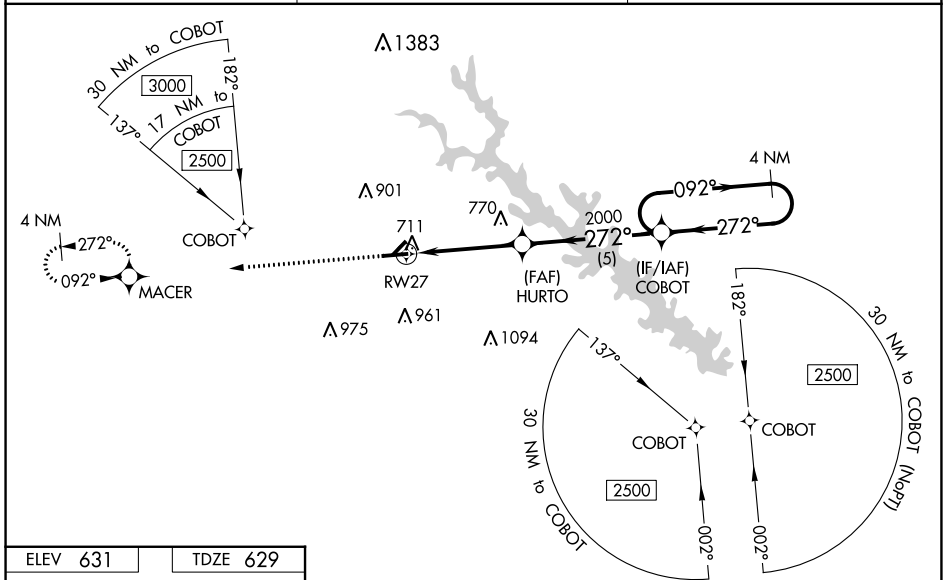
ODALS

MISSED APPROACH:
Climb to 2500 direct MACER and hold.

ASOS
121.125

GREER APP CON ★
120.6 350.2

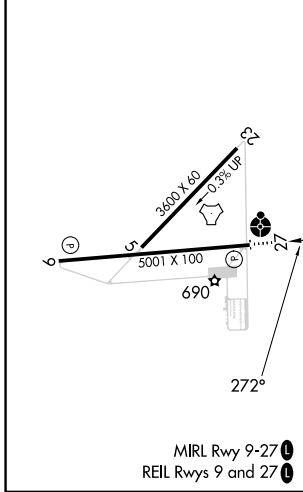
UNICOM
122.975 (CTAF) 0



SE-2, 22 FEB 2024 to 21 MAR 2024

SE-2, 22 FEB 2024 to 21 MAR 2024

ELEV 631	TDZE 629
-----------------	-----------------



2500	MACER				
*LNAV only.					
RW27		HURTO	COBOT	4 NM Holding Pattern	
1 NM		3.2 NM	5 NM	GP 3.00° TCH 53	
CATEGORY	A	B	C	D	
LPV DA	879-3/4		250 (300-3/4)		
LNAV/VNAV DA	883-3/4		254 (300-3/4)		
LNAV MDA	980-3/4		351 (400-3/4)		980-7/8 351 (400-7/8)
CIRCLING	1080-1	1100-1	1320-2	1340-2 1/4	
	449 (500-1)	469 (500-1)	689 (700-2)	709 (800-2 1/4)	