

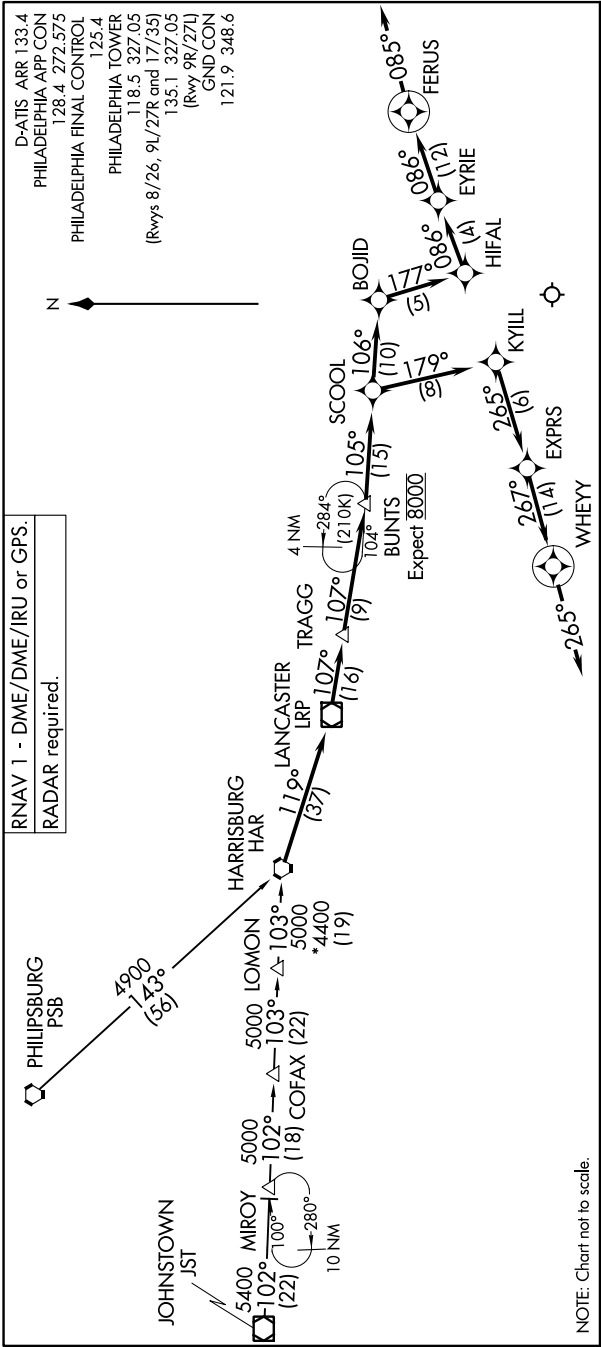
(HAR.BOJID4) 23278

AL-320 (FAA)

PHILADELPHIA INTL (PHL)  
PHILADELPHIA, PENNSYLVANIA

# BOJID FOUR ARRIVAL (RNAV)

NE-4, 22 FEB 2024 to 21 MAR 2024



D-ATIS ARR 133.4  
 PHILADELPHIA APP CON  
 128.4 272.575  
 PHILADELPHIA FINAL CONTROL  
 125.4  
 PHILADELPHIA TOWER  
 118.5 327.05  
 (Rwys 8/26, 9L/27R and 17/35)  
 135.1 327.05  
 (Rwy 9R/27L)  
 GND CON  
 121.9 348.6

RNAV 1 - DME/DME/IRU or GPS.  
 RADAR required.

## ARRIVAL ROUTE DESCRIPTION

JOHNSTOWN TRANSITION (JST.BOJID4):  
PHILIPSBURG TRANSITION (PSB.BOJID4):

From HAR VORTAC on track 119° to LRP LANCASTER on track 103°, then on track 102° to MIROY, then on track 102° to COFAX, then on track 103° to LANCASTER LRP, then on track 107° to TRAGG, then on track 107° to BUNTS, then on track 105° to SCOOOL, then on track 106° to BOJID, then on track 177° to HIFAL, then on track 086° to EYRIE, then on heading 086° to FERUS, then on heading 085° to BUNTS, then on track 267° to WHEYY, then on track 265° to EXPRS, then on track 265° to KYILL, then on track 179° to WHEYY, then on heading 265° to SCOOOL, then on heading 265° to TRAGG, then on track 107° to BUNTS, then on track 105° to SCOOOL, then on heading 265°. Expect RADAR vectors to final approach course.

BOJID FOUR ARRIVAL (RNAV)  
 (HAR.BOJID4) 05OCT23

PHILADELPHIA, PENNSYLVANIA  
 PHILADELPHIA INTL (PHL)

NE-4, 22 FEB 2024 to 21 MAR 2024