

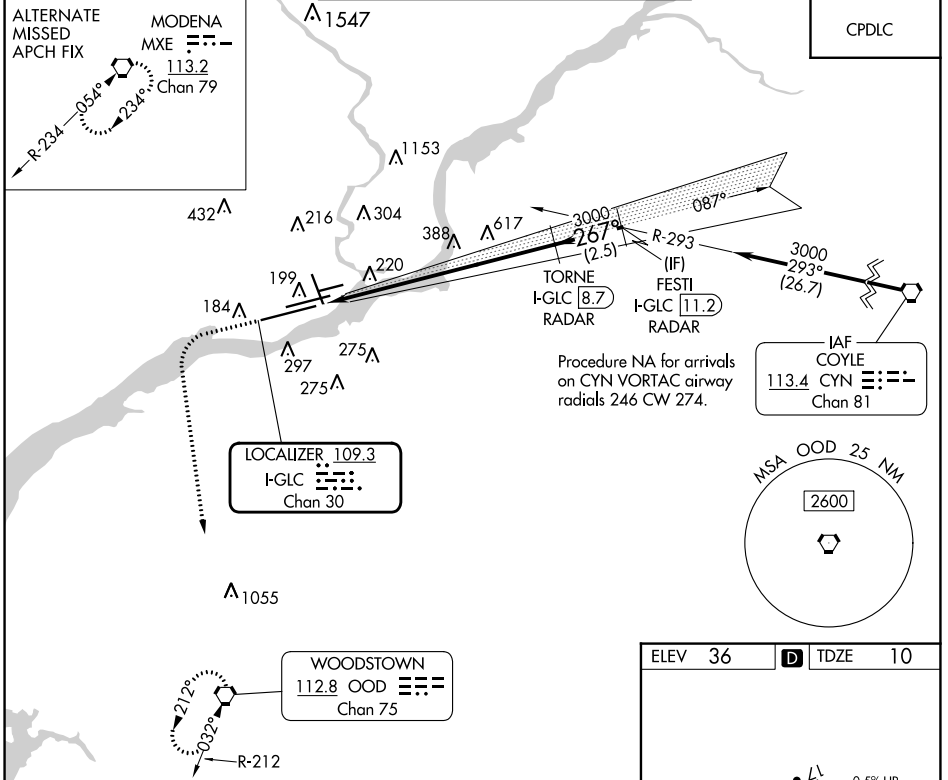
LOC/DME I-GLC <b>109.3</b> Chan <b>30</b>	APP CRS <b>267°</b>	Rwy Idg TDZE Apt Elev	<b>9912</b> <b>10</b> <b>36</b>
---	------------------------	-----------------------------	---------------------------------------

# ILS RWY 27L (SA CAT II)

PHILADELPHIA INTL (PHL)

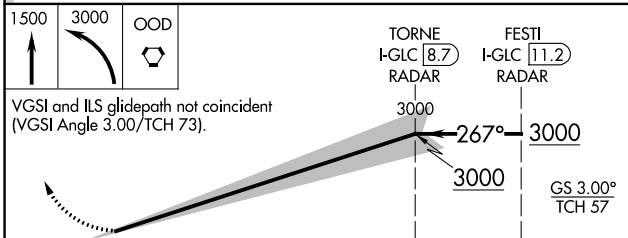
DME or RADAR required.	MALSR	MISSED APPROACH: Climb to 1500 then climbing left turn to 3000 direct OOD VORTAC and hold.
Requires specific OPSPEC, MSPEC, or LOA approval.		

D-ATIS ARR <b>133.4</b> DEP <b>135.925</b>	PHILADELPHIA APP CON <b>124.35 319.15</b>	PHILADELPHIA TOWER <b>118.5 327.05</b> (Rwys 9L/27R, 8/26 and 17/35) <b>135.1 327.05</b> (Rwy 9R/27L)	GND CON <b>121.9 348.6</b>	CLNC DEL <b>118.85 348.6</b>
--	--	---	-------------------------------	---------------------------------



NE-4, 22 FEB 2024 to 21 MAR 2024

NE-4, 22 FEB 2024 to 21 MAR 2024



CATEGORY	A	B	C	D
----------	---	---	---	---

S-ILS 27L	SA CAT II RA 100/12 100 DA 110			
-----------	--------------------------------	--	--	--

ELEV 36	<b>D</b> TDZE 10
---------	------------------

TWR 147

9500 X 150  
12000 X 200

0.5% UP-5000 X 150

## SA CATEGORY II ILS - SPECIAL AIRCREW & AIRCRAFT CERTIFICATION REQUIRED

TDZ/CL Rwy 9R  
HIRL all Rwys  
REIL Rwys 9L and 35