

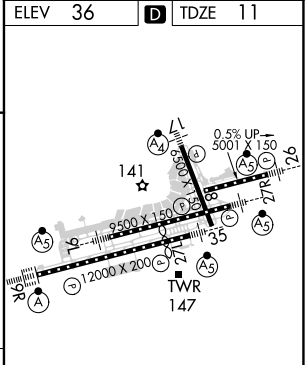
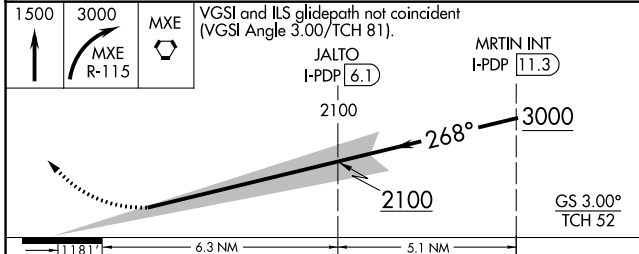
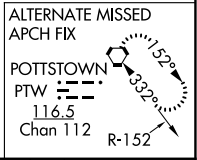
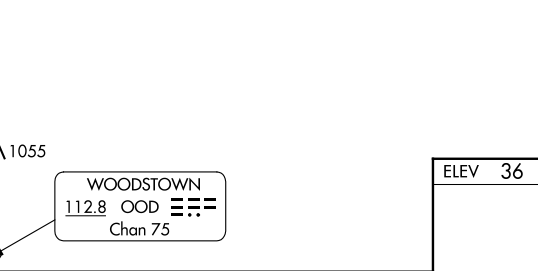
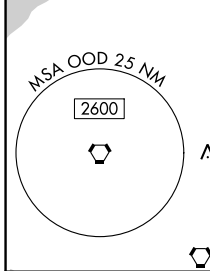
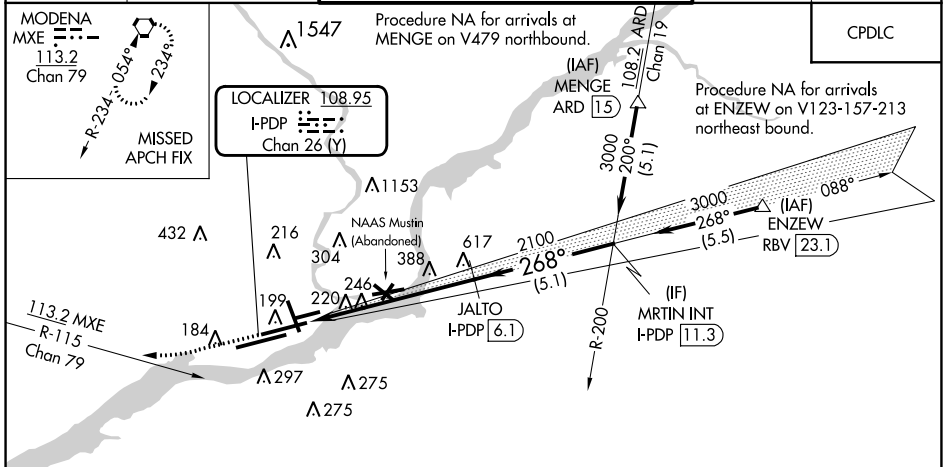
LOC/DME I-PDP <b>108.95</b> Chan 26 (Y)	APP CRS <b>268°</b>	Rwy Idg <b>8864</b> TDZE <b>11</b> Apt Elev <b>36</b>
---	------------------------	---

# ILS RWY 27R (SA CAT I & II)

PHILADELPHIA INTL (PHL)

DME required.	MALSR	MISSED APPROACH: Climb to 1500 then climbing right turn to 3000 on MXE VORTAC R-115 to MXE VORTAC and hold.
▽ SA CAT I: Requires specific OPSPEC, MSPEC or LOA approval and use of HUD to DH. SA CAT II: Reduced lighting: requires specific OPSPEC, MSPEC or LOA approval and use of autoland or HUD to touchdown.		

D-ATIS ARR <b>133.4</b> DEP <b>135.925</b>	PHILADELPHIA APP CON <b>124.35 319.15</b>	PHILADELPHIA TOWER <b>118.5 327.05</b> (Rwys 9L/27R, 8/26 and 17/35) <b>135.1 327.05</b> (Rwy 9R/27L)	GND CON <b>121.9 348.6</b>	CLNC DEL <b>118.85 348.6</b>
--	--	---	-------------------------------	---------------------------------



1181	6.3 NM	5.1 NM		
CATEGORY	A	B	C	D
S-ILS 27R	SA CAT I RA 157/14 150 DA 161			
S-ILS 27R	SA CAT II RA 102/12 100 DA 111			

GS 3.00° TCH 52

TDZ/CL Rwy 9R  
HIRL all Rwys  
REIL Rwys 9L and 35

## SA CATEGORY I & II ILS - SPECIAL AIRCREW & AIRCRAFT CERTIFICATION REQUIRED

NE-4, 22 FEB 2024 to 21 MAR 2024

NE-4, 22 FEB 2024 to 21 MAR 2024