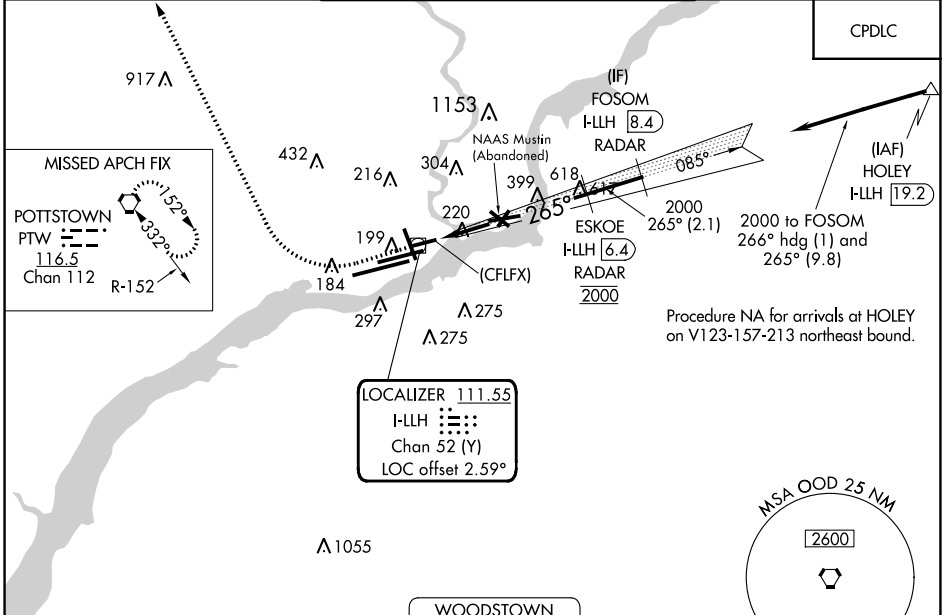


LOC/DME I-LLH <b>111.55</b>	APP CRS <b>265°</b>	Rwy Idg TDZE Apt Elev	<b>5001</b> <b>36</b> <b>36</b>
Chan <b>52 (Y)</b>			

# ILS or LOC RWY 26

PHILADELPHIA INTL (PHL)

DME or RADAR required.		MALSR	MISSED APPROACH: Climb to 800 then climbing right turn to 3000 direct PTW VORTAC and hold.	
<p>▼ For inop ALS, increase S-ILS all Cats visibility to RVR 4500 and S-LOC Cats A and B visibility to RVR 5500 and Cat C to 1 1/8 SM.          ▲ Rwy 26 helicopter visibility reduction below RVR 4000 NA.</p>				
D-ATIS ARR <b>133.4</b> DEP <b>135.925</b>	PHILADELPHIA APP CON <b>124.35 319.15</b>	PHILADELPHIA TOWER <b>118.5 327.05</b> (Rwys 9L/27R, 8/26 and 17/35) <b>135.1 327.05</b> (Rwy 9R/27L)	GND CON <b>121.9 348.6</b>	CLNC DEL <b>118.85 348.6</b>



ELEV 36	<b>D</b>	TDZE 36			
<p>800 3000 PTW</p> <p>*LOC only.</p> <p>*I-LLH [2.5]</p> <p>(CFLFX) I-LLH [0.6]</p> <p>ESKOE I-LLH [6.4] RADAR 2000</p> <p>FOSOM I-LLH [8.4] RADAR 2000</p> <p>GS 3.15° TCH 50</p>					
<p>TDZ/CL Rwy 9R HIRL all Rwys REIL Rwys 9L and 35</p> <p>FAF to MAP 5.7 NM</p>					
Knots	60	90	120	150	180
Min:Sec	5:42	3:48	2:51	2:17	1:54
<p>☑ CIRCLING</p>					

	1.8 NM	3.9 NM	2.1 NM	
CATEGORY	A	B	C	D
S-ILS 26	299/40 263 (300-3/4)			NA
S-LOC 26	700/40	664 (700-3/4)	700-1 1/2 664 (700-1 1/2)	NA
CIRCLING	700-1	664 (700-1)	700-1 7/8 664 (700-1 7/8)	NA

NE-4, 22 FEB 2024 to 21 MAR 2024

NE-4, 22 FEB 2024 to 21 MAR 2024