

20086

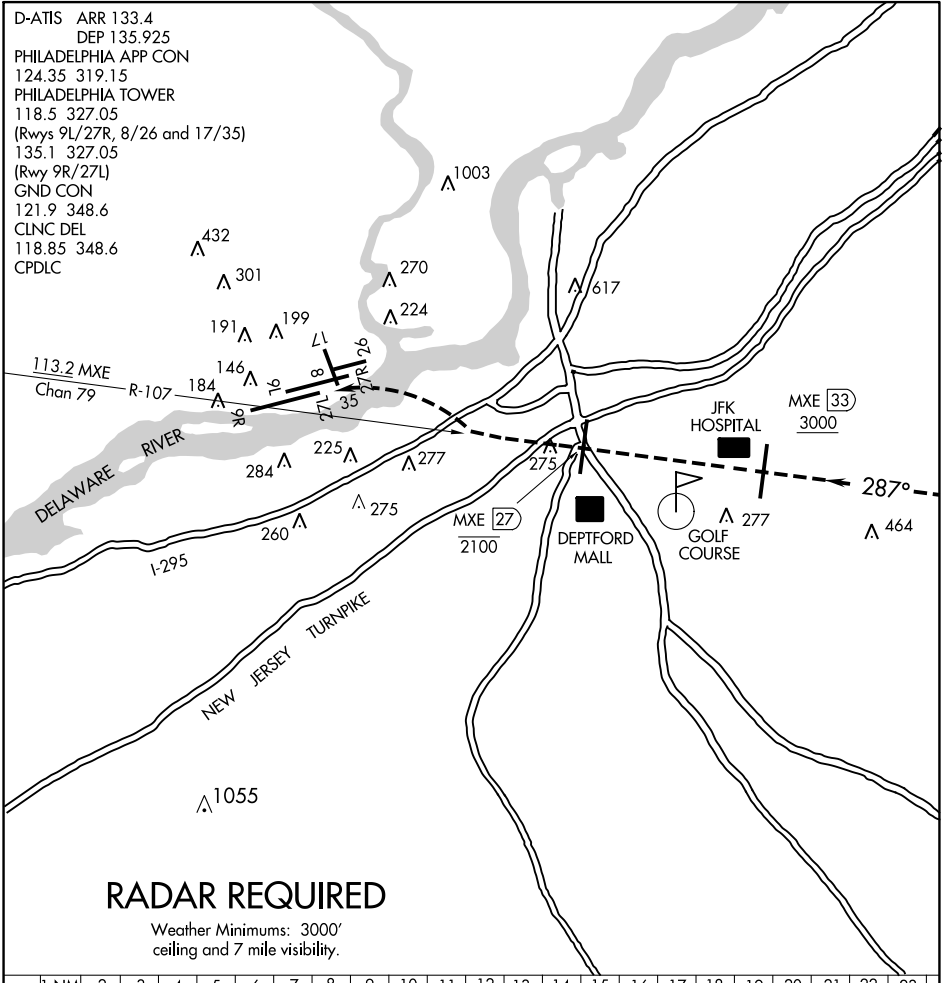
LIBERTY VISUAL RWY 27L

AL-320 (FAA)

PHILADELPHIA INTL (PHL)

PHILADELPHIA, PENNSYLVANIA

D-ATIS ARR 133.4
 DEP 135.925
 PHILADELPHIA APP CON
 124.35 319.15
 PHILADELPHIA TOWER
 118.5 327.05
 (Rwys 9L/27R, 8/26 and 17/35)
 135.1 327.05
 (Rwy 9R/27L)
 GND CON
 121.9 348.6
 CLNC DEL
 118.85 348.6
 CPDLC



RADAR REQUIRED

Weather Minimums: 3000'
 ceiling and 7 mile visibility.

1	2	3	4	5	6	7	8	9	10	11	12	13	14	15	16	17	18	19	20	21	22	23
---	---	---	---	---	---	---	---	---	----	----	----	----	----	----	----	----	----	----	----	----	----	----

LIBERTY VISUAL RWY 27L

- Expect RADAR vectors to the MXE R-107.
- Proceed Northwest on the MXE R-107 inbound for Rwy 27L.
- Report the airport in sight to final controller.
- Aircraft must remain on the MXE R-107 until the MXE R-107/27 DME; then proceed visually to Rwy 27L or as assigned by the tower.
- Expect aircraft to be utilizing a simultaneous visual or ILS approach to Rwy 27R during this operation.

LIBERTY VISUAL RWY 27L

39°52'N-75°14'W

PHILADELPHIA, PENNSYLVANIA

PHILADELPHIA INTL (PHL)

Orig 23APR98

NE-4, 22 FEB 2024 to 21 MAR 2024

NE-4, 22 FEB 2024 to 21 MAR 2024