
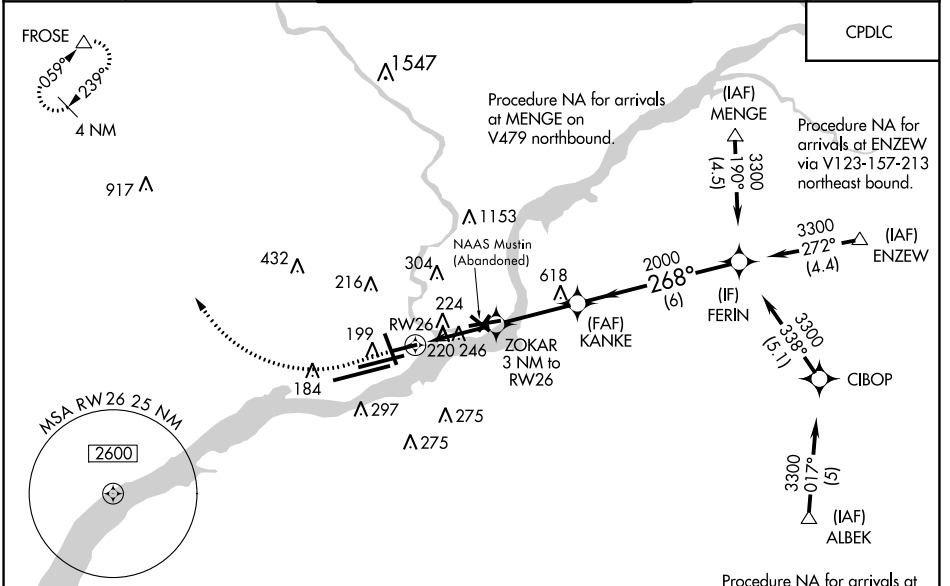


WAAS CH 78117	APP CRS 268°	Rwy Idg TDZE 36	5001
W26A		Apt Elev 36	

RNAV (GPS) RWY 26

PHILADELPHIA INTL (PHL)

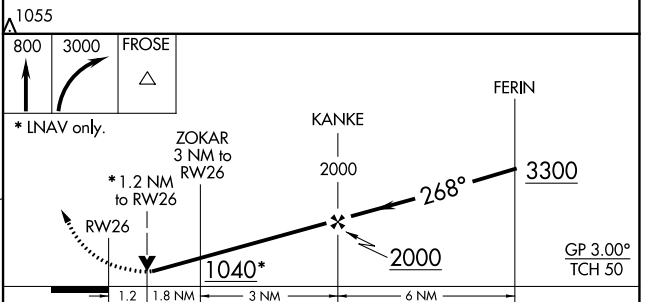
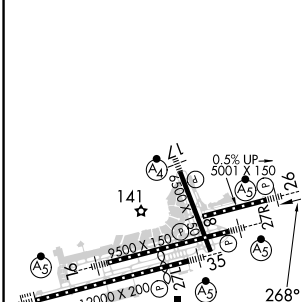
RNP APCH		<p>▼ For uncompensated Baro-VNAV systems, LNAV/VNAV NA below -12°C or above 54°C. For inop ALS, increase LPV all Cats visibility 3/8 SM, increase LNAV Cats A and B to RVR 5500. Simultaneous approach authorized. LNAV procedure NA during simultaneous operations. Use of FD or AP providing RNAV track guidance required during simultaneous operations. Rwy 26 helicopter visibility reduction below RVR 4000 NA.</p>		<p>MALSRL</p> 		<p>MISSED APPROACH: Climb to 800 then climbing right turn to 3000 direct FROSE and hold.</p>	
D-ATIS ARR 133.4 DEP 135.925	PHILADELPHIA APP CON 124.35 319.15	<p>PHILADELPHIA TOWER 118.5 327.05 (Rwys 9L/27R, 8/26 and 17/35) 135.1 327.05 (Rwy 9R/27L)</p>		<p>GND CON 121.9 348.6</p>		<p>CLNC DEL 118.85 348.6</p>	



NE-4, 22 FEB 2024 to 21 MAR 2024

NE-4, 22 FEB 2024 to 21 MAR 2024

ELEV 36	D	TDZE 36
---------	----------	---------



CATEGORY	A	B	C	D
LPV DA		513/60	477 (500-1¼)	
LNAV/VNAV DA		573-1⅜	537 (600-1⅝)	
LNAV MDA	540/40	504 (600-¾)	540/55	504 (600-1)
C CIRCLING	540-1 504 (600-1)	600-1 564 (600-1)	620-1½ 584 (600-1½)	720-2¼ 684 (700-2¼)

TDZ/CL Rwy 9R
HIRL all Rwys
REIL Rwys 9L and 35