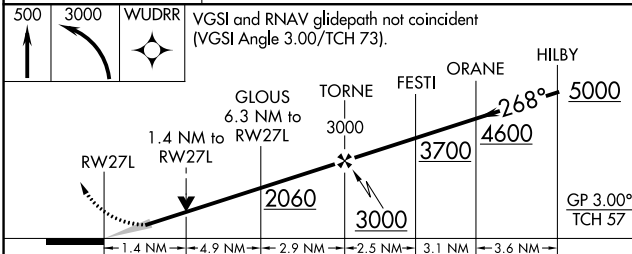
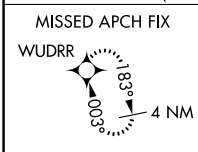
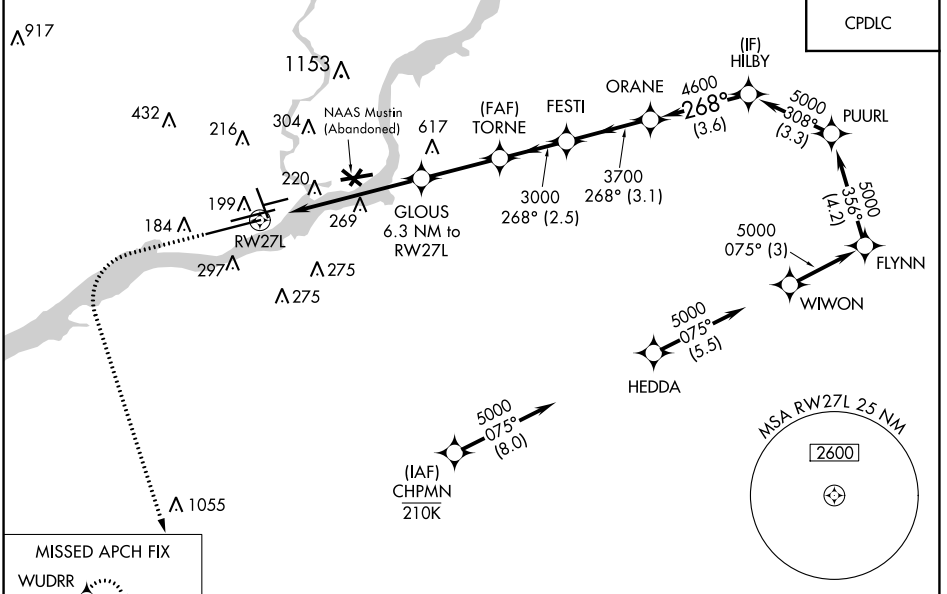


WAAS CH <b>97322</b>	APP CRS <b>268°</b>	Rwy Idg TDZE Apt Elev	<b>9912</b> <b>10</b> <b>36</b>
-------------------------	------------------------	-----------------------------	---------------------------------------

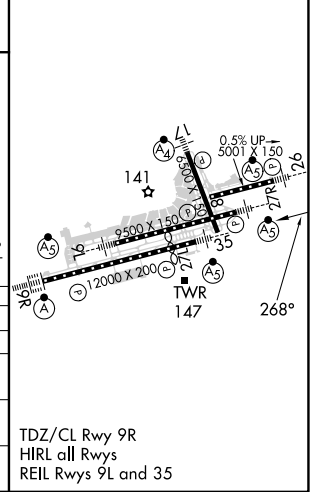
# RNAV (GPS) RWY 27L

PHILADELPHIA INTL (PHL)

RNP APCH - GPS.		MALSR 	MISSED APPROACH: Climb to 500 then climbing left turn to 3000 direct WUDRR and hold.	
<p><b>▽</b> For uncompensated Baro-VNAV systems, LNAV/VNAV NA below -11°C or above 54°C. For inop ALS, increase LNAV/VNAV all Cats visibility to RVR 6000. * RVR 1800 authorized with use of FD or AP or HUD to DA.</p>				
D-ATIS ARR <b>133.4</b> DEP <b>135.925</b>	PHILADELPHIA APP CON <b>124.35 319.15</b>	PHILADELPHIA TOWER <b>118.5 327.05</b> (Rwys 9L/27R, 8/26 and 17/35) <b>135.1 327.05</b> (Rwy 9R/27L)		GND CON <b>121.9 348.6</b>
				CLNC DEL <b>118.85 348.6</b>



ELEV 36	<b>D</b> TDZE 10
---------	------------------



CATEGORY	A	B	C	D
LPV DA*	210/24		200 (200-1/2)	
LNAV/DA VNAV	422/40		412 (400-3/4)	
LNAV MDA	540/24	530 (600-1/2)	540/55	530 (600-1)
<b>C</b> CIRCLING	540-1 504 (600-1)	600-1 564 (600-1)	620-1 1/2 584 (600-1/2)	720-2 1/4 684 (700-2/4)

TDZ/CL Rwy 9R  
HIRL all Rwys  
REIL Rwys 9L and 35

NE-4, 22 FEB 2024 to 21 MAR 2024

NE-4, 22 FEB 2024 to 21 MAR 2024