

APP CRS	Rwy Idg	<b>12000</b>
<b>087°</b>	TDZE	<b>21</b>
	Apt Elev	<b>36</b>

# RNAV (RNP) Z RWY 9R

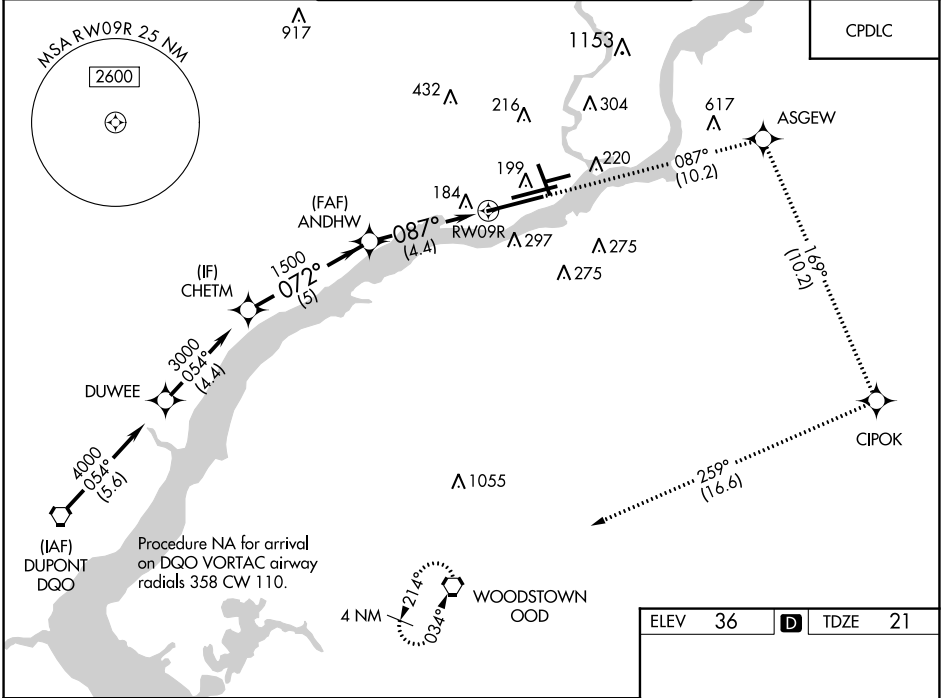
PHILADELPHIA INTL (PHL)

**▽** For uncompensated Baro-VNAV systems, procedure NA below -12°C or above 54°C. For inop ALS, increase RNP 0.16 all Cats visibility to RVR 4500 and RNP 0.30 all Cats visibility to 1½ SM.

ALSF-2

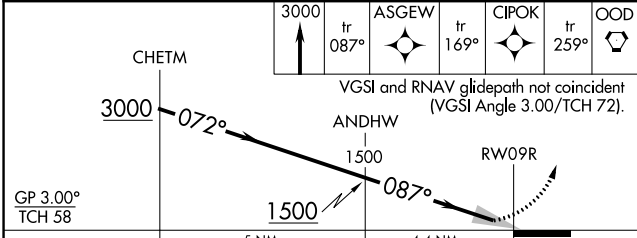
MISSED APPROACH: Climb to 3000 on track 087° to ASGEW and on track 169° to CIPOK, and on track 259° to OOD VORTAC and hold.

D-ATIS	PHILADELPHIA APP CON	PHILADELPHIA TOWER	GND CON	CLNC DEL
ARR <b>133.4</b>	<b>124.35 319.15</b>	<b>118.5 327.05</b> (Rwys 9L/27R, 8/26 and 17/35)	<b>121.9 348.6</b>	<b>118.85 348.6</b>
DEP <b>135.925</b>		<b>135.1 327.05</b> (Rwy 9R/27L)		

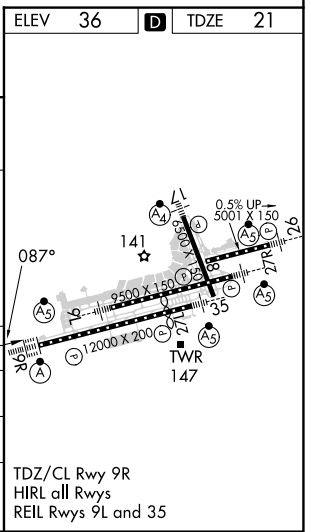


NE-4, 22 FEB 2024 to 21 MAR 2024

NE-4, 22 FEB 2024 to 21 MAR 2024



CATEGORY	A	B	C	D
RNP 0.16 DA		424/40	403 (400-¾)	
RNP 0.30 DA		461/50	440 (500-1)	



**AUTHORIZATION REQUIRED**