

WAAS CH 45523 W09B	APP CRS 087°	Rwy Idg TDZE 13 Apt Elev 36	9500
--	------------------------	---	-------------

RNAV (GPS) Y RWY 9L

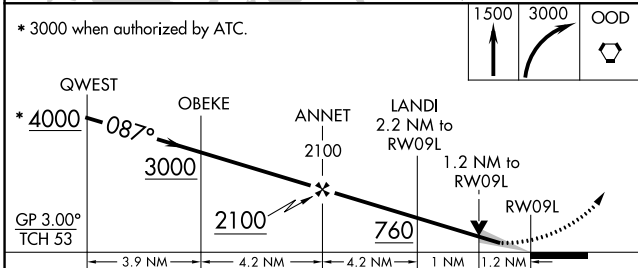
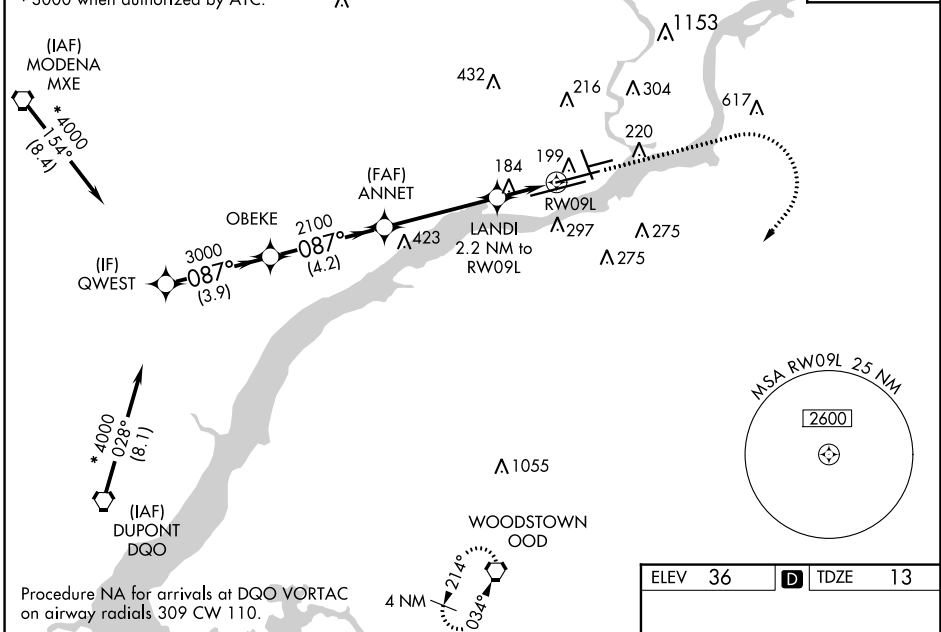
PHILADELPHIA INTL (PHL)

RNP APCH - GPS.	MALSR 	MISSED APPROACH: Climb to 1500, then climbing right turn to 3000 direct OOD VORTAC and hold.
For uncompensated Baro-VNAV systems, LNAV/VNAV NA below -12°C or above 54°C. For inop ALS, increase LNAV/VNAV visibility to RVR 4500, all Cats. # RVR 1800 authorized with use of FD or AP or HUD to DA.		

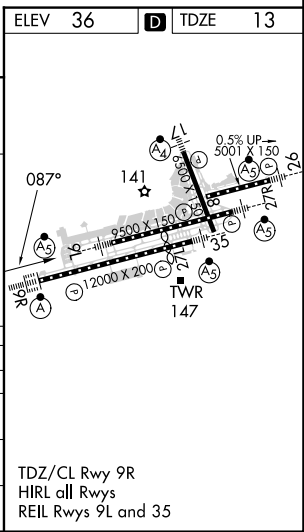
D-ATIS ARR 133.4 DEP 135.925	PHILADELPHIA APP CON 124.35 319.15	PHILADELPHIA TOWER 118.5 327.05 (Rwys 9L/27R, 8/26 and 17/35) 135.1 327.05 (Rwy 9R/27L)	GND CON 121.9 348.6	CLNC DEL 118.85 348.6
--	--	---	-------------------------------	---------------------------------

Procedure NA for arrivals at MXE VORTAC on airway radials 129 CW 177.
* 3000 when authorized by ATC.

CPDLC



CATEGORY	A		B		C		D	
LPV DA #			213/24		200 (200-½)			
LNAV/VNAV DA			325/24		312 (300-½)			
LNAV MDA	440/24		427 (500-½)		440/40		427 (500-¾)	
CIRCLING	540-1		600-1		620-1½		720-2¼	
	504 (600-1)		564 (600-1)		584 (600-1½)		684 (700-2¼)	



NE-4, 22 FEB 2024 to 21 MAR 2024

NE-4, 22 FEB 2024 to 21 MAR 2024