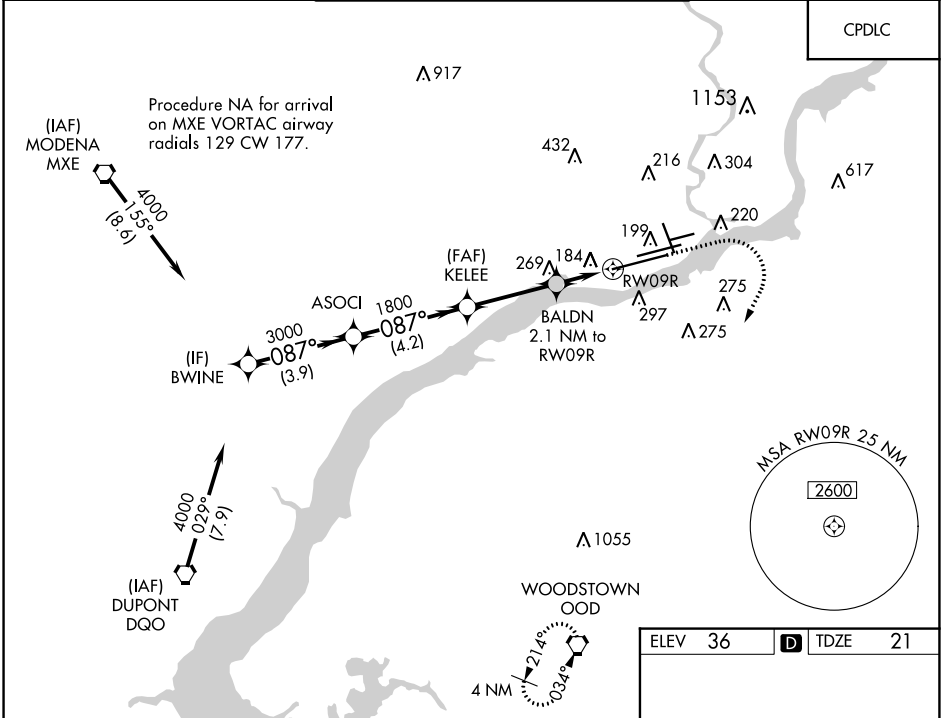


WAAS CH 40023 W09A	APP CRS 087°	Rwy Idg TDZE 21 Apt Elev 36	12000
----------------------------------------	------------------------	-------------------------------------------------	--------------

RNAV (GPS) Y RWY 9R

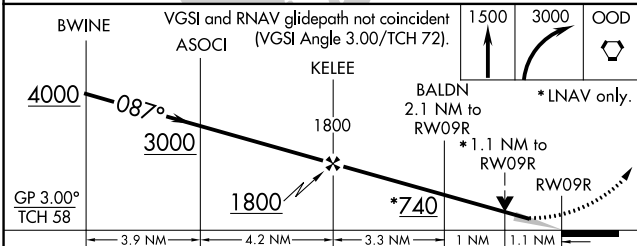
PHILADELPHIA INTL (PHL)

<p>▼ For uncompensated Baro-VNAV systems, LNAV/VNAV NA below -12°C (11°F) or above 54°C (130°F). DME/DME RNP-0.3 NA. ▲ For inop ALS, increase LNAV/VNAV visibility all Cats to RVR 5000 and LNAV Cats C/D visibility to RVR 6000.</p>	<p>ALSF-2</p>	<p>MISSED APPROACH: Climb to 1500 then climbing right turn to 3000 direct OOD VORTAC and hold.</p>		
			<p>D-ATIS ARR 133.4 DEP 135.925</p>	<p>PHILADELPHIA APP CON 124.35 319.15</p>



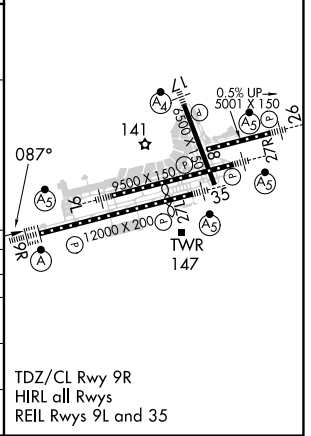
NE-4, 22 FEB 2024 to 21 MAR 2024

NE-4, 22 FEB 2024 to 21 MAR 2024



ELEV 36	D TDZE 21
----------------	-------------------------

CATEGORY	A	B	C	D
LPV DA		221/18	200 (200-½)	
LNAV/VNAV DA		346/30	325 (400-¾)	
LNAV MDA	440/24	419 (500-½)	440/40	419 (500-¾)
CIRCLING	540-1	640-1	640-1¾	720-2¼
	504 (600-1)	604 (700-1)	604 (700-1¾)	684 (700-2¼)



TDZ/CL Rwy 9R
HIRL all Rwys
REIL Rwys 9L and 35