

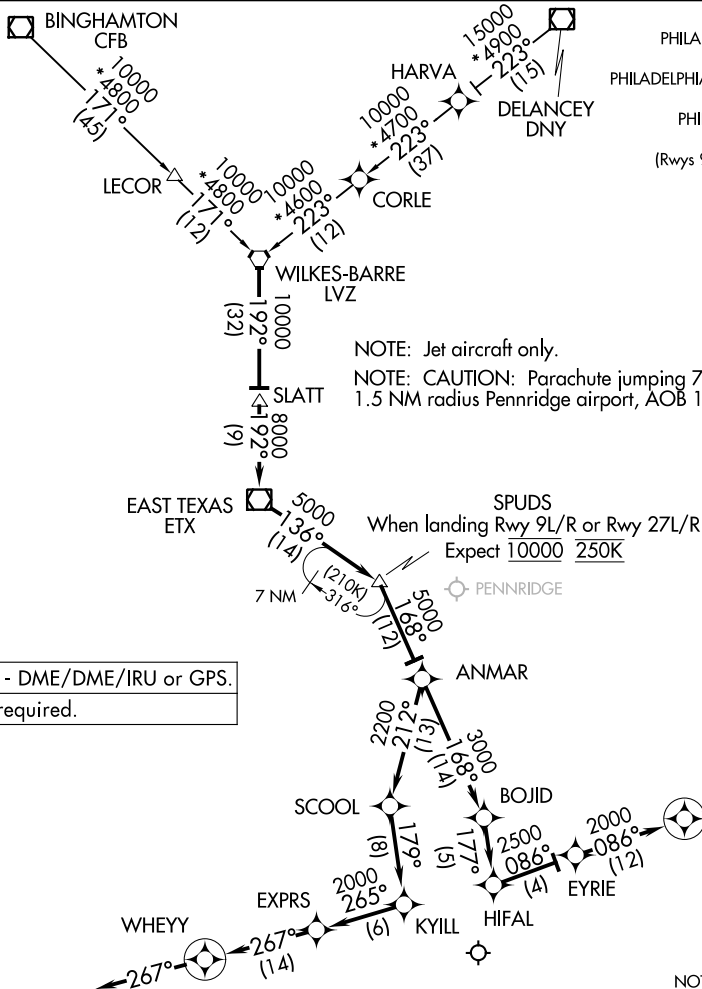
(LVZ.SPUDS7) 23334

AL-320 (FAA)

# SPUDS SEVEN ARRIVAL (RNAV)

PHILADELPHIA INTL (PHL)  
PHILADELPHIA, PENNSYLVANIA

D-ATIS 133.4  
 PHILADELPHIA APP CON 128.4 272.575  
 PHILADELPHIA FINAL CONTROL 125.4  
 PHILADELPHIA TOWER 118.5 327.05  
 (Rwys 9L/27R and 17/35) 135.1 327.05  
 (Rwy 9R/27L) GND CON 121.9 348.6



NOTE: Jet aircraft only.

NOTE: CAUTION: Parachute jumping 7 NM SE SPUDS, 1.5 NM radius Pennridge airport, AOB 14500 (SR-SS).

RNAV 1 - DME/DME/IRU or GPS.  
 RADAR required.

NOTE: Chart not to scale.

## ARRIVAL ROUTE DESCRIPTION

**BINGHAMTON TRANSITION (CFB.SPUDS7):**

**DELANCEY TRANSITION (DNY.SPUDS7):**

From LVZ VORTAC on track 192° to SLATT, then on track 192° to ETX VOR/DME, then on track 136° to SPUDS, then on track 168° to ANMAR then...

**LANDING RUNWAY 27L/R:** Then from ANMAR on track 168° to BOJID. Then on track 177° to HIFAL, then on track 086° to EYRIE. Then on track 086° to FERUS, then on heading 086°. Expect RADAR vectors to final approach course.

**LANDING RUNWAY 9L/R:** Then from ANMAR on track 212° to SCOO, then on track 179° to KYILL, then on track 265° to EXPRS. Then on track 267° to WHEYY, then on heading 267°. Expect RADAR vectors to final approach course.

# SPUDS SEVEN ARRIVAL (RNAV)

(LVZ.SPUDS7) 30NOV23

PHILADELPHIA, PENNSYLVANIA  
PHILADELPHIA INTL (PHL)

NE-4, 22 FEB 2024 to 21 MAR 2024

NE-4, 22 FEB 2024 to 21 MAR 2024