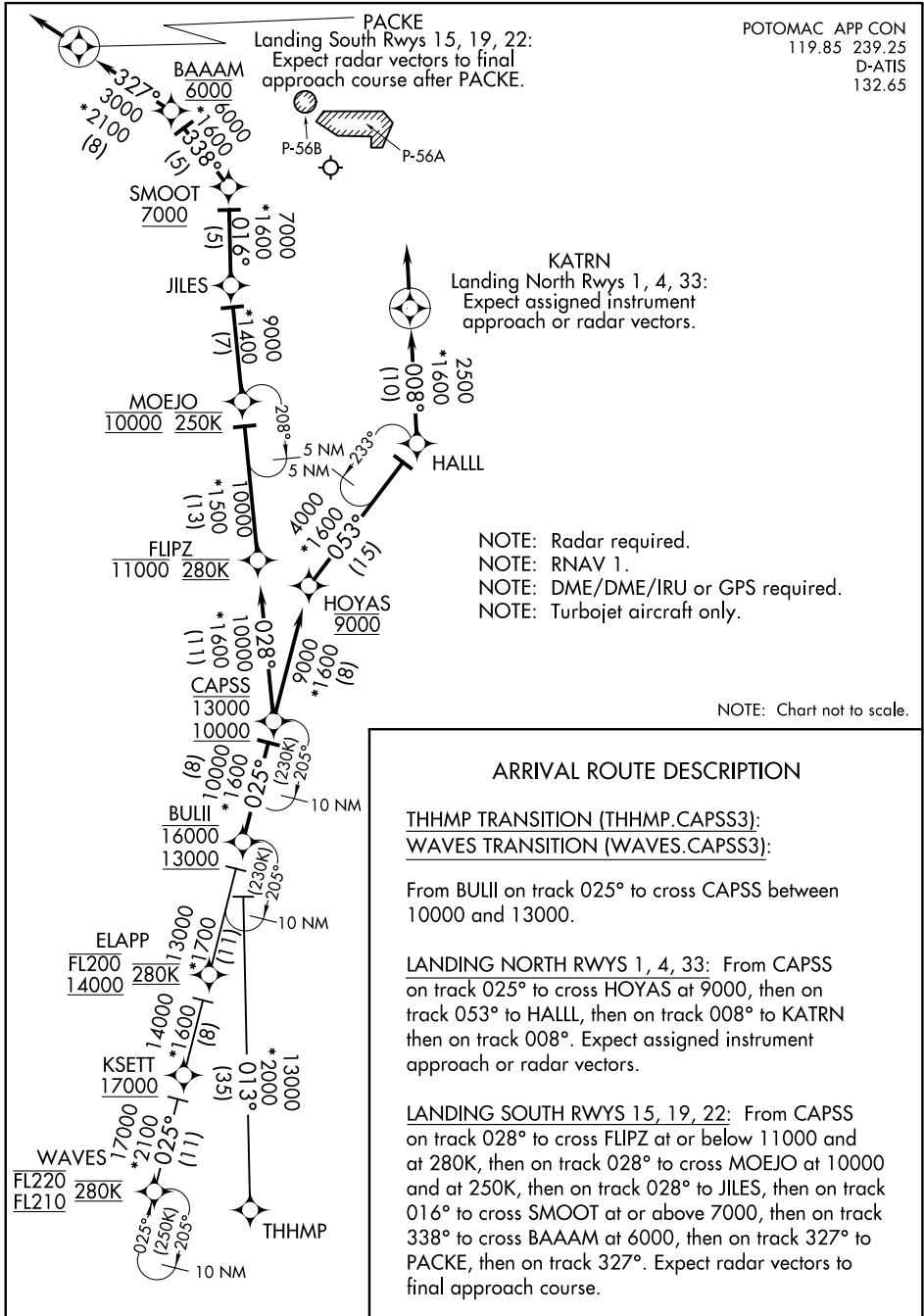


POTOMAC APP CON
119.85 239.25
D-ATIS
132.65



KATRNR
Landing North Rwy 1, 4, 33:
Expect assigned instrument approach or radar vectors.

PACKE
Landing South Rwy 15, 19, 22:
Expect radar vectors to final approach course after PACKE.

- NOTE: Radar required.
- NOTE: RNAV 1.
- NOTE: DME/DME/IRU or GPS required.
- NOTE: Turbojet aircraft only.

NOTE: Chart not to scale.

ARRIVAL ROUTE DESCRIPTION

THHMP TRANSITION (THHMP.CAPSS3):
WAVES TRANSITION (WAVES.CAPSS3):

From BULII on track 025° to cross CAPSS between 10000 and 13000.

LANDING NORTH RWYS 1, 4, 33: From CAPSS on track 025° to cross HOYAS at 9000, then on track 053° to HALLL, then on track 008° to KATRNR then on track 008°. Expect assigned instrument approach or radar vectors.

LANDING SOUTH RWYS 15, 19, 22: From CAPSS on track 028° to cross FLIPZ at or below 11000 and at 280K, then on track 028° to cross MOEJO at 10000 and at 250K, then on track 028° to JILES, then on track 016° to cross SMOOT at or above 7000, then on track 338° to cross BAAAM at 6000, then on track 327° to PACKE, then on track 327°. Expect radar vectors to final approach course.

NE-3, 22 FEB 2024 to 21 MAR 2024

NE-3, 22 FEB 2024 to 21 MAR 2024