

LOC/DME I-DCA	APP CRS	Rwy Idg	6869
109.9	007°	TDZE	14
Chan 36		Apt Elev	14

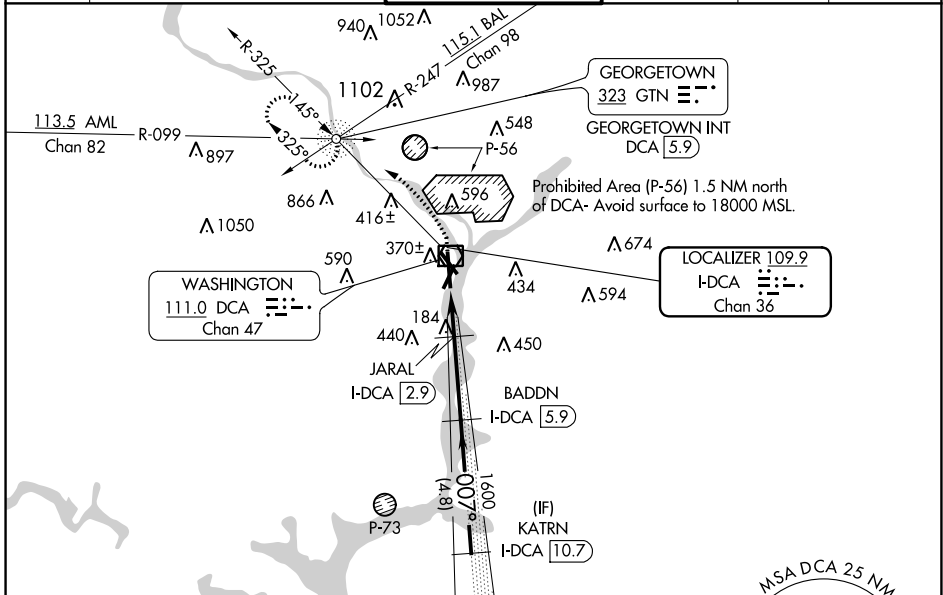
ILS or LOC RWY 1
RONALD REAGAN WASHINGTON NTL (DCA)

DME required. RADAR required for procedure entry.

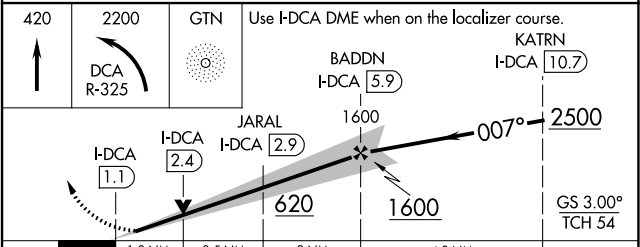
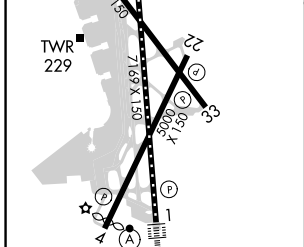
ALSIF-2 MISSED APPROACH: Climb to 420 then climbing left turn to 2200 on DCA VOR/DME R-325 to GTN NDB/INT/DCA 5.9 DME and hold.

⚠ Circling NA northeast of Rwy 15-33. For inop ALS, increase S-LOC 1 Cats C and D visibility to 1 3/8 SM.

D-ATIS	POTOMAC APP CON	WASHINGTON TOWER	GND CON	CLNC DEL	CPDLC
132.65	119.85 239.25 (WEST/SOUTH) 124.2 360.8 (EAST)	119.1 257.6	121.7 257.6	128.25	



ELEV 14	D	TDZE 14
REIL Rwys 4, 15, 22 and 33		
HIRL Rwys 1-19 and 15-33		
MIRL Rwy 4-22		
TDZ/CL Rwy 1		



FAF to MAP 4.8 NM																													
Knots	60	90	120	150	180																								
Min:Sec	4:48	3:12	2:24	1:55	1:36																								
C CIRCLING	<table border="1"> <tr> <th>CATEGORY</th> <th>A</th> <th>B</th> <th>C</th> <th>D</th> </tr> <tr> <td>S-ILS 1</td> <td colspan="4">214/18 200 (200-1/2)</td> </tr> <tr> <td>S-LOC 1</td> <td>480/24</td> <td>466 (500-1/2)</td> <td>480/50</td> <td>466 (500-1)</td> </tr> <tr> <td></td> <td>720-1</td> <td>900-1 1/4</td> <td>900-2 3/4</td> <td>900-3</td> </tr> <tr> <td></td> <td>706 (800-1)</td> <td>886 (900-1 1/4)</td> <td>886 (900-2 3/4)</td> <td>886 (900-3)</td> </tr> </table>				CATEGORY	A	B	C	D	S-ILS 1	214/18 200 (200-1/2)				S-LOC 1	480/24	466 (500-1/2)	480/50	466 (500-1)		720-1	900-1 1/4	900-2 3/4	900-3		706 (800-1)	886 (900-1 1/4)	886 (900-2 3/4)	886 (900-3)
CATEGORY	A	B	C	D																									
S-ILS 1	214/18 200 (200-1/2)																												
S-LOC 1	480/24	466 (500-1/2)	480/50	466 (500-1)																									
	720-1	900-1 1/4	900-2 3/4	900-3																									
	706 (800-1)	886 (900-1 1/4)	886 (900-2 3/4)	886 (900-3)																									

NE-3, 22 FEB 2024 to 21 MAR 2024

NE-3, 22 FEB 2024 to 21 MAR 2024