

(JDUBB4.JDUBB) 21112

**JDUBB FOUR DEPARTURE (RNAV)** AL-443 (FAA)

RONALD REAGAN WASHINGTON NTL (DCA)  
WASHINGTON, DC

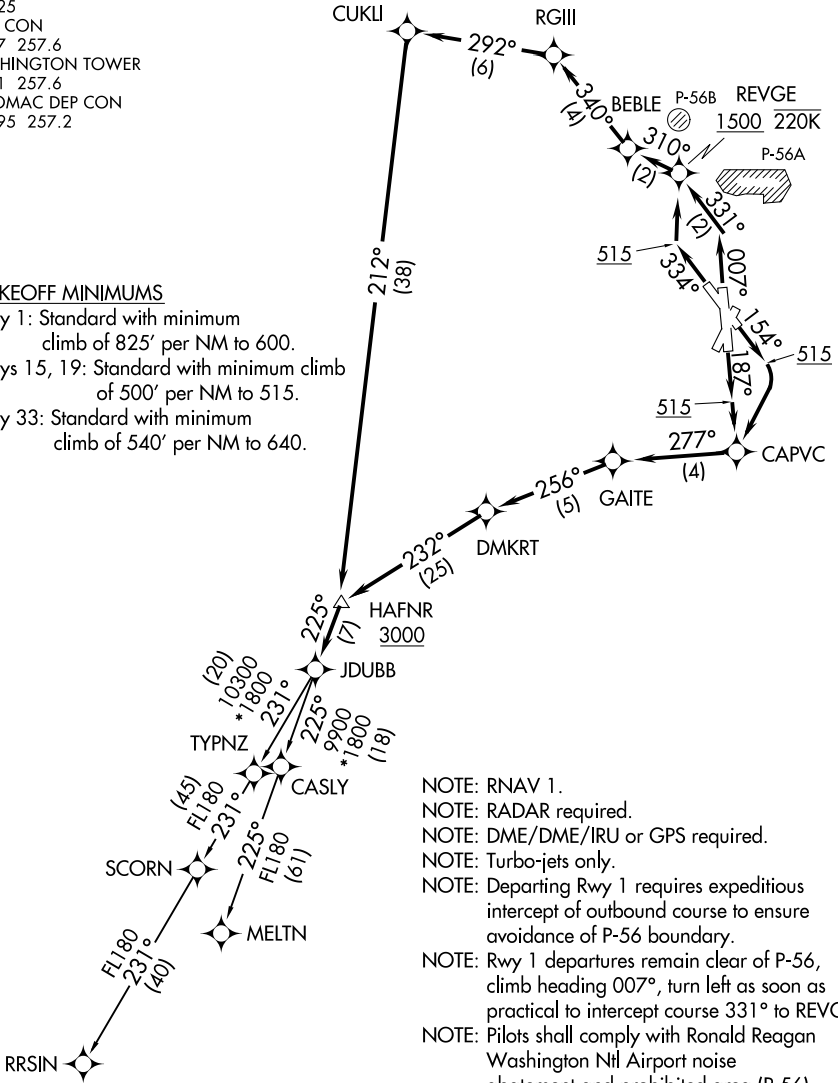
**TOP ALTITUDE:  
5000**

D-ATIS  
132.65  
CLNC DEL  
128.25  
GND CON  
121.7 257.6  
WASHINGTON TOWER  
119.1 257.6  
POTOMAC DEP CON  
118.95 257.2

TAKEOFF MINIMUMS

Rwy 1: Standard with minimum climb of 825' per NM to 600.  
Rwys 15, 19: Standard with minimum climb of 500' per NM to 515.  
Rwy 33: Standard with minimum climb of 540' per NM to 640.

NE-3, 22 FEB 2024 to 21 MAR 2024



- NOTE: RNAV 1.
- NOTE: RADAR required.
- NOTE: DME/DME/IRU or GPS required.
- NOTE: Turbo-jets only.
- NOTE: Departing Rwy 1 requires expeditious intercept of outbound course to ensure avoidance of P-56 boundary.
- NOTE: Rwy 1 departures remain clear of P-56, climb heading 007°, turn left as soon as practical to intercept course 331° to REVGE.
- NOTE: Pilots shall comply with Ronald Reagan Washington Ntl Airport noise abatement and prohibited area (P-56) avoidance procedures as defined in the Chart Supplement special notices.
- NOTE: If unable to accept climb rate advise ATC on initial contact.

(NARRATIVE ON FOLLOWING PAGE)

NOTE: Chart not to scale.

**JDUBB FOUR DEPARTURE (RNAV)**  
(JDUBB4.JDUBB) 31DEC20

WASHINGTON, DC  
RONALD REAGAN WASHINGTON NTL (DCA)

NE-3, 22 FEB 2024 to 21 MAR 2024