

LOC/DME I-VVWH 108.5 Chan 22	APP CRS 147°	Rwy Idg 6869 TDZE 13 Apt Elev 14
--	------------------------	---

LDA Z RWY 19

RONALD REAGAN WASHINGTON NTL (DCA)

⚠ Inop table does not apply. Circling NA northeast of Rwy 15-33. Rwy 19 helicopter visibility reduction below 1 SM NA. DME required.

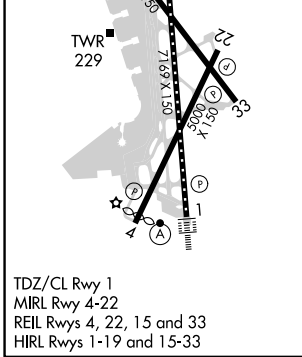
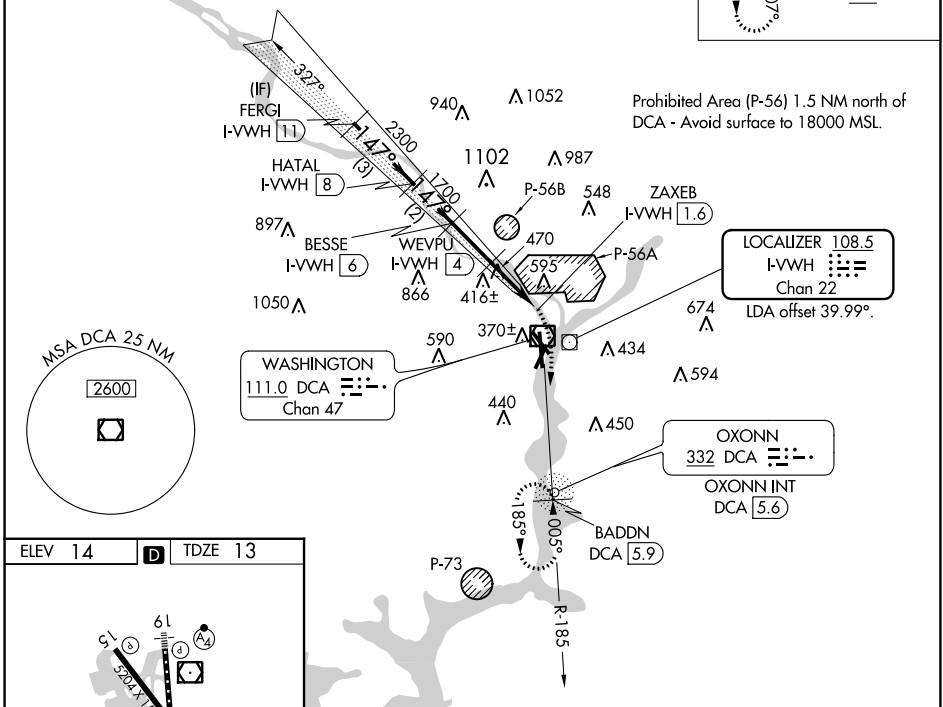
MALSF
MISSED APPROACH: Climbing right turn to 3000 on DCA VOR/DME R-185 to BADDN/DCA VOR/DME 5.9 DME and hold, continue climb-in-hold to 3000.

D-ATIS 132.65	POTOMAC APP CON 119.85 239.25 360.8 (WEST/SOUTH) (EAST)	WASHINGTON TOWER 119.1 257.6	GND CON 121.7 257.6	CLNC DEL 128.25	CPDLC
-------------------------	---	--	-------------------------------	---------------------------	-------

ALTERNATE MISSED APCH FIX

OXONN
DCA **332**
332

RADAR REQUIRED



	FERG1 I-VVWH 11	HATAL I-VVWH 8	BESSE I-VVWH 6	WEVPU I-VVWH 4	ZAXEB I-VVWH 1.6	3000 DCA R-185	BADDN DCA 5.9
	3000	2300	1700	1100			
	3 NM	2 NM	2 NM	2.4 NM	0.8		
CATEGORY	A		B		C		D
S-19	720/55		707 (800-1)		720-2		707 (800-2)
C CIRCLING	720-1		706 (800-1)		840-1½ 826 (900-1½)		900-3 886 (900-3)

LDA Z RWY 19

NE-3, 22 FEB 2024 to 21 MAR 2024

NE-3, 22 FEB 2024 to 21 MAR 2024