

SCRAM SIX DEPARTURE (RNAV)

AL-443 (FAA)

WASHINGTON, DC

NE-3, 22 FEB 2024 to 21 MAR 2024

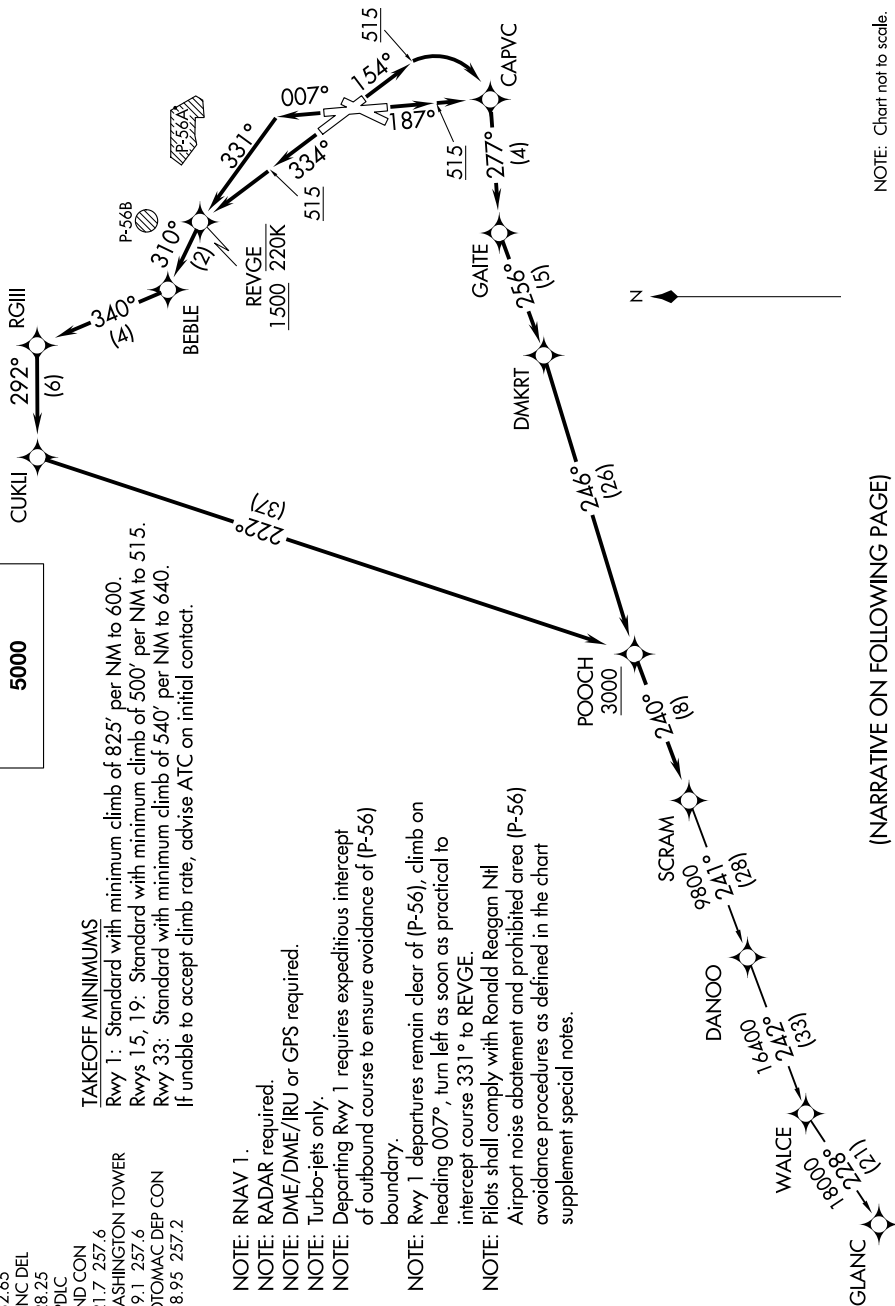
**TOP ALTITUDE:
5000**

D-ATIS 132.65
 CLINC DEL 128.25
 GPBLC
 GND CON 121.7 257.6
 WASHINGTON TOWER 119.1 257.6
 POTOMAC DEP CON 118.95 257.2

TAKEOFF MINIMUMS

Rwy 1: Standard with minimum climb of 825' per NM to 600.
 Rwys 15, 19: Standard with minimum climb of 500' per NM to 515.
 Rwy 33: Standard with minimum climb of 540' per NM to 640.
 If unable to accept climb rate, advise ATC on initial contact.

- NOTE: RNAV 1.
- NOTE: RADAR required.
- NOTE: DME/DME/IRU or GPS required.
- NOTE: Turbo-jets only.
- NOTE: Departing Rwy 1 requires expeditious intercept of outbound course to ensure avoidance of (P-56) boundary.
- NOTE: Rwy 1 departures remain clear of (P-56), climb on heading 007°, turn left as soon as practical to intercept course 331° to REVEGE.
- NOTE: Pilots shall comply with Ronald Reagan NII Airport noise abatement and prohibited area (P-56) avoidance procedures as defined in the chart supplement special notes.



NOTE: Chart not to scale.

(NARRATIVE ON FOLLOWING PAGE)

NE-3, 22 FEB 2024 to 21 MAR 2024