

APP CRS	Rwy Idg	<b>5107</b>
<b>233°</b>	TDZE	<b>128</b>
	Apt Elev	<b>132</b>

# RNAV (GPS) RWY 23

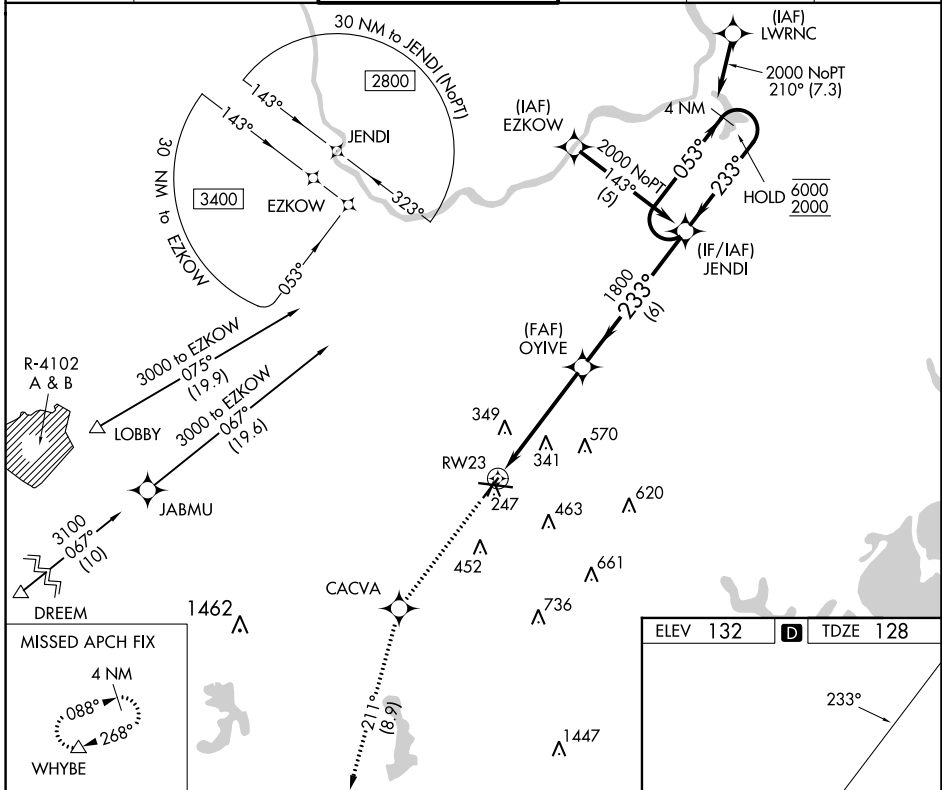
LAURENCE G HANSCOM FLD (BED)

RNP APCH - GPS.

**⚠** Rwy 23 helicopter visibility reduction below 3/4 SM NA.

MISSED APPROACH: Climb to 3000 direct CACVA and on track 211° to WHYBE and hold.

ATIS	BOSTON APP CON	HANSCOM TOWER ★	GND CON	CLNC DEL	UNICOM
<b>124.6</b>	<b>124.4 279.6</b>	<b>118.5 (CTAF) 257.2</b>	<b>121.7</b>	<b>121.85</b>	<b>122.95</b>



3000	CACVA	tr 211°	WHYBE	VGSI and descent angles not coincident (VGSI Angle 3.20/TCH 55).	4 NM Holding Pattern
↑	✧		△		

ELEV	132	<b>D</b>	TDZE	128
------	-----	----------	------	-----

MIRL Rwy 5-23  
 HIRL Rwy 11-29  
 REIL Rws 5 and 23

NE-1, 22 FEB 2024 to 21 MAR 2024

NE-1, 22 FEB 2024 to 21 MAR 2024