

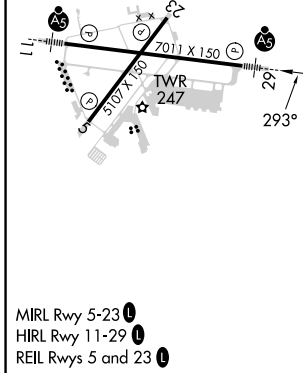
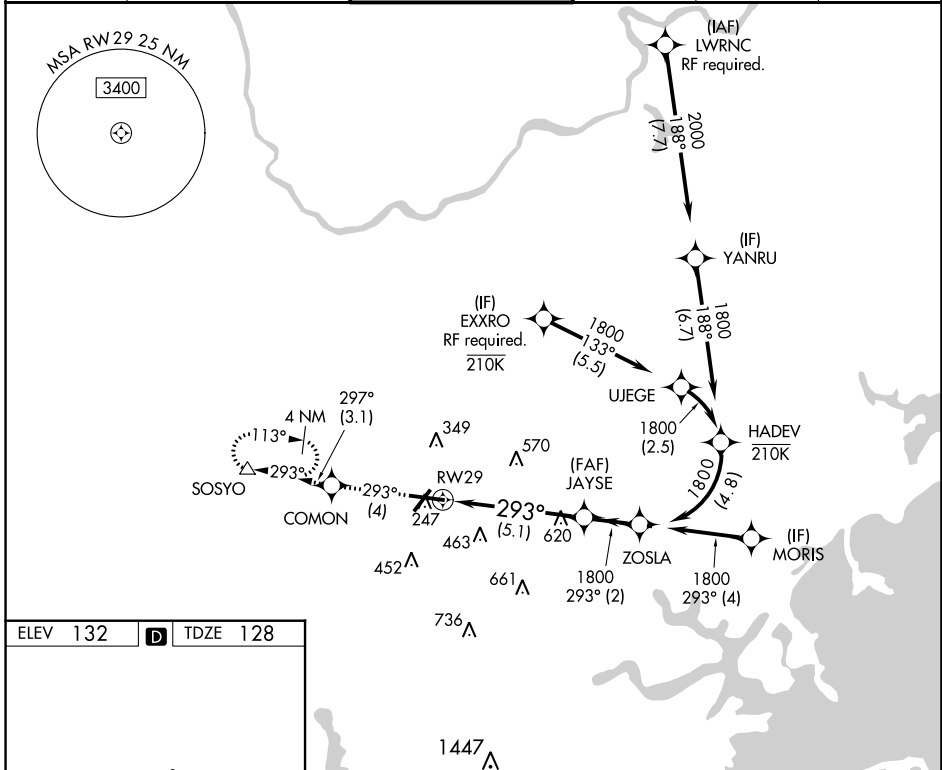
APP CRS	Rwy Idg	<b>7011</b>
<b>293°</b>	TDZE	<b>128</b>
	Apt Elev	<b>132</b>

# RNAV (RNP) Y RWY 29

LAURENCE G HANSCOM FLD (BED)

RNP AR APCH.		MALSR	MISSED APPROACH: Climb to 2000 on track 293° to COMON then on track 297° to SOSYO and hold.		
For uncompensated Baro-VNAV systems, procedure NA below -19°C or above 54°C.					

ATIS	BOSTON APP CON	HANSCOM TOWER*	GND CON	CLNC DEL	UNICOM
<b>124.6</b>	<b>124.4 279.6</b>	<b>118.5 (CTAF) 0 257.2</b>	<b>121.7</b>	<b>121.85</b>	<b>122.95</b>



ELEV 132	<b>D</b>	TDZE 128				
2000	↑	fr 293°	COMON	fr 297°	SOSYO	See planview for multiple IF locations.
			JAYSE	ZOSLA		
			1800	293°	1800	
			RW29	1800		GP 3.00° TCH 55
			-5.1 NM		-2 NM	
CATEGORY	A		B		C	
RNP 0.30 DA	651-1		523 (600-1)			
<b>AUTHORIZATION REQUIRED</b>						

NE-1, 22 FEB 2024 to 21 MAR 2024

NE-1, 22 FEB 2024 to 21 MAR 2024