

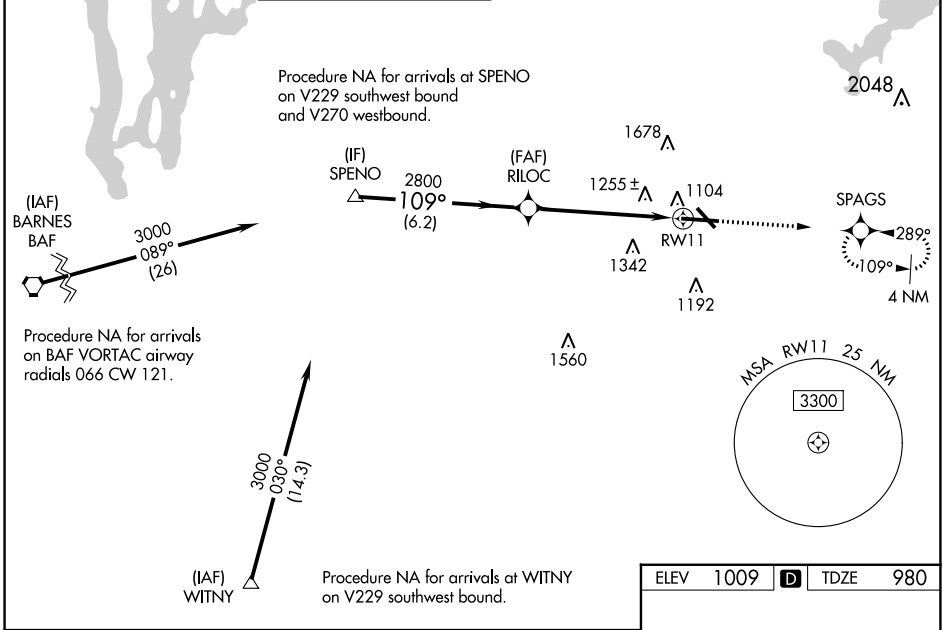
WAAS CH 77999 W11A	APP CRS 109°	Rwy Idg TDZE Apt Elev	7001 980 1009
--	------------------------	-----------------------------	--

RNAV (GPS) RWY 11

WORCESTER RGNL (OR.H)

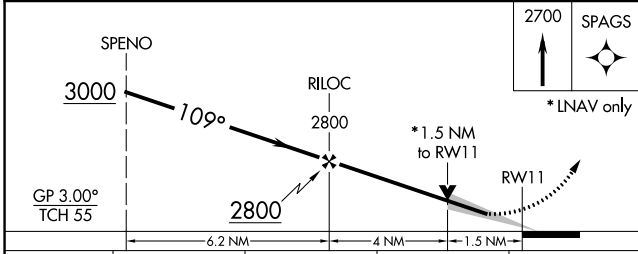
<p>For uncompensated Baro-VNAV systems, LNAV/VNAV NA below -20°C (-4°F) or above 54°C (130°F). DME/DME RNP-0.3 NA. Inop table does not apply to LPV all Cats. Inop table does not apply to LNAV Cats A/B.</p>	ALSF-2 	MISSED APPROACH: Climb to 2700 direct SPAGS and hold.

ATIS 126.55	BRADLEY APP CON 119.0 327.1	WORCESTER TOWER ★ 120.5 (CTAF) 263.0	GND CON 123.85	CLNC DEL 128.65	CLNC DEL 119.0 (When twr closed)	UNICOM 122.95
-----------------------	---------------------------------------	--	--------------------------	---------------------------	---	-------------------------



NE-1, 22 FEB 2024 to 21 MAR 2024

NE-1, 22 FEB 2024 to 21 MAR 2024



ELEV	1009	TDZE	980
------	------	------	-----

109°

5000 X 100'

7001 X 150'

1077

29

TWR 1100

TDZ/CL Rwy 11
REIL Rwys 15, 29, and 33
HIRL Rwy 11-29
MIRL Rwy 15-33

CATEGORY	A	B	C	D
LPV DA		1180/40	200 (200-¾)	
LNAV/VNAV DA		1565-1½	585 (600-1½)	
LNAV MDA	1520/40	540 (600-¾)	1520/55	540 (600-1)
CIRCLING	1560-1 551 (600-1)	1720-1 711 (800-1)	2000-3	991 (1000-3)