

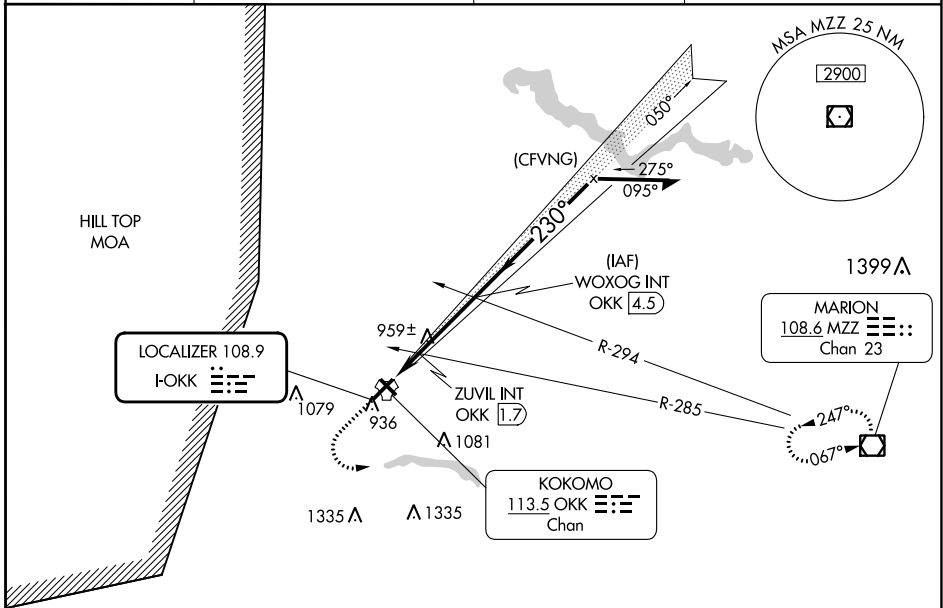
LOC I-OKK <b>108.9</b>	APP CRS <b>230°</b>	Rwy ldg TDZE Apt Elev	<b>6001</b> <b>827</b> <b>832</b>
---------------------------	------------------------	-----------------------------	---

# ILS or LOC RWY 23

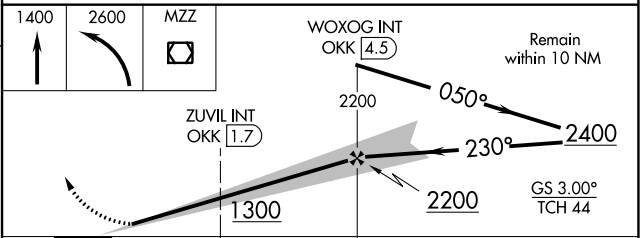
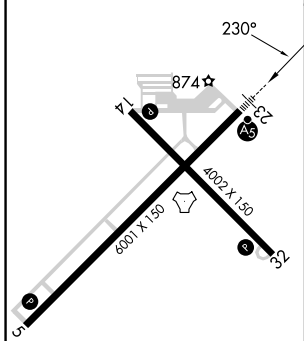
KOKOMO MUNI (OKK)

RADAR required for procedure entry.		MALSR 	MISSED APPROACH: Climb to 1400 then climbing left turn to 2600 direct MZZ VOR/DME and hold.
▽ NA For inop ALS, increase S-LOC 23 Cat C/D visibility to 1½ SM. * DME from OKK			

AWOS-3PT <b>128.675</b>	GRISSEM APP CON* <b>121.05 338.275</b>	CLNC DEL <b>120.0</b>	UNICOM <b>123.0 (CTAF) 0</b>
----------------------------	---	--------------------------	---------------------------------



ELEV 832	TDZE 827
----------	----------



CATEGORY	A	B	C	D
S-ILS 23	1027-½ 200 (200-½)			
S-LOC 23	1300-½	473 (500-½)	1300-1	473 (500-1)
<b>C</b> CIRCLING	1300-1	468 (500-1)	1400-1½ 568 (600-1½)	1420-2 588 (600-2)
ZUVIL FIX MINIMUMS* (DUAL VOR RECEIVERS or DME REQUIRED)				
S-LOC 23	1220-½	393 (400-½)	1220-¾	393 (400-¾)
<b>C</b> CIRCLING	1260-1 428 (500-1)	1300-1 468 (500-1)	1400-1½ 568 (600-1½)	1420-2 588 (600-2)

HIRL Rwy 5-23 0  
MIRL Rwy 14-32 0  
REIL Rws 5, 14, and 32 0

FAF to MAP 4.2 NM

Knots	60	90	120	150	180
Min:Sec	4:12	2:48	2:06	1:41	1:24

EC-2, 22 FEB 2024 to 21 MAR 2024

EC-2, 22 FEB 2024 to 21 MAR 2024