

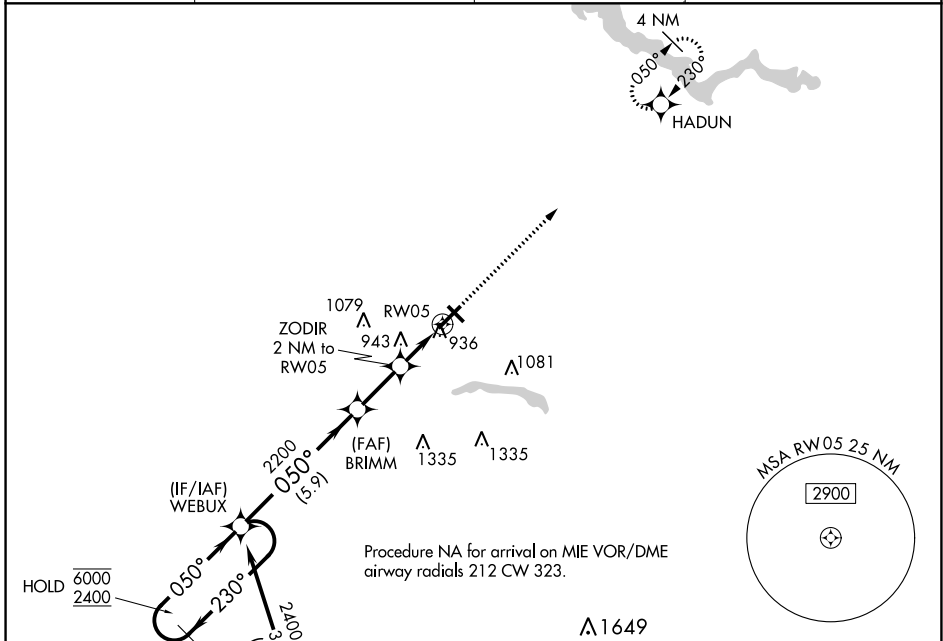
WAAS CH 78139 W05A	APP CRS 050°	Rwy Idg TDZE 832 Apt Elev 832	6001
--	------------------------	---	-------------

RNAV (GPS) RWY 5

KOKOMO MUNI (OKK)

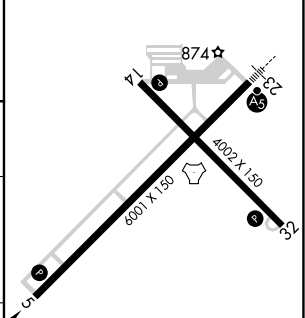
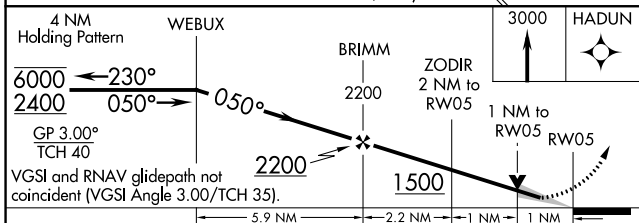
RNP APCH - GPS.	MISSED APPROACH: Climb to 3000 direct HADUN and hold.
▼ For uncompensated Baro-VNAV systems, LNAV/VNAV NA below -16°C or above 54°C.	

AWOS-3PT 128.675	GRISSOM APP CON* 121.05 338.275	CLNC DEL 120.0	UNICOM 123.0 (CTAF) 0
----------------------------	---	--------------------------	---------------------------------



Procedure NA for arrival on MIE VOR/DME airway radials 212 CW 323.

ELEV 832	TDZE 832
----------	----------



CATEGORY	A	B	C	D
LPV DA		1082-3/4	250 (300-3/4)	
LNAV/VNAV DA		1102-7/8	270 (300-7/8)	
LNAV MDA		1200-1	368 (400-1)	
CIRCLING	1260-1	1300-1	1400-1 1/2	1420-2
	428 (500-1)	468 (500-1)	568 (600-1 1/2)	588 (600-2)

HIRL Rwy 5-23 0
MIRL Rwy 14-32 0
REIL Rwy 5, 14 and 32 0

EC-2, 22 FEB 2024 to 21 MAR 2024

EC-2, 22 FEB 2024 to 21 MAR 2024