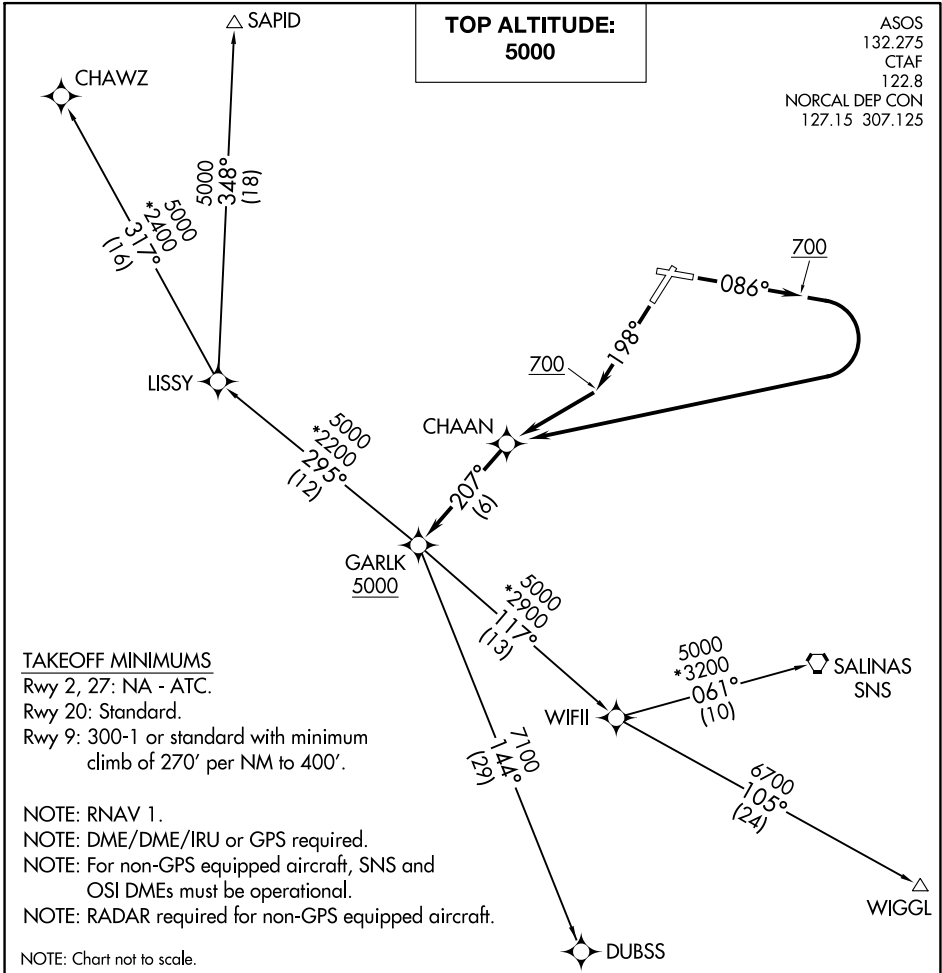


(GARLK1.GARLK) 18256

# GARLK ONE DEPARTURE (RNAV)

AL-805 (FAA)

WATSONVILLE MUNI (WVI)  
WATSONVILLE, CALIFORNIA



SW-2, 22 FEB 2024 to 21 MAR 2024

SW-2, 22 FEB 2024 to 21 MAR 2024

**DEPARTURE ROUTE DESCRIPTION**

TAKEOFF RUNWAY 9: Climb heading 086° to 700, then right turn direct CHAAN, thence. . . .

TAKEOFF RUNWAY 20: Climb heading 198° to 700, then direct CHAAN, thence. . . .

. . . . on track 207° to cross GARLK at or above 5000, then on (transition).

CHAWZ TRANSITION (GARLK1.CHAWZ)  
DUBSS TRANSITION (GARLK1.DUBSS)  
SALINAS TRANSITION (GARLK1.SNS)  
SAPID TRANSITION (GARLK1.SAPID)  
WIGGL TRANSITION (GARLK1.WIGGL)

# GARLK ONE DEPARTURE (RNAV)

(GARLK1.GARLK) 13SEP18

WATSONVILLE, CALIFORNIA  
WATSONVILLE MUNI (WVI)