

WAAS CH <b>58229</b> <b>W23A</b>	APP CRS <b>232°</b>	Rwy Idg TDZE Apt Elev	<b>3994</b> <b>770</b> <b>790</b>
--	------------------------	-----------------------------	---

# RNAV (GPS) RWY 23

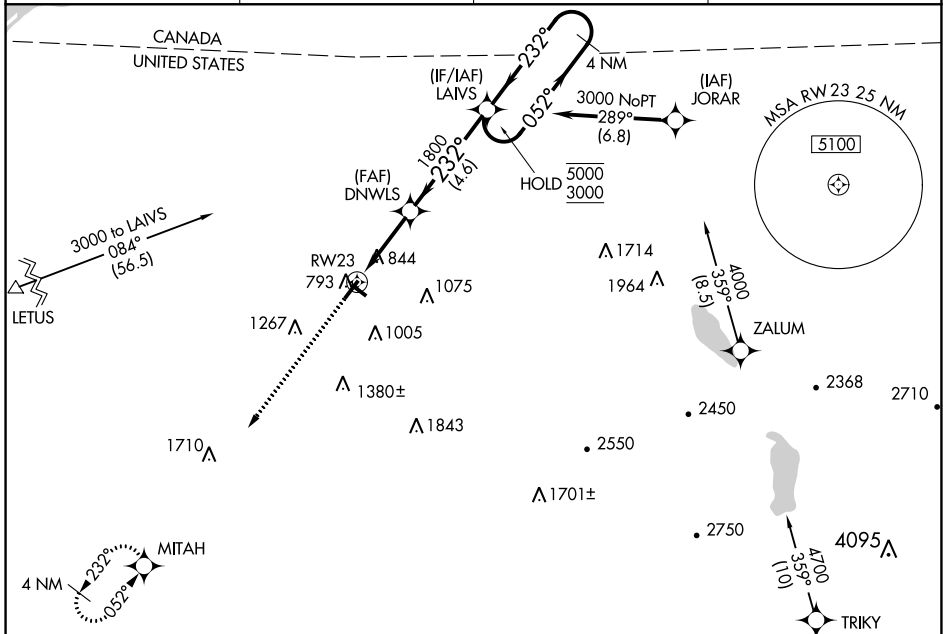
MALONE-DUFORT (MAL)

RNP APCH - GPS.

**NA** Circling Rwy 5 NA at night. Baro-VNAV NA. Use Massena Intl-Richards Fld altimeter setting; when not received, use Adirondack Rgnl altimeter setting and increase LPV DA to 1208 feet; increase LNAV/VNAV DA to 1316 feet; increase all MDAs 60 feet. Increase LPV all Cats visibility  $\frac{1}{8}$  SM, LNAV/VNAV all Cats  $\frac{1}{4}$  SM, LNAV Cat C  $\frac{1}{8}$  SM and Circling Cat C visibility  $\frac{1}{4}$  SM.

MISSED APPROACH: Climb to 3600 direct MITAH and hold.

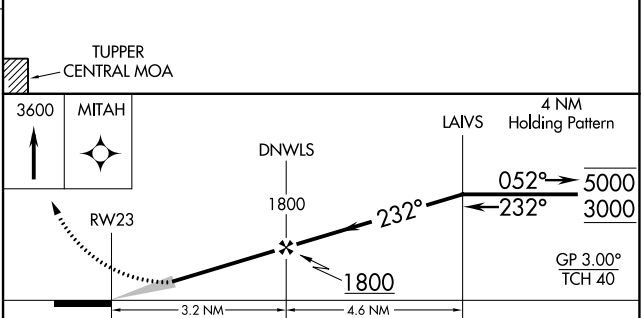
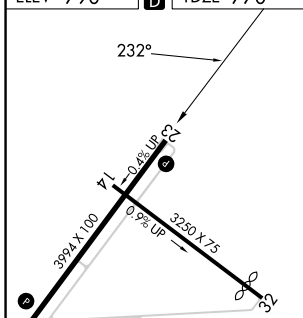
AWOS-AV <b>122.8</b>	MSS ASOS <b>128.075</b>	BOSTON CENTER <b>135.25 377.1</b>	UNICOM <b>122.8 (CTAF)</b>
-------------------------	----------------------------	--------------------------------------	-------------------------------



NE-2, 22 FEB 2024 to 21 MAR 2024

NE-2, 22 FEB 2024 to 21 MAR 2024

ELEV 790	<b>D</b>	TDZE 770
----------	----------	----------



CATEGORY	A	B	C	D
LPV DA	1155 - $1\frac{1}{8}$	385 (400 - $1\frac{1}{8}$ )		NA
LNAV/VNAV DA	1263 - $1\frac{3}{8}$	493 (500 - $1\frac{3}{8}$ )		NA
LNAV MDA	1240-1	470 (500-1)	1240 - $1\frac{3}{8}$ 470 (500 - $1\frac{3}{8}$ )	NA
<b>C</b> CIRCLING	1460-1 670 (700-1)	1520-1 730 (800-1)	1720 - $2\frac{3}{4}$ 930 (1000 - $2\frac{3}{4}$ )	NA