

WAAS CH 78029 W18A	APP CRS 185°	Rwy Idg TDZE Apt Elev	5264 777 777
--	------------------------	-----------------------------	---

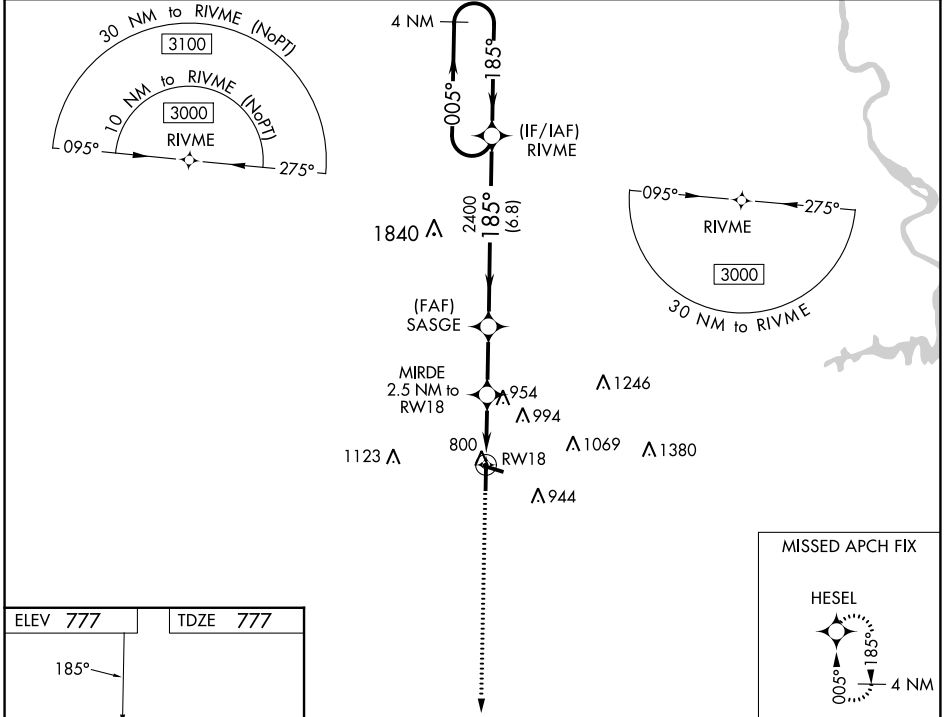
RNAV (GPS) RWY 18

AUBURN UNIVERSITY RGNL (AUO)

▼ For uncompensated Baro-VNAV systems, LNAV/VNAV NA below -16°C (4°F) or above 54°C (130°F).
▲ Baro-VNAV and VDP NA when using Columbus altimeter setting. DME/DME RNP-0.3 NA. Rwy 18 helicopter visibility reduction below 3/4 SM not authorized. When local altimeter setting not received, use Columbus altimeter setting: increase LPV DA to 1140 feet and visibility all Cats 1/2 SM; increase LNAV/VNAV DA to 1164 feet and visibility all Cats 3/8 SM; increase all MDA 120 feet and LNAV Cats C/D visibility 3/8 SM, Circling Cat C visibility 1/4 SM, and circling Cat D visibility 1/2 SM.

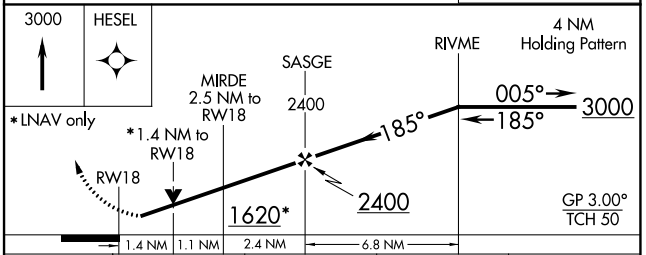
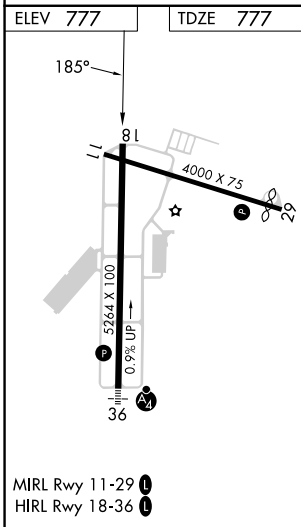
MISSED APPROACH:
Climb to 3000 direct HESEL and hold.

AWOS-3PT 132.575	ATLANTA APP CON * 125.5 323.1	CLNC DEL 118.7	UNICOM 123.0 (CTAF) 0
----------------------------	---	--------------------------	---------------------------------



SE-4, 22 FEB 2024 to 21 MAR 2024

SE-4, 22 FEB 2024 to 21 MAR 2024



CATEGORY	A	B	C	D
LPV DA	1027-3/4 250 (300-3/4)			
LNAV/VNAV DA	1051-7/8 274 (300-7/8)			
LNAV MDA	1260-1	483 (500-1)	1260-1 3/8	483 (500-1 3/8)
C CIRCLING	1280-1 503 (600-1)	1360-1 583 (600-1)	1380-1 3/4 603 (700-1 3/4)	1480-2 1/4 703 (800-2 1/4)