

WAAS CH 50312 W35A	APP CRS 347°	Rwy ldg 5002 TDZE 295 Apt Elev 295
--	------------------------	---

RNAV (GPS) RWY 35

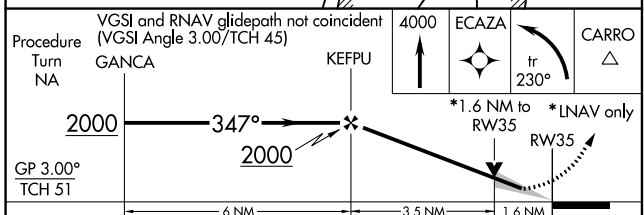
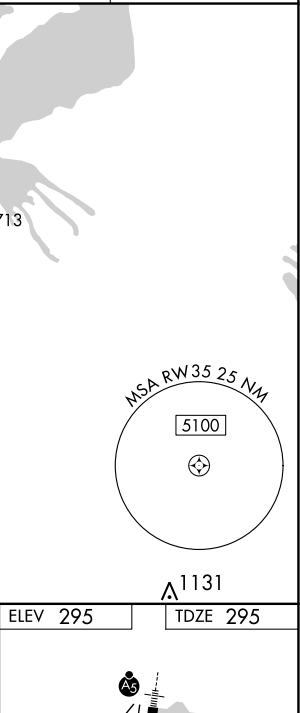
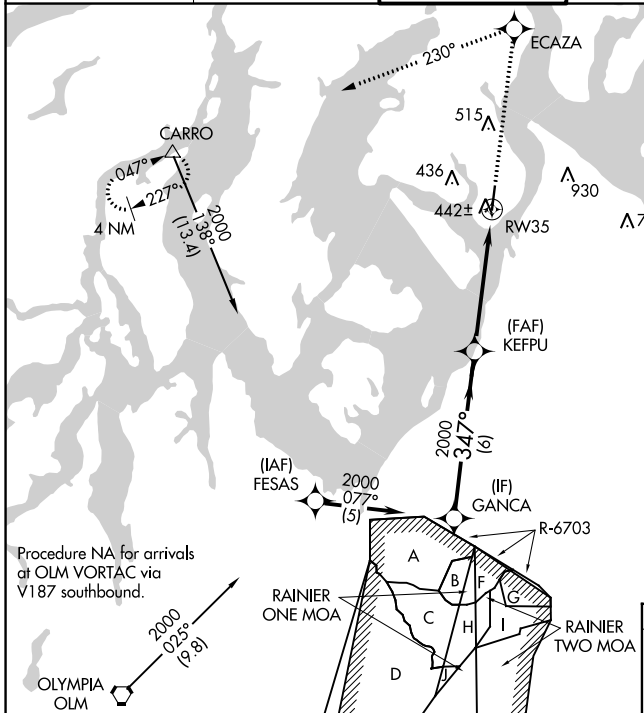
TACOMA NARROWS (TIW)

RNP APCH.

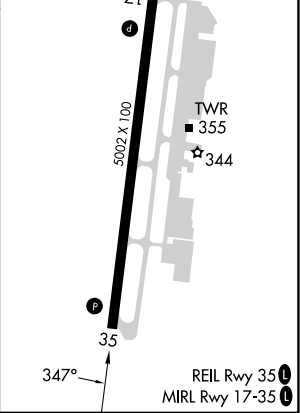
▼ Baro-VNAV NA when using McChord Fld altimeter setting. For uncompensated Baro-VNAV systems, LNAV/VNAV NA below -15°C (5°F) or above 48°C (118°F). Circling NA east of Rwy 17-35. When local altimeter setting not received, use McChord Fld altimeter setting and increase all DA 25 feet and all MDA 40 feet.

MISSED APPROACH: Climb to 4000 direct ECAZA and left turn via 230° track to CARRO and hold, continue climb-in-hold to 4000.

ATIS 124.05	SEATTLE APP CON 120.1 290.9	TACOMA TOWER ★ 118.5 (CTAF) 0 253.5	GND CON 121.8	UNICOM 122.95
-----------------------	---------------------------------------	---	-------------------------	-------------------------



Procedure Turn NA	GP 3.00° TCH 51	6 NM	3.5 NM	1.6 NM
CATEGORY	A	B	C	D
LPV DA	561-7/8		266 (300-7/8)	
LNAV/VNAV DA	769-1 3/4		474 (500-1 3/4)	
LNAV MDA	840-1	545 (600-1)	840-1 1/2 545 (600-1 1/2)	840-1 3/4 545 (600-1 3/4)
CIRCLING	980-1	685 (700-1)	980-2 685 (700-2)	980-2 1/4 685 (700-2 1/4)



NW-1, 22 FEB 2024 to 21 MAR 2024

NW-1, 22 FEB 2024 to 21 MAR 2024